

Regional Conservation Authority

**RESCIND AUTHORIZATION TO PURCHASE AN APPROXIMATELY
70-ACRE PROPERTY FROM THE COUNTY OF RIVERSIDE**

Staff Contact:

Brian Beck
Land Acquisition Analyst
(951) 955-0039

Background:

On January 7, 2008, the Board of Directors of the Regional Conservation Authority (RCA) authorized the acquisition of approximately 70 acres from the County of Riverside, subject to receiving a donation of funds from SMR Ventures to pay for the property. The County has informed RCA staff that it has elected to sell the property to the Redevelopment Agency for the County of Riverside. On January 29, 2008, the Board of Supervisors approved a Notice of Intent to sell the subject property to the Redevelopment Agency and a second item to subsequently sell the property to TSG Investors. As a condition of approval for the Spring Mountain Ranch Specific Plan, the 70 acres will be conveyed to the RCA, or another agency acceptable to the RCA, for habitat conservation. Staff recommends that the Board of Directors rescind its prior authorization to purchase the 70 acres from the County.

Staff Recommendation:

That the RCA Board of Directors rescind its authorization to purchase approximately 70 acres from the County of Riverside, as shown on the attached exhibit.

Attachment:

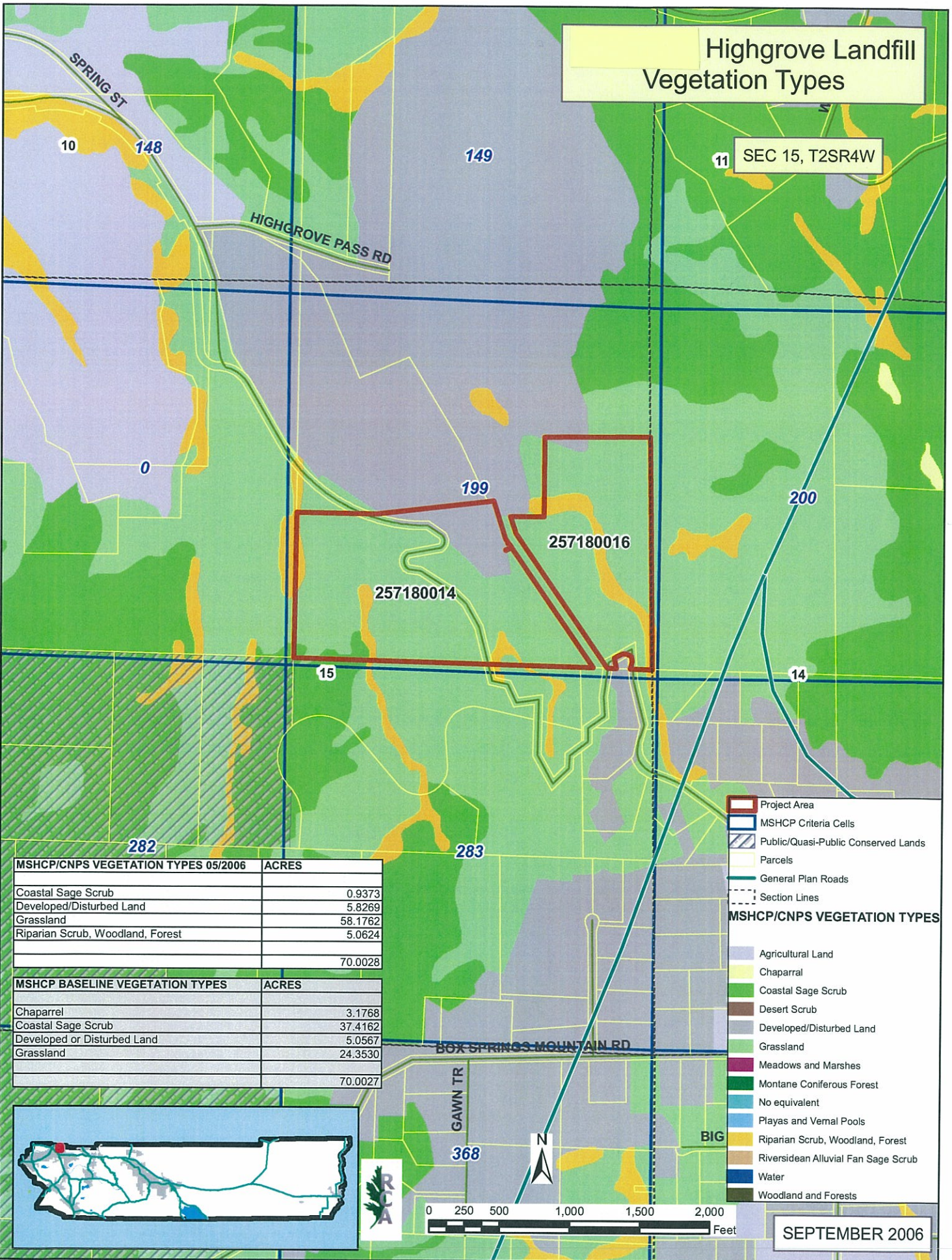
Property Detail Map

AGENDA ITEM NO. 7.5

Attachment No. 1 Property Detail Map

Highgrove Landfill Vegetation Types

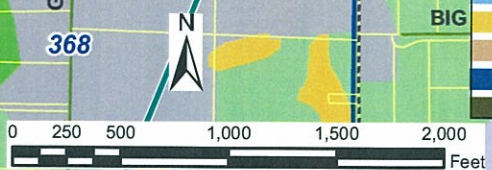
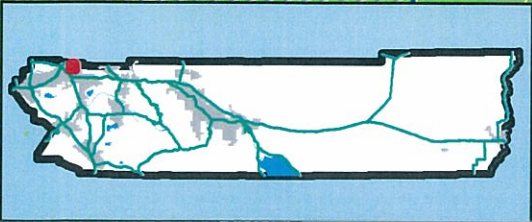
11 SEC 15, T2SR4W



MSHCP/CNPS VEGETATION TYPES 05/2006	ACRES
Coastal Sage Scrub	0.9373
Developed/Disturbed Land	5.8269
Grassland	58.1762
Riparian Scrub, Woodland, Forest	5.0624
	70.0028

MSHCP BASELINE VEGETATION TYPES	ACRES
Chaparral	3.1768
Coastal Sage Scrub	37.4162
Developed or Disturbed Land	5.0567
Grassland	24.3530
	70.0027

- Project Area
 - MSHCP Criteria Cells
 - Public/Quasi-Public Conserved Lands
 - Parcels
 - General Plan Roads
 - Section Lines
- MSHCP/CNPS VEGETATION TYPES**
- Agricultural Land
 - Chaparral
 - Coastal Sage Scrub
 - Desert Scrub
 - Developed/Disturbed Land
 - Grassland
 - Meadows and Marshes
 - Montane Coniferous Forest
 - No equivalent
 - Playas and Vernal Pools
 - Riparian Scrub, Woodland, Forest
 - Riversidean Alluvial Fan Sage Scrub
 - Water
 - Woodland and Forests



SEPTEMBER 2006