

**INITIAL MANAGEMENT EVALUATION & RECOMMENDATIONS REPORT
(IMER)**

For

ALLEN PROPERTY



**Prepared by
Natural Resources Management Section
Riverside County Parks**

April, 2007

**Riverside County
Multi-Species Habitat Conservation Plan
Initial Management Evaluation and Recommendations
Habitat Management Unit: Menifee**

RESERVE NAME: MEN2
ACQUISITION NAME: ALLEN
PROJECT ID NUMBER: RC22000011

I. SITE PHYSICAL DESCRIPTION

1.A. Site Physical Location & Access:

The Allen property is located north of Skipper Road, east of Los Alamos Road south of Mason Avenue and west of Kiwebre Road. The site is located within the City of Murrieta. The site is located along a ridge line and southern slope of a mountain and is not accessible by vehicle. Access to the site must be done afoot. The site is square in shape and is composed of one 9.66-acre parcel. The approximate center of the site is located at:

State Plane Coordinates: 6284670E, 2155384N (NAD-83, feet)

UTM Coordinates: 485200E, 3715454N (NAD-27, meters)

Township / Range / Section: T7S, R3W, S11, Murrieta Quad

1.B. APNs & Acreage:

APN	ACRES
900-060-017	9.66
TOTAL	9.66

1.C. Topography:

The majority of the property is densely vegetated, steeply sloped and ridged. The property currently sits along a ridge and a south facing slope. Four tributaries to Warm Springs Creek exist within the property boundary. Given the dense vegetation, location and topography of the site, the area is very difficult to access.

1.D. Surrounding Land Use:

The immediate area (<2,500 foot-radius) of the site is surrounded by open space (non-developed) land. Low-density housing exists in the northern and southern

areas near the site with many of the residences participating in equestrian activities. In the greater area (>2500 foot-radius) extensive development can be found. The majority of this is medium-density residential housing. The area to the northeast of the site is currently non-developed. Given the topography of the site, no off-highway vehicle (OHV) activity was noticed within the property boundary; however, OHV activities are common in the area.

2. BIOLOGICAL ASSESSMENT

2.A. Plant Communities:

The site is located in an area that has not experienced a recent wildfire. As a result, the majority of the site supports very dense chaparral. Given the slope of the area the plant density towards the northern section of the property is not as dense as the southern section. Common plants noted were chamise (*Adenostoma fasciculatum*) and California buckwheat (*Eriogonum fasciculatum*).

2.B. Likely Animal Species:

Animals likely to be found on the site could include the California ground squirrel (*Spermophilus beecheyi*), bobcat (*Lynx rufus*), coyote (*Canis latrans*), mule deer (*Odocoileus hemionus*), coastal California gnatcatcher (*Polioptila californica californica*), American crow (*Corvus brachyrhynchos*), red-tailed hawk (*Buteo jamaicensis*), white-tailed kite (*Elanus leucurus*), Bell's sage sparrow (*Amphispiza belli belli*), Rufous-crowned sparrow (*Aimophila ruficeps canescens*), southern Pacific rattlesnake (*Crotalus viridis*), Baja California lyresnake (*Trimorphodon biscutatus lyrophanes*), western whiptail (*Cnemidophorus tigris*), side-blotched lizard (*Uta stansburiana*), Quino checkerspot butterfly (*Euphydryas editha quino*).

2.C. Other Habitat or Wildlife Features:

The Allen property is located near a larger wildlife matrix with the Multiple Species Reserve located 6.22 miles to the northeast. The Multiple Species Reserve establishes a corridor between Lake Skinner Reservoir and Diamond Valley Lake (Existing Core J). The Allen property will help establish Proposed Core Area 2, which will eventually become connected to Existing Core J through Proposed Linkage 17. The Warm Springs Preserve, managed by the Center for Natural Lands Management (CNLM), borders the Allen property to the east. Mountain Lion (*Puma concolor*), southwestern pond turtle (*Actinemys marmorata pallida*), Cooper's hawk (*Accipiter cooperii*) and loggerhead shrike (*Lanius ludovicianus gambeli*) have been documented to occur within the Warm Springs Preserve. Some well-developed riparian habitat can be found on the CNLM property, and although such habitat is lacking from the Allen property, there is a possibility that some of the species associated with riparian areas might forage on this site.

2.D. Target Species:

Please see Attachment A for a qualitative checklist of MSHCP target animal species, and Attachment B for plant species.

3. IMPACTS AND CURRENT CONDITIONS**3.A. Current Uses:**

The site is currently not being used by humans, most likely due to the topography and dense vegetation of the site.

3.B. Fencing & Access Controls:

Fencing along the majority of the perimeter is unnecessary due to its steepness and lack of easy access. The only access points that potentially may cause concern can be found along parts of the eastern and southern borders. These specific areas will need to be addressed if access through the site becomes detrimental.

3.C. Off-Road Vehicle (OHV) Use / Damage:

No signs of OHV activities were noticed within the property boundary.

3.D. Illegal Dumping:

Given the topography and location of the site, the site is currently not easily accessible for illegal dumping.

3.E. Target Shooting & Hunting

The site is currently not being used for target shooting or hunting.

3.F. Weed Abatement::

No weed abatement activities are currently required on this site. Future concerns can be expected near the northwest corner of the site. This particular area borders a small ranchette style house which may need weeding when fuel loads become high.

3.G. Other Recreational Opportunities and Constraints:

With proper management and funding, opportunities could exist in the future for hiking, nature study, aesthetics and solitude.

3.H. Special Conditions of Purchase:

None Reported.

4. RESTORATION OPPORTUNITIES

4.A. Target Species:

California gnatcatcher and Quino checkerspot butterfly have been documented to occur within the immediate vicinity.

4.B. Multi-Species Aspects:

The multiple species importance of this site primarily lies in it serving as a component of the movement corridor/foraging habitat between the site and the Multiple-Species Reserve to the northeast.

5. RERSERVE DESIGN AND CONNECTIVITY

5.A. Boundary, Edge and Community Location:

Due to its relatively small size and square shape, the site supports a low degree of edge. The boundary of the site is completely surrounded by open-space except for a small section in the northwest which is adjacent to a small ranchette.

5.B. Connectivity:

This site forms a small piece in establishing the continuity of open-space near the Warm Springs Creek corridor and serves as a key parcel in the establishment of MSHCP Proposed Core Area 2. Making the area continuous will also aid in developing a corridor between the site and the Multiple-Species Reserve. Human development will be a major factor that will prevent this connection.

5.C. Nearby Existing Reserves:

Recently acquired open-space land is the Hall Reserve, which is located approximately 700 feet to the northeast. Open-space land between the Allen and Hall reserves has been acquired by the CNLM.

5.D. Priority for Future Purchases:

Priority should be given to acquire open-space land that exists between the Multiple-Species Reserve and the Allen property. This would ensure the continuity of open-space within the Warm Springs Creek corridor. Further priority should be given to parcels that are planned to be developed soon, because the corridor between the Warm Springs Preserve and the Multiple Species Reserve is rapidly getting narrower due to development.

6. INTERIM MANAGEMENT**6.A. Public Issues:**

No public issues are foreseen.

6.B. Biological Issues:

Maintaining species composition is the biggest biological issue on the Allen site. Protecting the sage scrub and chaparral plant communities, on or near the site, will be most beneficial. The majority of the issues will be adequately addressed by limiting access to the site.

6.C. Recommended Interim Management Scenario:

- 1) Periodically monitor and inspect the site for possible new OHV trails and determine if the frequency of visitors is increasing or remaining the same by documenting any new disturbances to the land (e.g. new OHV trails, trash, shotgun shells etc.).
- 2) Post low-key signs that identify County ownership and site restrictions.

7. MAPS – Attachment C.**8. SITE PHOTOGRAPHS – Attachment D.**

COMMON NAME	SCIENTIFIC NAME	HABITAT	NOT PRESENT	NOT LIKELY PRESENT	POSSIBLY PRESENT	LIKELY PRESENT	CONFIRMED PRESENT
INVERTEBRATES							
RIVERSIDE FAIRY SHRIMP	<i>Streptocephalus woottoni</i>	Vernal Pool	✓				
SANTA ROSA PLATEAU FAIRY SHRIMP	<i>Linderiella santarosae</i>	Vernal Pool	✓				
VERNAL POOL FAIRY SHRIMP	<i>Branchinecta lynchi</i>	Vernal Pool	✓				
INSECTS							
QUINO CHECKERSPOT BUTTERFLY	<i>Euphydryas editha quino</i>	Sage Scrub				✓	
DELHI SANDS FLOWER-LOVING FLY	<i>Rhaphiomidas terminus abdominalis</i>	Delhi Sands	✓				
FISH							
ARROYO CHUB	<i>Gila orcuttii</i>	Aquatic	✓				
SANTA ANA SUCKER	<i>Catostomus santaanae</i>	Aquatic	✓				
AMPHIBIANS							
COAST RANGE NEWT	<i>Taricha torosa tarosa</i>	Riparian / Intermittant Streams		✓			
ARROYO TOAD	<i>Bufo californicus</i>	Riparian / Well-watered Streams		✓			
WESTERN SPADEFOOT TOAD	<i>Scaphiopus hammondi</i>	Temp. Pools / Surrounding Uplands		✓			
CALIFORNIA RED-LEGGED FROG	<i>Rana aurora draytonii</i>	Permanent Streams and Rivers		✓			
MOUNTAIN YELLOW-LEGGED FROG	<i>Rana mucosa</i>	Mountain Streams / Rivers / Lakes	✓				
REPTILES							
WESTERN POND TURTLE	<i>Clemmys marmorata pallida</i>	Aquatic		✓			
SAN DIEGO COAST HORNED LIZARD	<i>Phrynosoma coronatum blainvillii</i>	Sage Scrub / Grasslands			✓		
SOUTHERN SAGEBRUSH LIZARD	<i>Sceloporus graciosus vandenburgianus</i>				✓		
GRANITE SPINY LIZARD	<i>Sceloporus orcuttii</i>	Sage Scrub with Rocks		✓			
GRANITE NIGHT LIZARD	<i>Xantusia henshawi henshawi</i>	Rocky sage scrub & chaparral		✓			
ORANGE-THROATED WHIPTAIL	<i>Cnemidophorus hyperythrus beldingii</i>	Sage Scrub			✓		
SAN DIEGO BANDED GECKO	<i>Coleonyx variegatus abbottii</i>	Sage Scrub / Chaparral			✓		
SAN BERNARDINO MOUNTAIN KINGSSNAKE	<i>Lampropeltis zonata parviruba</i>	Upper Elev. Chaparral & Mountains		✓			
SAN DIEGO MOUNTAIN KINGSSNAKE	<i>Lampropeltis zonata pulchra</i>	Upper Elev. Chaparral & Mountains		✓			
SOUTHERN RUBBER BOA	<i>Charina bottae umbratica</i>	Mountains	✓				
NORTHERN RED DIAMOND RATTLESNAKE	<i>Crotalus ruber ruber</i>	Sage Scrub / Chaparral			✓		
BIRDS							
DOUBLE-CRESTED CORMORANT	<i>Phalacrocorax auritus</i>	Aquatic	✓				
AMERICAN BITTERN	<i>Botaurus lentiginosus</i>	Marsh	✓				
GREAT BLUE HERON	<i>Ardea herodias</i>	Waterways & Surrounding Areas	✓				
BLACK-CROWNED NIGHT HERON	<i>Nycticorax nycticorax</i>	Waterways & Surrounding Areas	✓				
WHITE-FACED IBIS	<i>Plegadis chihi</i>	Waterways & Surrounding Areas	✓				
MOUNTAIN PLOVER	<i>Charadrius montanus</i>	Waterways & Surrounding Areas	✓				
TURKEY VULTURE	<i>Carthartes aura</i>	Cosmopolitan				✓	
GOLDEN EAGLE	<i>Aquila chrysaetos</i>	Cosmopolitan			✓		
BALD EAGLE	<i>Haliaeetus leucocephalus</i>	Lakes		✓			
WHITE-TAILED KITE	<i>Elanus leucurus</i>	Brushy Grassland			✓		✓
NORTHERN HARRIER	<i>Circus cyaneus</i>	Brushy Grassland			✓		
SHARP-SHINNED HAWK	<i>Accipiter striatus</i>	Woodlands & Surrounding Areas		✓			
COOPER'S HAWK	<i>Accipiter cooperii</i>	Woodlands & Surrounding Areas		✓			
NORTHERN GOSHAWK	<i>Accipiter gentilis</i>	Mountains	✓				
SWAINSON'S HAWK	<i>Buteo swainsoni</i>	Open Country		✓			
FERRUGINOUS HAWK	<i>Buteo regalis</i>	Open Country		✓			
OSPREY	<i>Pandion haliaetus</i>	Lakes	✓				
MERLIN	<i>Falco columbarius</i>	Open Woods & Surrounding Areas		✓			
PRAIRIE FALCON	<i>Falco mexicanus</i>	Open Country		✓			
PEREGRINE FALCON	<i>Falco peregrinus</i>	Open Country Near Wetlands			✓		
MOUNTAIN QUAIL	<i>Oreortyx pictus</i>	Mountains	✓				
WESTERN YELLOW-BILLED CUCKOO	<i>Coccyzus americanus occidentalis</i>	Riparian			✓		
CALIFORNIA SPOTTED OWL	<i>Stryx occidentalis occidentalis</i>	Mountains	✓				
BURROWING OWL	<i>Athene cunicularia hypugaea</i>	Open Country		✓			
BLACK SWIFT	<i>Cypseloides niger</i>	Cliffs Near Water		✓			
WILLIAMSON'S SAPSUCKER	<i>Sphyrapicus thyroideus</i>	Mountains	✓				

DOWNY WOODPECKER	<i>Picoides pubescens</i>	Areas With Trees	✓				
SOUTHWESTERN WILLOW FLYCATCHER	<i>Empidonax traillie extimus</i>	Riparian		✓			
CALIFORNIA HORNED LARK	<i>Eremophila alpestris acta</i>	Open Grasslands & Sage Scrub			✓		
TREE SWALLOW	<i>Tachycineta bicolor</i>	Wooded Areas Near Water		✓			
PURPLE MARTIN	<i>Progne subis</i>	Open Country		✓			
CACTUS WREN	<i>Campylorhynchus brunneicapillus</i>	Sage Scrub With Cactus		✓			
COASTAL CALIFORNIA GNATCATCHER	<i>Poliophtila californica californica</i>	Sage Scrub				✓	
LOGGERHEAD SHRIKE	<i>Lanius lucovicianus</i>	Cosmopolitan			✓		
LEAST BELL'S VIREO	<i>Vireo bellii pusillus</i>	Extensive Riparian		✓			
NASHVILLE WARBLER	<i>Vermivora ruficapilla</i>	Riparian		✓			
YELLOW WARBLER	<i>Dendroica petechia brewsteri</i>	Riparian		✓			
McGILLIVRAY'S WARBLER	<i>Oporomis tolmiei</i>	Riparian		✓			
WILSON'S WARBLER	<i>Wilsonia pusilla</i>	Riparian		✓			
YELLOW-BREASTED CHAT	<i>Icteria virens</i>	Riparian		✓			
GRASSHOPPER SPARROW	<i>Ammodramus savannarum</i>	Grasslands		✓			
BELL'S SAGE SPARROW	<i>Amphispiza bellii bellii</i>	Chaparral			✓		
SO. CAL. RUFOUS-CROWNED SPARROW	<i>Aimophila ruficeps canescens</i>	Sage Scrub / Chaparral Slopes			✓		
LINCOLN'S SPARROW	<i>Melospiza lincolni</i>	Mountain Bogs & Meadows		✓			
TRICOLORED BLACKBIRD	<i>Agelaius tricolor</i>	Marsh	✓				
MAMMALS							
BOBCAT	<i>Lynx rufus</i>	Cosmopolitan				✓	
MOUNTAIN LION	<i>Felis concolor</i>	Remote Mountainous Areas				✓	
LONG-TAILED WEASEL	<i>Mustela frenata</i>	Open Country		✓			
COYOTE	<i>Canis latrans</i>	Cosmopolitan					✓
BRUSH RABBIT	<i>Sylvilagus bachmani</i>	Chaparral				✓	
SAN DIEGO BLACK-TAILED JACKRABBIT	<i>Lepus californicus bennetii</i>	Open Country		✓			
LOS ANGELES POCKET MOUSE	<i>Perognathus longimembris breviansus</i>	Streambeds & Sandy Areas			✓		
NORTHWESTERN SAN DIEGO POCKET MOUSE	<i>Chaetodipus fallax fallax</i>	Sage Scrub / Chaparral			✓		
AGUNAGA KANGAROO RAT	<i>Dipodomys merriami collinus</i>	Sandy Areas Near Aguanga		✓			
SAN BERNARDINO KANGAROO RAT	<i>Dipodomys merriami parvus</i>	Sandy Areas / San Jacinto River		✓			
DELZURA KANGAROO RAT	<i>Dipodomys simulans</i>	Sage Scrub / Chaparral			✓		
STEPHENS' KANGAROO RAT	<i>Dipodomys stephensi</i>	Open Country			✓		
SAN DIEGO DESERT WOODRAT	<i>Neotoma lepida intermedia</i>	Sage Scrub / Chaparral				✓	
SAN BERNARDINO FLYING SQUIRREL	<i>Glaycomys sabrinus californicus</i>	Mountains	✓				

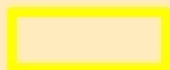
APPENDIX B.
Target Plant Species

COMMON NAME	SCIENTIFIC NAME	HABITAT(S)	GENERAL LOCATIONS	NOT PRESENT	NOT LIKELY PRESENT	POSSIBLY PRESENT	LIKELY PRESENT	CONFIRMED PRESENT
beautiful hulsea	<i>Hulsea vestita</i> var. <i>callicarpa</i>	Mid-level mountains	SJMTS	✓				
Brand's phacelia	<i>Phacelia stellaris</i>	Sandy benches	SARIV	✓				
California beardtongue	<i>Penstemon californicus</i>	Mid-level mountains	SJMTS, DVA, SRP		✓			
California bedstraw	<i>Galium californicum</i> var. <i>primum</i>	Upper elevation chaparral	SJMTS, DVA, San Timoteo			✓		
California black walnut	<i>Juglans californica</i> var. <i>californica</i>	Streams	SRP, Pedley		✓			
California muhly	<i>Muhlenbergia californica</i>	Riparian / seeps	Sage area, Prado area, GAV, TEM			✓		
California Orcutt grass	<i>Orcuttia californica</i>	Vernal pools	SALT, SRP, SKUNK		✓			
chickweed oxytheca	<i>Oxytheca caryophylloides</i>	Mountains	SJMTS		✓			
Cleveland's bush monkeyflower	<i>Mimulus cleveandii</i>	Upper elevation chaparral	SAMTS			✓		
cliff cinquefoil	<i>Potentilla rimicola</i>	High elevation rocks	SJMTS		✓			
Coulter's goldfields	<i>Lasthenia glabrata</i> var. <i>coulteri</i>	Alkali vernal plains	SJVAL, Perris Valley, Nichols Rd.		✓			
Coulter's matilija poppy	<i>Romneya coulteri</i>	Dry washes and canyons	GAV, TEM		✓			
Davidson's saltscare	<i>Atriplex sereana</i> var. <i>dauidsonii</i>	Alkali vernal plains and pools	SJVAL, Perris Valley, Nichols Rd.		✓			
Englemann oak	<i>Quercus engelmannii</i>	Mesic fans and slopes	SRP, SAMTS, GAV		✓			
Fish's mildwort	<i>Polygala cornuta</i> var. <i>fishiae</i>	Oak riparian woodlands	SRP, SAMTS, Temecula area		✓			
graceful tarplant	<i>Holcarpa virgata elongata</i>	Level grasslands and shrublands	SRP		✓			
Hall's monardella	<i>Monardella macrantha</i> var. <i>hallii</i>	Mountain foothills, dry slopes, ridges	SAMTS, Pine Cove area		✓			
Hammitt's clay-cress	<i>Sibaropsis hammittii</i>	Clay grasslands	SAMTS		✓			
heart-leaved pitcher plant	<i>Lepcehinia cardiophylla</i>	Forests	SAMTS		✓			
intermediate mariposa lily	<i>Calochortus weedii</i> var. <i>intermedius</i>	Dry rocky slopes in SS / CHAP, burned areas	SAMTS, DVA, VAIL			✓		
Jaegar's milk-vetch	<i>Astragalus pachypus</i> var. <i>jaegeri</i>	Dry areas	VAIL, Agunaga area, Proterero area			✓		
Johnston's rock cress	<i>Arabis johnstonii</i>	Upper elevation chaparral, forests	SJMTS			✓		
lemon lily	<i>Lilium parryi</i>	Mountain wet places	SJMTS		✓			
little mousetail	<i>Myosaurus minimum apus</i>	Vernal pools, alkali sinks	SALT, SRP, GAV, MARB		✓			
long-spined spine flower	<i>Chorizanthe polygonoides</i> var. <i>longispina</i>	Rocky clay soils	GAV, TEM, SAMTS, SRP		✓			
many-stemmed dudleya	<i>Dudleya multicaulis</i>	Rocky clay soils, outcrops	GAV, TEM		✓			
Mojave tarplant	<i>Deinandra</i> [Hemizonia] <i>mohavensis</i>	Clay or silty streams	SJMTS and foothills	✓				
mud nama	<i>Nama stenocarpum</i>	Marshes	SJRIV near Gilman	✓				
Munz's mariposa lily	<i>Calochortus palmeri</i> var. <i>munzii</i>	Mountains, chaparral	SJMTS			✓		
Munz's onion	<i>Allium munzii</i>	Clay soils in SS / CHAP / Grasslands	GAV, TEM, SAMTS, SKUNK, SKIN			✓		
Nevin'a barberry	<i>Berberis nevinii</i>	Course soils in chaparral	Varies			✓		
ocellated Humboldt lily	<i>Lilium humboldtii ocellatum</i>	Mountain riparian	SAMTS, Palomar Mts.	✓				
Orcutt's brodiaea	<i>Brodiaea orcuttii</i>	Mesic grasslands and pools	SRP		✓			
Palmer's grapplinghook	<i>Harpagonella palmeri</i>	Clay soils in SS / CHAP / Grasslands	varies			✓		
Palomar monkeyflower	<i>Mimulus diffusus</i>	Sandy soils in upper elev. CHAP, forests	SAMTS, SJMTS			✓		
Parish's brittlescale	<i>Atriplex parishii</i>	Alkaine soils	SALT, lower SJRIV		✓			
Parish's meadowfoam	<i>Limnanthes gracilis</i> var. <i>parishii</i>	Ephemeral wetlands	SRP	✓				
Parry's spine flower	<i>Chorizanthe parryi</i> var. <i>parryi</i>	Alluvial scrub	Varies		✓			
Payson'r jewelflower	<i>Caulanthus simulans</i>	Pinyon-Juniper, chaparral, sage scrub	Agunaga area			✓		
peninsular spine flower	<i>Chorizanthe leptotheca</i>	Dry open areas	Varies		✓			

APPENDIX B.
Target Plant Species

Plummer's mariposa lily	<i>Calochortus plummerae</i>	Varies	SJMTS, Jurupa Hills			✓		
prostrate navarretia	<i>Navarretia prostrata</i>	Sage scrub, vernal pools, grasslands	SRP			✓		
prostrate spine flower	<i>Chorizanthe procumbrens</i>	Sandy openings in CHAP / SS	SAMTS			✓		
Rainbow manzanita	<i>Arctostaphylos rainbowensis</i>	Iron rich soils in chaparral	SRP, GAV, TEM, Wildomar area			✓		
round-leaved filaree	<i>Erodium macrophyllum</i>	Grasslands	GAV, DVA, TEM		✓			
San Diego ambrosia	<i>Ambrosia pumila</i>	Grasslands	Alberhill, Lake Street, SKUNK		✓			
San Diego button-celery	<i>Eryngium aristulatum var. parishii</i>	Vernal pools	SRP		✓			
San Jacinto Mountains bedstraw	<i>Galium angustifolium jacinticum</i>	Forests	SJMTS		✓			
San Jacinto Valley crownscale	<i>Atriplex coronatum var. notator</i>	Floodplains	MYSTIC, SALT		✓			
San Miguel savory	<i>Satureja chandleri</i>	Varies	SRP		✓			
Santa Ana River woollystar	<i>Eriastrum densifolium sanctorum</i>	Alluvial scrub (immature)	SARIV		✓			
shaggy-haired alumroot	<i>Heuchera hirsutissima</i>	Forests	SJMTS		✓			
slender-horned spine flower	<i>Dodecahema leptoceras</i>	Alluvial scrub (mature)	Indian Creek, VAIL area		✓			
small-flowered microserius	<i>Microserius douglasii var. platycarpa</i>	Clay foothills and grasslands	SRP, Bachelor Mt. area		✓			
small-flowered morning-glory	<i>Convolvulus simulans</i>	Clay and serpentine soils in grasslands	Varies		✓			
smooth tarplant	<i>Centromadia pungens (Hemizonia pungens laevis)</i>	Varies	Varies			✓		
spreading navarretia	<i>Navarretia fossalis</i>	Vernal pools and ditches	SALT, SJRIV		✓			
sticky-leaved dudleya	<i>Dudleya viscida</i>	Rocky canyon slopes	SAMTS		✓			
thread-leaved brodiaea	<i>Brodiaea filifolia</i>	Alkali pools, mesic grasslands	SJRIV, SALT, SRP		✓			
Vail Lake ceanothus	<i>Ceanothus ophiochilus</i>	Dry ridgetops in chaparral	VAIL area			✓		
vernal barley	<i>Hordeum intercedens</i>	Vernal pools and mesic grasslands	SALT, SJRIV		✓			
Wright's trichocoronis	<i>Trichocoronis wrightii var. wrightii</i>	Alkali vernal pools and flats	SJRIV, MYSTIC		✓			
Yucaipa onion	<i>Allium marvinii</i>	Clay soils in chaparral	Beaumont area			✓		

**APPENDIX C. SITE MAP
ALLEN PROPERTY
RC22000011**



PROPERTY BOUNDARY

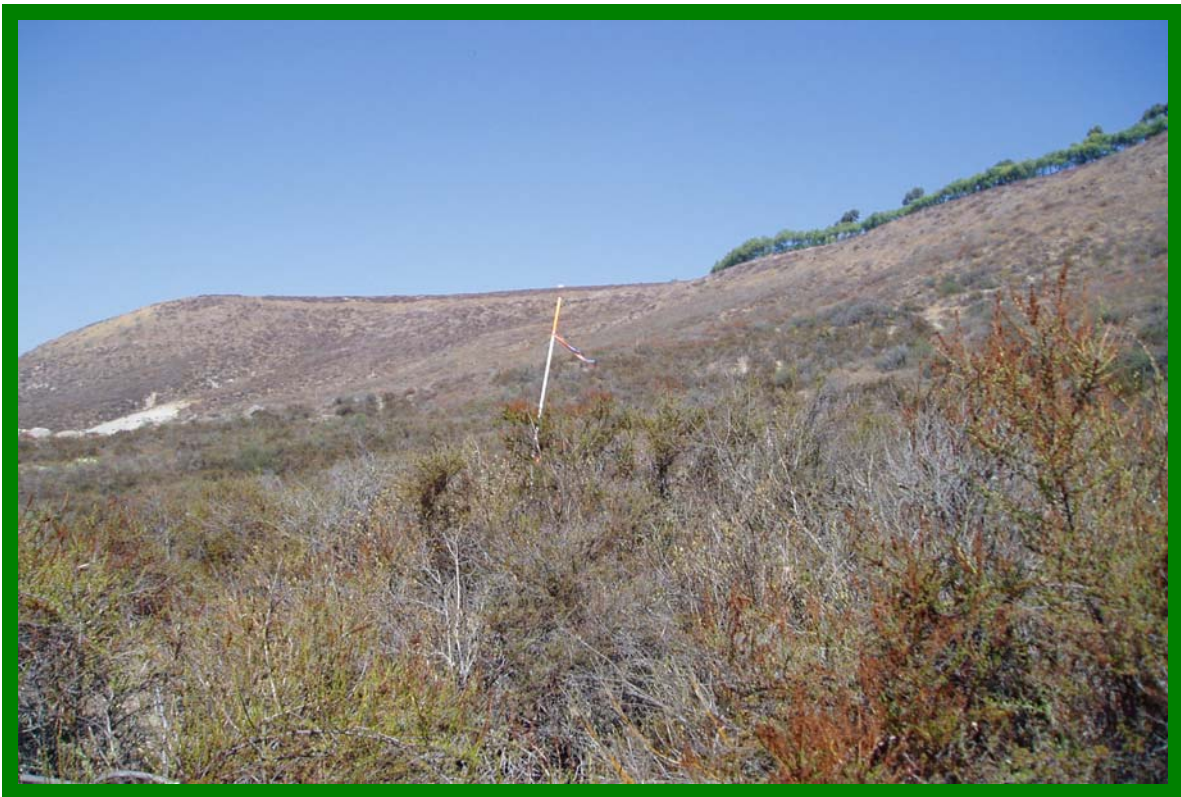


140 70 0 140 280 420 Feet





Southeast corner looking towards the northwest corner.



Southeast corner looking west.