

**INITIAL MANAGEMENT EVALUATION REPORT
(IMER)**

For

BFW CORONA PROPERTY



**Prepared by
Natural Resources Management Section
Riverside County Parks**

April, 2009

**Riverside County
Multi-Species Habitat Conservation Plan
Initial Management Evaluation Report
Habitat Management Unit: Gavilan**

RESERVE NAME: **GAV 2**
ACQUISITION NAME: BFW CORONA
PROJECT ID NUMBER: RC2100025

I. SITE PHYSICAL DESCRIPTION

1.A. Site Physical Location & Access:

The BFW Corona property is located north of Interstate 15, east of Earthmover Circle, south of Temescal Canyon Road and west of Hostettler Road near the City of lake Elsinore. Access to the property can easily be obtained through a dirt road that stems from Temescal Canyon Road. Given the terrain and dense vegetation, travel throughout the majority of the site must be done on foot. The property is composed of one, 3.01-acre parcel. The approximate center of the site is located at:

State Plane Coordinates	6206933E, 2212867N (NAD-83, feet)
UTM Coordinates	461470E, 3732600N (NAD-27, meters)
Township / Range / Section	SE1/4, NE1/4 T5S, R5W, S17 Alberhill Quad (SBBM)

1.B. APNs & Acreage:

APN	ACRES
391-480-015	3.01
TOTAL	3.01

1.C. Topography:

The property is located within the riparian corridor of Temescal Wash. The topography of the site is flat with a gradual slope from the eastern and western borders that slope towards the middle of the property forming a section of Temescal Wash.

1.D. Surrounding Land Use:

The surrounding area is composed of a mixture of low density businesses, undeveloped areas of the Temescal Valley, and medium-density housing. Interstate 15 is also located adjacent to the southern border of the property. Given the surrounding land use, the BFW Corona property is located in an area that is heavily used. The property itself however, seems to be unused and not directly effected.

2. BIOLOGICAL ASSESSMENT

2.A. Plant Communities:

The majority of the site is comprised of a riparian scrub plant community. Plants identified within the site include: black willow (*Salix gooddingii*), tree tobacco (*Nicotiana glauca*), mule fat/seep willow (*Baccharis salicifolia*), edible fig (*Ficus carica*) and castor bean (*Ricinus communis*).

2.B. Likely Animal Species:

Animals likely to be found on the site could include the bobcat (*Lynx rufus*), coyote (*Canis latrans*), red-shoulder hawk (*Buteo lineatus*), Least bell's vireo (*Vireo bellii pusillus*), black phoebe (*Sayornis nigricans*), two-striped gartersnake (*Thamnophis hammondi*), and California striped racer (*Masticophis lateralis*).

2.C. Other Habitat or Wildlife Features:

The BFW Corona property is comprised of a riparian scrub plant community and may serve as foraging habitat for many species, especially riparian and migratory birds.

2.D. Target Species:

Please see Appendix A for a qualitative checklist of MSHCP target animal species, and Appendix B for plant species.

3. IMPACTS AND CURRENT CONDITIONS

3.A. Current Uses:

The site is currently not being used, most likely due to the dense vegetation and location of the site.

3.B. Fencing & Access Controls:

Some illegal dumping has been found to occur within the property boundary. Fencing and access controls along the eastern border of the property may need

to implemented to limit the amount of illegal dumping. Trash found onsite included tires, old discarded household items and wood.

3.C. Off-Road Vehicle (OHV) Use / Damage:

No signs of OHV activities were observed within the property boundary.

3.D. Illegal Dumping:

Illegal dumping has been found to occur near the southeastern corner of the property. The majority of the trash was located on the parcel that borders the BFW Corona property to the east (APN 391-150-027). Trash found onsite included tires, old discarded household items and wood.

3.E. Target Shooting & Hunting:

The site is currently not being used for target shooting or hunting.

3.F. Weed Abatement:

No weed abatement activities are currently required.

3.G. Other Recreational Opportunities and Constraints:

None.

3.H. Special Conditions of Purchase:

None Reported.

4. RESTORATION OPPORTUNITIES

4.A. Target Species:

Given the relatively pristine condition of the site little to no restoration opportunities exists.

4.B. Multi-Species Aspects:

Given the relatively pristine condition of the site little to no restoration opportunities exists.

5. RERSERVE DESIGN AND CONNECTIVITY

5.A. Boundary, Edge and Community Location:

The site is surrounded by a mixture of low density businesses, Estelle Mountain, undeveloped areas of the Temescal Valley and medium-density housing. Given the small size of the property, direct access and the proximity to developed areas, edge effects may have a big impact on the property. Direct impacts onsite include illegal dumping, while indirect effects include illegal dumping up stream that has accumulated down stream within the property boundary.

5.B. Connectivity:

The BFW Corona property serves as a component in establishing Proposed Constrained Linkage 6. The linkage, if established, would provide a link to Proposed Linkage 1. When established, the complete linkage would connect Proposed Extension of Existing Core 2, Proposed Core 1 and Existing Core B. Human encroachment and development will be a major factor that may prevent the completion of the connection.

5.C. Nearby Existing Reserves:

The Corona Canyon Donation, Deetz, Tri Valley and Butchart properties are located within a ± 2.0 mile radius of the BFW Corona property. The Lake Mathews/Estelle Mountain Reserve is also located within a ± 2.0 mile radius.

5.D. Priority for Future Purchases:

Priority should be given to acquiring the parcels that will make up the remainder of Proposed Constrained Linkage 6 and Proposed Linkage 1 to ensure that the Core Areas are interconnected. Having Core Areas that are not connected through corridors or linkages would be a failure to the MSHCP.

6. INTERIM MANAGEMENT

6.A. Public Issues:

No public issues are foreseen concerning this site.

6.B. Biological Issues:

No biological issues are foreseen concerning this site.

6.C. Recommended Interim Management Scenario:

1. Periodically monitor and inspect the site for possible signs of new trash and trash accumulation from upstream.
2. Post the property with signs and patrol property monthly.
3. Install fencing along eastern border of the property.

7. **MAPS** – Appendix C.

8. **SITE PHOTOGRAPHS** – Appendix D.

COMMON NAME	SCIENTIFIC NAME	HABITAT	NOT PRESENT	NOT LIKELY PRESENT	POSSIBLY PRESENT	LIKELY PRESENT	CONFIRMED PRESENT
INVERTEBRATES							
RIVERSIDE FAIRY SHRIMP	<i>Streptocephalus woottoni</i>	Vernal Pool	✓				
SANTA ROSA PLATEAU FAIRY SHRIMP	<i>Linderiella santarosae</i>	Vernal Pool	✓				
VERNAL POOL FAIRY SHRIMP	<i>Branchinecta lynchi</i>	Vernal Pool	✓				
INSECTS							
QUINO CHECKERSPOT BUTTERFLY	<i>Euphydryas editha quino</i>	Sage Scrub		✓			
DELHI SANDS FLOWER-LOVING FLY	<i>Rhaphiomidas terminus abdominalis</i>	Delhi Sands	✓				
FISH							
ARROYO CHUB	<i>Gila orcuttii</i>	Aquatic		✓			
SANTA ANA SUCKER	<i>Catostomus santaanae</i>	Aquatic		✓			
AMPHIBIANS							
COAST RANGE NEWT	<i>Taricha torosa tarosa</i>	Riparian / Intermittant Streams		✓			
ARROYO TOAD	<i>Bufo californicus</i>	Riparian / Well-watered Streams			✓		
WESTERN SPADEFoot TOAD	<i>Scaphiopus hammondi</i>	Temp. Pools / Surrounding Uplands			✓		
CALIFORNIA RED-LEGGED FROG	<i>Rana aurora draytonii</i>	Permanent Streams and Rivers		✓			
MOUNTAIN YELLOW-LEGGED FROG	<i>Rana mucosa</i>	Mountain Streams / Rivers / Lakes	✓				
REPTILES							
WESTERN POND TURTLE	<i>Clemmys marmorata pallida</i>	Aquatic			✓		
SAN DIEGO COAST HORNED LIZARD	<i>Phrynosoma comonatum blainvillii</i>	Sage Scrub / Grasslands		✓			
SOUTHERN SAGEBRUSH LIZARD	<i>Sceloporus graciosus vandenburgianus</i>			✓			
GRANITE SPINY LIZARD	<i>Sceloporus orcuttii</i>	Sage Scrub with Rocks		✓			
GRANITE NIGHT LIZARD	<i>Xantusia henshawi henshawi</i>	Rocky sage scrub & chaparral		✓			
ORANGE-THROATED WHIPTAIL	<i>Cnemidophorus hyperythrus beldingii</i>	Sage Scrub		✓			
SAN DIEGO BANDED GECKO	<i>Coleonyx variegatus abbottii</i>	Sage Scrub / Chaparral		✓			
SAN BERNARDINO MOUNTAIN KINGSSNAKE	<i>Lampropeltis zonata parviruba</i>	Upper Elev. Chaparral & Mountains	✓				
SAN DIEGO MOUNTAIN KINGSSNAKE	<i>Lampropeltis zonata pulchra</i>	Upper Elev. Chaparral & Mountains	✓				
SOUTHERN RUBBER BOA	<i>Charina bottae umbratica</i>	Mountains	✓				
NORTHERN RED DIAMOND RATTLESNAKE	<i>Crotalus ruber ruber</i>	Sage Scrub / Chaparral		✓			
BIRDS							
DOUBLE-CRESTED CORMORANT	<i>Phalacrocorax auritus</i>	Aquatic		✓			
AMERICAN BITTERN	<i>Botaurus lentiginosus</i>	Marsh		✓			
GREAT BLUE HERON	<i>Ardea herodias</i>	Waterways & Surrounding Areas			✓		
BLACK-CROWNED NIGHT HERON	<i>Nycticorax nycticorax</i>	Waterways & Surrounding Areas			✓		
WHITE-FACED IBIS	<i>Plegadis chihi</i>	Waterways & Surrounding Areas			✓		
MOUNTAIN PLOVER	<i>Charadrius montanus</i>	Waterways & Surrounding Areas			✓		
TURKEY VULTURE	<i>Carthartes aura</i>	Cosmopolitan			✓		
GOLDEN EAGLE	<i>Aquila chrysaetos</i>	Cosmopolitan		✓			
BALD EAGLE	<i>Haliaeetus leucocephalus</i>	Lakes	✓				
WHITE-TAILED KITE	<i>Elanus leucurus</i>	Brushy Grassland			✓		
NORTHERN HARRIER	<i>Circus cyaneus</i>	Brushy Grassland			✓		
SHARP-SHINNED HAWK	<i>Accipiter striatus</i>	Woodlands & Surrounding Areas			✓		
COOPER'S HAWK	<i>Accipiter cooperii</i>	Woodlands & Surrounding Areas			✓		
NORTHERN GOSHAWK	<i>Accipiter gentilis</i>	Mountains	✓				
SWAINSON'S HAWK	<i>Buteo swainsoni</i>	Open Country		✓			
FERRUGINOUS HAWK	<i>Buteo regalis</i>	Open Country		✓			
OSPREY	<i>Pandion haliaetus</i>	Lakes		✓			
MERLIN	<i>Falco columbarius</i>	Open Woods & Surrounding Areas	✓				
PRAIRIE FALCON	<i>Falco mexicanus</i>	Open Country	✓				
PEREGRINE FALCON	<i>Falco peregrinus</i>	Open Country Near Wetlands			✓		
MOUNTAIN QUAIL	<i>Oreortyx pictus</i>	Mountains	✓				
WESTERN YELLOW-BILLED CUCKOO	<i>Coccyzus americanus occidentalis</i>	Riparian			✓		
CALIFORNIA SPOTTED OWL	<i>Stryx occidentalis occidentalis</i>	Mountains	✓				
BURROWING OWL	<i>Athene cunicularia hypugaea</i>	Open Country	✓				
BLACK SWIFT	<i>Cypseloides niger</i>	Cliffs Near Water		✓			

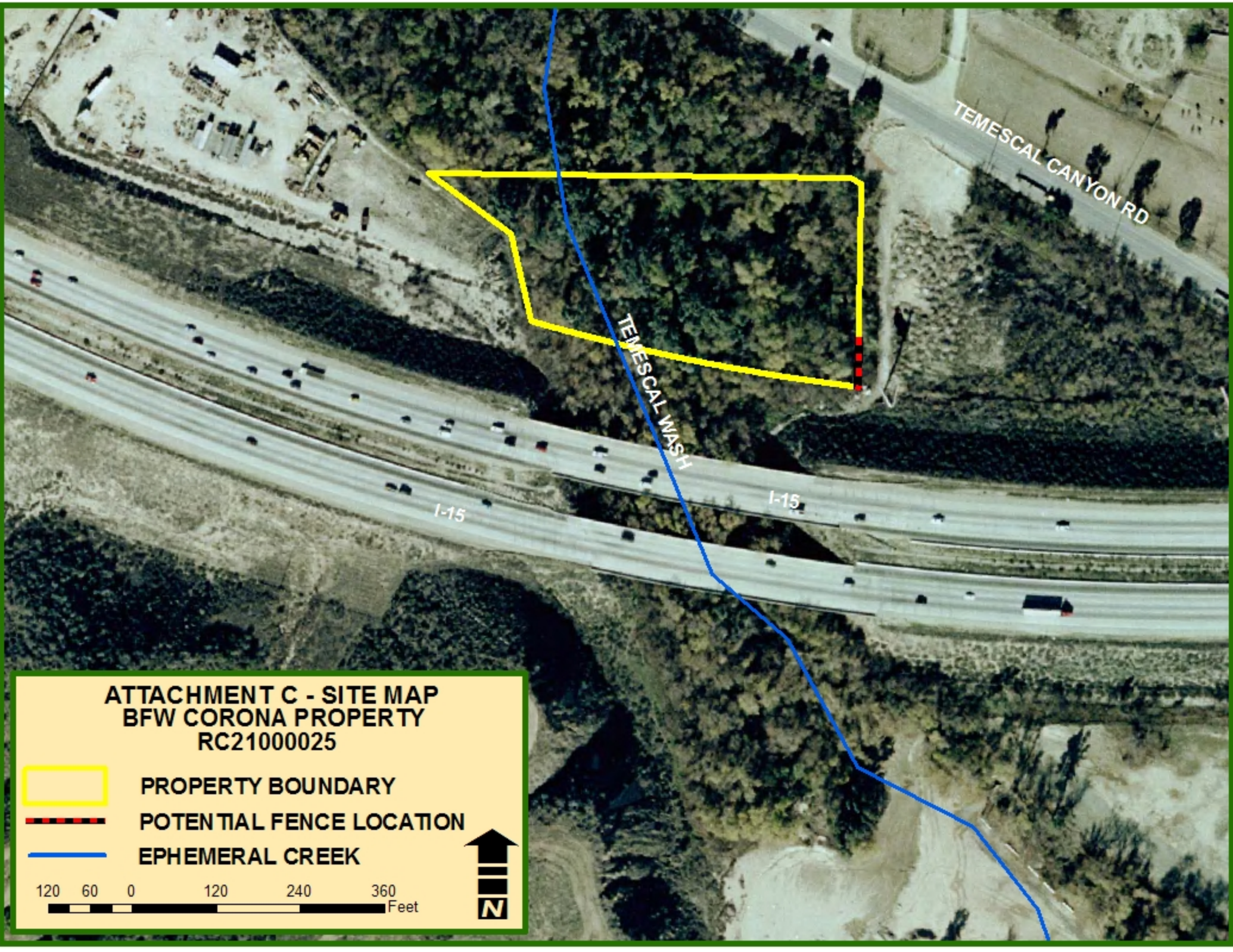
WILLIAMSON'S SAPSUCKER	<i>Sphyrapicus thyroideus</i>	Mountains	✓				
DOWNY WOODPECKER	<i>Picoides pubescens</i>	Areas With Trees		✓			
SOUTHWESTERN WILLOW FLYCATCHER	<i>Empidonax traillii extimus</i>	Riparian			✓		
CALIFORNIA HORNED LARK	<i>Eremophila alpestris acta</i>	Open Grasslands & Sage Scrub	✓				
TREE SWALLOW	<i>Tachycineta bicolor</i>	Wooded Areas Near Water		✓			
PURPLE MARTIN	<i>Progne subis</i>	Open Country	✓				
CACTUS WREN	<i>Campylorhynchus brunneicapillus</i>	Sage Scrub With Cactus	✓				
COASTAL CALIFORNIA GNATCATCHER	<i>Poliotila californica californica</i>	Sage Scrub		✓			
LOGGERHEAD SHRIKE	<i>Lanius lucovicianus</i>	Cosmopolitan		✓			
LEAST BELL'S VIREO	<i>Vireo bellii pusillus</i>	Extensive Riparian			✓		
NASHVILLE WARBLER	<i>Vermivora ruficapilla</i>	Riparian		✓			
YELLOW WARBLER	<i>Dendroica petechia brewsteri</i>	Riparian			✓		
McGILLIVRAY'S WARBLER	<i>Oporomis tolmiei</i>	Riparian			✓		
WILSON'S WARBLER	<i>Wilsonia pusilla</i>	Riparian			✓		
YELLOW-BREASTED CHAT	<i>Icteria virens</i>	Riparian			✓		
GRASSHOPPER SPARROW	<i>Ammodramus savannarum</i>	Grasslands		✓			
BELL'S SAGE SPARROW	<i>Amphispiza bellii bellii</i>	Chaparral	✓				
SO. CAL. RUFOUS-CROWNED SPARROW	<i>Aimophila ruficeps canescens</i>	Sage Scrub / Chaparral Slopes		✓			
LINCOLN'S SPARROW	<i>Melospiza lincolni</i>	Mountain Bogs & Meadows	✓				
TRICOLORED BLACKBIRD	<i>Agelaius tricolor</i>	Marsh		✓			
MAMMALS							
BOBCAT	<i>Lynx rufus</i>	Cosmopolitan				✓	
MOUNTAIN LION	<i>Puma concolor</i>	Remote Mountainous Areas		✓			
LONG-TAILED WEASEL	<i>Mustela frenata</i>	Open Country		✓			
COYOTE	<i>Canis latrans</i>	Cosmopolitan				✓	
BRUSH RABBIT	<i>Sylvilagus bachmani</i>	Chaparral		✓			
SAN DIEGO BLACK-TAILED JACKRABBIT	<i>Lepus californicus bennetti</i>	Open Country		✓			
LOS ANGELES POCKET MOUSE	<i>Perognathus longimembris brevisansus</i>	Streambeds & Sandy Areas			✓		
NORTHWESTERN SAN DIEGO POCKET MOUSE	<i>Chaetodipus fallax fallax</i>	Sage Scrub / Chaparral		✓			
AGUNAGA KANGAROO RAT	<i>Dipodomys merriami collinus</i>	Sandy Areas Near Aguanga	✓				
SAN BERNARDINO KANGAROO RAT	<i>Dipodomys merriami parvus</i>	Sandy Areas / San Jacinto River	✓				
DELZURA KANGAROO RAT	<i>Dipodomys simulans</i>	Sage Scrub / Chaparral	✓				
STEPHENS' KANGAROO RAT	<i>Dipodomys stephensi</i>	Open Country		✓			
SAN DIEGO DESERT WOODRAT	<i>Neotoma lepida intermedia</i>	Sage Scrub / Chaparral		✓			
SAN BERNARDINO FLYING SQUIRREL	<i>Glacomys sabrinus californicus</i>	Mountains	✓				

APPENDIX B.
Target Plant Species

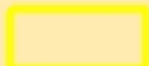


COMMON NAME	SCIENTIFIC NAME	HABITAT(S)	GENERAL LOCATIONS	NOT PRESENT	NOT LIKELY PRESENT	POSSIBLY PRESENT	LIKELY PRESENT	CONFIRMED PRESENT
beautiful hulsea	<i>Hulsea vestita</i> var. <i>callicarpa</i>	Mid-level mountains	SJMTS	✓				
Brand's phacelia	<i>Phacelia stellaris</i>	Sandy benches	SARIV	✓				
California beardtongue	<i>Penstemon californicus</i>	Mid-level mountains	SJMTS, DVA, SRP	✓				
California bedstraw	<i>Galium californicum</i> var. <i>primum</i>	Upper elevation chaparral	SJMTS, DVA, San Timoteo	✓				
California black walnut	<i>Juglans californica</i> var. <i>californica</i>	Streams	SRP, Pedley			✓		
California muhly	<i>Muhlenbergia californica</i>	Riparian / seeps	Sage area, Prado area, GAV, TEM			✓		
California Orcutt grass	<i>Orcuttia californica</i>	Vernal pools	SALT, SRP, SKUNK		✓			
chickweed oxytheca	<i>Oxytheca caryophylloides</i>	Mountains	SJMTS	✓				
Cleveland's bush monkeyflower	<i>Mimulus clevelandii</i>	Upper elevation chaparral	SAMTS	✓				
cliff cinquefoil	<i>Potentilla rimicola</i>	High elevation rocks	SJMTS	✓				
Coulter's goldfields	<i>Lasthenia glabrata</i> var. <i>coulteri</i>	Alkali vernal plains	SJVAL, Perris Valley, Nichols Rd.	✓				
Coulter's matilija poppy	<i>Romneya coulteri</i>	Dry washes and canyons	GAV, TEM		✓			
Davidson's saltscale	<i>Atriplex sereana</i> var. <i> davidsonii</i>	Alkali vernal plains and pools	SJVAL, Perris Valley, Nichols Rd.	✓				
Englemann oak	<i>Quercus engelmannii</i>	Mesic fans and slopes	SRP, SAMTS, GAV	✓				
Fish's mildwort	<i>Polygala cornuta</i> var. <i>fishiae</i>	Oak riparian woodlands	SRP, SAMTS, Temecula area		✓			
graceful tarplant	<i>Holcarpa virgata</i> elongata	Level grasslands and shrublands	SRP	✓				
Hall's monardella	<i>Monardella macrantha</i> var. <i>hallii</i>	Mountain foothills, dry slopes, ridges	SAMTS, Pine Cove area	✓				
Hammitt's clay-cress	<i>Sibaropsis hammittii</i>	Clay grasslands	SAMTS	✓				
heart-leaved pitcher plant	<i>Lepechinia cardiophylla</i>	Forests	SAMTS	✓				
intermediate mariposa lily	<i>Calochortus weedii</i> var. <i>intermedius</i>	Dry rocky slopes in SS / CHAP, burned areas	SAMTS, DVA, VAIL	✓				
Jaegar's milk-vetch	<i>Astragalus pachypus</i> var. <i>jaegeri</i>	Dry areas	VAIL, Agunaga area, Protrero area	✓				
Johnston's rock cress	<i>Arabis johnstonii</i>	Upper elevation chaparral, forests	SJMTS	✓				
lemon lily	<i>Lilium parryi</i>	Mountain wet places	SJMTS	✓				
little mouseltail	<i>Myosaurus minimum</i> apus	Vernal pools, alkali sinks	SALT, SRP, GAV, MARB	✓				
long-spined spine flower	<i>Chorizanthe polygonoides</i> var. <i>longispina</i>	Rocky clay soils	GAV, TEM, SAMTS, SRP	✓				
many-stemmed dudleya	<i>Dudleya multicaulis</i>	Rocky clay soils, outcrops	GAV, TEM	✓				
Mojave tarplant	<i>Deinandra</i> [Hemizonia] <i>mohavensis</i>	Clay or silty streams	SJMTS and foothills	✓				
mud nama	<i>Nama stenocarpum</i>	Marshes	SJRIV near Gilman		✓			
Munz's mariposa lily	<i>Calochortus palmeri</i> var. <i>munzii</i>	Mountains, chaparral	SJMTS	✓				
Munz's onion	<i>Allium munzii</i>	Clay soils in SS / CHAP / Grasslands	GAV, TEM, SAMTS, SKUNK, SKIN	✓				
Nevin'a barberry	<i>Berberis nevinii</i>	Course soils in chaparral	Varies	✓				
ocellated Humboldt lily	<i>Lilium humboldtii</i> ocellatum	Mountain riparian	SAMTS, Palomar Mts.		✓			
Orcutt's brodiaea	<i>Brodiaea orcuttii</i>	Mesic grasslands and pools	SRP		✓			
Palmer's grapplinghook	<i>Harpagonella palmeri</i>	Clay soils in SS / CHAP / Grasslands	varies	✓				
Palomar monkeyflower	<i>Mimulus diffusus</i>	Sandy soils in upper elev. CHAP, forests	SAMTS, SJMTS	✓				
Parish's brittlescale	<i>Atriplex parishii</i>	Alkaine soils	SALT, lower SJRIV	✓				
Parish's meadowfoam	<i>Limnanthes gracilis</i> var. <i>parishii</i>	Ephemeral wetlands	SRP		✓			

APPENDIX B.
 Target Plant Species

Parry's spine flower	<i>Chorizanthe parryi var. parryi</i>	Alluvial scrub	Varies	✓				
Payson'r jewelflower	<i>Caulanthus simulans</i>	Pinyon-Juniper, chaparral, sage scrub	Agunaga area	✓				
peninsular spine flower	<i>Chorizanthe leptotheca</i>	Dry open areas	Varies	✓				
Plummer's mariposa lily	<i>Calochortus plummerae</i>	Varies	SJMTS, Jurupa Hills	✓				
prostrate navarretia	<i>Navarretia prostrata</i>	Sage scrub, vernal pools, grasslands	SRP	✓				
prostrate spine flower	<i>Chorizanthe procumbrens</i>	Sandy openings in CHAP / SS	SAMTS	✓				
Rainbow manzanita	<i>Arctostaphylos rainbowensis</i>	Iron rich soils in chaparral	SRP, GAV, TEM, Wildomar area	✓				
round-leaved filaree	<i>Erodium macrophyllum</i>	Grasslands	GAV, DVA, TEM	✓				
San Diego ambrosia	<i>Ambrosia pumila</i>	Grasslands	Alberhill, Lake Street, SKUNK	✓				
San Diego button-celery	<i>Eryngium aristulatum var. parishii</i>	Vernal pools	SRP		✓			
San Jacinto Mountains bedstraw	<i>Galium angustifolium jacinticum</i>	Forests	SJMTS	✓				
San Jacinto Valley crownscale	<i>Atriplex coronatum var. notatior</i>	Floodplains	MYSTIC, SALT			✓		
San Miguel savory	<i>Satureja chandleri</i>	Varies	SRP		✓			
Santa Ana River woollystar	<i>Eriastrum densifolium sanctorum</i>	Alluvial scrub (immature)	SARIV		✓			
shaggy-haired alumroot	<i>Heuchera hirsutissima</i>	Forests	SJMTS	✓				
slender-horned spine flower	<i>Dodecahema leptoceras</i>	Alluvial scrub (mature)	Indian Creek, VAIL area		✓			
small-flowered microserius	<i>Microserius douglasii var. platycarpha</i>	Clay foothills and grasslands	SRP, Bachelor Mt. area	✓				
small-flowered morning-glory	<i>Convolvulus simulans</i>	Clay and serpentine soils in grasslands	Varies	✓				
smooth tarplant	<i>Centromadia pungens (Hemizonia pungens laevis)</i>	Varies	Varies		✓			
spreading navarretia	<i>Navarretia fossalis</i>	Vernal pools and ditches	SALT, SJRIV			✓		
sticky-leaved dudleya	<i>Dudleya viscida</i>	Rocky canyon slopes	SAMTS	✓				
thread-leaved brodiaea	<i>Brodiaea filifolia</i>	Alkali pools, mesic grasslands	SJRIV, SALT, SRP			✓		
Vail Lake ceanothus	<i>Ceanothus ophiocilius</i>	Dry ridgetops in chaparral	VAIL area	✓				
vernal barley	<i>Hordeum intercedens</i>	Vernal pools and mesic grasslands	SALT, SJRIV	✓				
Wright's trichocoronis	<i>Trichocoronis wrightii var. wrightii</i>	Alkali vernal pools and flats	SJRIV, MYSTIC		✓			
Yucaipa onion	<i>Allium marvinii</i>	Clay soils in chaparral	Beaumont area	✓				



**ATTACHMENT C - SITE MAP
BFW CORONA PROPERTY
RC21000025**

-  PROPERTY BOUNDARY
-  POTENTIAL FENCE LOCATION
-  EPHEMERAL CREEK

120 60 0 120 240 360 Feet



APPENDIX D.



Middle of property looking south.



Eastern border looking west.

APPENDIX D.



From Temescal Canyon Road looking into riparian area next to BFW Corona.



Eastern border looking southwest.