

**INITIAL MANAGEMENT EVALUATION REPORT  
(IMER)**

**For**

**BIGGERSTAFF PROPERTY**



**Prepared by  
Natural Resources Management Section  
Riverside County Parks**

**August, 2007**

**Riverside County  
Multi-Species Habitat Conservation Plan  
Initial Management Evaluation Report  
Habitat Management Unit: Santa Ana Mountain**

RESERVE NAME: **SAM 3**  
ACQUISITION NAME: BIGGERSTAFF  
PROJECT ID NUMBER: RC22000018

**I. SITE PHYSICAL DESCRIPTION**

**1.A. Site Physical Location & Access:**

The triangular Biggerstaff property is located on the Santa Rosa Plateau, west of Calle Del Sol, south of Avenida Matorral, east of Corona Cala Camino and north of Avocado Mesa Road southwest of the City of Murrieta. Access to the site can be obtained through Calle Del Sol, which stems from Avocado Mesa Road. Given the terrain and lack of established roads, travel throughout the site must be done on foot. The property is composed of one, 20.68-acre parcel. The approximate center of the site is located at:

State Plane Coordinates	6235926E, 2127646N (NAD-83, feet)
UTM Coordinates	470490E, 3706696N (NAD-27, meters)
Township / Range / Section	T8S, R4W, S5,8 Wildomar & Fallbrook Quad (SBBM)

**1.B. APNs & Acreage:**

APN	ACRES
932-170-018	20.68
<b>TOTAL</b>	<b>20.68</b>

**1.C. Topography:**

The property is located along the slope of a hillside and a drainage area runs through the middle of the property. The majority of the topography is moderately sloped and accessible by foot.

**1.D. Surrounding Land Use:**

The site is surrounded by the natural open space of the Santa Ana Mountain range. Low-density housing surrounds the site with many of the residents

participating in equestrian activities. No off-highway vehicle (OHV) activity was noticed on the site or within the surrounding area.

## **2. BIOLOGICAL ASSESSMENT**

### **2.A. Plant Communities:**

The majority of the site is made up of oak woodland. Smaller areas of chaparral and grassland plant communities can also be found within the property boundary. Plants identified within the site include: coast live oak (*Quercus agrifolia*), wild oat (*Avena fatua*), scrub oak (*Quercus berberidifolia*), toyon (*Heteromeles arbutifolia*) and California buckwheat (*Eriogonum fasciculatum*). Non-native annual grasses (e.g. *Bromus spp.*) can also be found in disturbed areas near the southern border.

### **2.B. Likely Animal Species:**

Animals likely to be found on the site could include the California ground squirrel (*Spermophilus beecheyi*), bobcat (*Lynx rufus*), coyote (*Canis latrans*), American crow (*Corvus brachyrhynchos*), common raven (*Corvus corax*), red-tailed hawk (*Buteo jamaicensis*), southern Pacific rattlesnake (*Crotalus viridis*), Baja California lyresnake (*Trimorphodon biscutatus lyrophanes*), western whiptail (*Cnemidophorus tigris*), San Diego alligator lizard (*Elgaria multicarinata webbi*) and side-blotched lizard (*Uta stansburiana*). Mountain lions (*Puma concolor*) have been known to inhabit the area.

### **2.C. Other Habitat or Wildlife Features:**

The Biggerstaff property is located near the Cleveland National Forest and serves a necessary piece for MSHCP Proposed Linkage 9.

### **2.D. Target Species:**

Please see Appendix A for a qualitative checklist of MSHCP target animal species, and Appendix B for plant species.

## **3. IMPACTS AND CURRENT CONDITIONS**

### **3.A. Current Uses:**

The majority of the site is currently not being used, most likely due to the topography, vegetation density and remoteness of the site. A horse trail exists in the northwest section of the site and seems to be regularly used.

**3.B. Fencing & Access Controls:**

Fencing along the perimeter of the site is unnecessary due to the remoteness of the site and lack of easy access. The site is not fully accessible by vehicle. Due to the lack of visitors, access controls are not expected to become a problem. A future gate may need to be installed to limit access from Calle Del Sol and Avocado Mesa Road.

**3.C. Off-Road Vehicle (OHV) Use / Damage:**

No signs of OHV activities were observed within the property boundary or within the surrounding area.

**3.D. Illegal Dumping:**

Given the topography and location of the site, the site is currently not easily accessible for illegal dumping.

**3.E. Target Shooting & Hunting:**

The site is currently not being used for target shooting or hunting.

**3.F. Weed Abatement:**

No weed abatement activities are currently required.

**3.G. Other Recreational Opportunities and Constraints:**

With proper management and funding, recreation opportunities could exist in the future for: hiking, nature study (especially for oak recruitment), equestrian use, aesthetics and solitude.

**3.H. Special Conditions of Purchase:**

None Reported.

**4. RESTORATION OPPORTUNITIES**

**4.A. Target Species:**

Given the relatively pristine condition of the site, little to no target species specific restoration opportunities exists.

Future restoration activities will require the removal of non-native grasses and restoring the native plant community.

**4.B. Multi-Species Aspects:**

The multiple species importance of this site primarily lies in it serving as a component in the linkage between the Cleveland National Forest (Core Area B) and the Santa Rosa Plateau Ecological Reserve (Core Area F) to the east.

**5. RERSERVE DESIGN AND CONNECTIVITY**

**5.A. Boundary, Edge and Community Location:**

The boundary of the site is surrounded by the open space land found throughout the area. The open space land also supports ranchette style housing, with the majority of the residents participating in equestrian activities.

**5.B. Connectivity:**

This property serves as a component in establishing a linkage between the Cleveland National Forest and Santa Rosa Plateau (i.e., the Tenaja corridor). By establishing the proposed linkage it will help ensure that movement between the established core areas is possible. Human encroachment and development will be a major factor that will prevent this connection.

**5.C. Nearby Existing Reserves:**

Currently acquired open-space land aiding in the establishment of the linkage is the MSHCP Austin-Murrieta and Damietta properties; which are located approximately 2 miles to the west. The Tran/Clarke property and Fethke property are located approximately 2 miles to the east; while the Kelly property is located 500 feet to the west. The Santa Rosa Plateau Ecological Reserve is located within a 2 mile radius of the property.

**5.D. Priority for Future Purchases:**

Priority should be given to acquiring the parcels that exist between the Cleveland National Forest and the Santa Rosa Plateau Reserve. This would help ensure that the proposed linkage (Linkage 9) between the B and F core areas will be established in an area likely to be developed in the near future.

**6. INTERIM MANAGEMENT**

**6.A. Public Issues:**

No public issues are foreseen concerning this site.

**6.B. Biological Issues:**

Removal of non-native grasses and restoration to a native plant community will be a future management goal.

**6.C. Recommended Interim Management Scenario:**

Periodically monitor and inspect the site for possible new OHV trails and determine if the frequency of visitors is increasing or remaining the same by documenting any new disturbances to the land (e.g. new OHV trails, trash, shotgun shells etc.).

**7. MAPS – Appendix C.**

**8. SITE PHOTOGRAPHS – Appendix D.**

COMMON NAME	SCIENTIFIC NAME	HABITAT	NOT PRESENT	NOT LIKELY PRESENT	POSSIBLY PRESENT	LIKELY PRESENT	CONFIRMED PRESENT
<b>INVERTEBRATES</b>							
RIVERSIDE FAIRY SHRIMP	<i>Streptocephalus woottoni</i>	Vernal Pool	✓				
SANTA ROSA PLATEAU FAIRY SHRIMP	<i>Linderiella santarosae</i>	Vernal Pool	✓				
VERNAL POOL FAIRY SHRIMP	<i>Branchinecta lynchi</i>	Vernal Pool	✓				
<b>INSECTS</b>							
QUINO CHECKERSPOT BUTTERFLY	<i>Euphydryas editha quino</i>	Sage Scrub		✓			
DELHI SANDS FLOWER-LOVING FLY	<i>Rhaphiomidas terminus abdominalis</i>	Delhi Sands	✓				
<b>FISH</b>							
ARROYO CHUB	<i>Gila orcuttii</i>	Aquatic	✓				
SANTA ANA SUCKER	<i>Catostomus santaanae</i>	Aquatic	✓				
<b>AMPHIBIANS</b>							
COAST RANGE NEWT	<i>Taricha torosa tarosa</i>	Riparian / Intermittant Streams		✓			
ARROYO TOAD	<i>Bufo californicus</i>	Riparian / Well-watered Streams		✓			
WESTERN SPADEFOOT TOAD	<i>Scaphiopus hammondi</i>	Temp. Pools / Surrounding Uplands		✓			
CALIFORNIA RED-LEGGED FROG	<i>Rana aurora draytonii</i>	Permanent Streams and Rivers	✓				
MOUNTAIN YELLOW-LEGGED FROG	<i>Rana mucosa</i>	Mountain Streams / Rivers / Lakes	✓				
<b>REPTILES</b>							
WESTERN POND TURTLE	<i>Clemmys marmorata pallida</i>	Aquatic		✓			
SAN DIEGO COAST HORNED LIZARD	<i>Phrynosoma coronatum blainvillii</i>	Sage Scrub / Grasslands			✓		
SOUTHERN SAGEBRUSH LIZARD	<i>Sceloporus graciosus vandenburgianus</i>				✓		
GRANITE SPINY LIZARD	<i>Sceloporus orcuttii</i>	Sage Scrub with Rocks		✓			
GRANITE NIGHT LIZARD	<i>Xantusia henshawi henshawi</i>	Rocky sage scrub & chaparral			✓		
ORANGE-THROATED WHIPTAIL	<i>Cnemidophorus hyperythrus beldingii</i>	Sage Scrub			✓		
SAN DIEGO BANDED GECKO	<i>Coleonyx variegatus abbottii</i>	Sage Scrub / Chaparral			✓		
SAN BERNARDINO MOUNTAIN KINGSSNAKE	<i>Lampropeltis zonata parviruba</i>	Upper Elev. Chaparral & Mountains		✓			
SAN DIEGO MOUNTAIN KINGSSNAKE	<i>Lampropeltis zonata pulchra</i>	Upper Elev. Chaparral & Mountains		✓			
SOUTHERN RUBBER BOA	<i>Charina bottae umbratica</i>	Mountains	✓				
NORTHERN RED DIAMOND RATTLESNAKE	<i>Crotalus ruber ruber</i>	Sage Scrub / Chaparral			✓		
<b>BIRDS</b>							
DOUBLE-CRESTED CORMORANT	<i>Phalacrocorax auritus</i>	Aquatic	✓				
AMERICAN BITTERN	<i>Botaurus lentiginosus</i>	Marsh	✓				
GREAT BLUE HERON	<i>Ardea herodias</i>	Waterways & Surrounding Areas	✓				
BLACK-CROWNED NIGHT HERON	<i>Nycticorax nycticorax</i>	Waterways & Surrounding Areas	✓				
WHITE-FACED IBIS	<i>Plegadis chihi</i>	Waterways & Surrounding Areas	✓				
MOUNTAIN PLOVER	<i>Charadrius montanus</i>	Waterways & Surrounding Areas	✓				
TURKEY VULTURE	<i>Carthartes aura</i>	Cosmopolitan				✓	
GOLDEN EAGLE	<i>Aquila chrysaetos</i>	Cosmopolitan			✓		
BALD EAGLE	<i>Haliaeetus leucocephalus</i>	Lakes	✓				
WHITE-TAILED KITE	<i>Elanus leucurus</i>	Brushy Grassland		✓			
NORTHERN HARRIER	<i>Circus cyaneus</i>	Brushy Grassland		✓			
SHARP-SHINNED HAWK	<i>Accipiter striatus</i>	Woodlands & Surrounding Areas			✓		
COOPER'S HAWK	<i>Accipiter cooperii</i>	Woodlands & Surrounding Areas			✓		
NORTHERN GOSHAWK	<i>Accipiter gentilis</i>	Mountains	✓				
SWAINSON'S HAWK	<i>Buteo swainsoni</i>	Open Country	✓				
FERRUGINOUS HAWK	<i>Buteo regalis</i>	Open Country		✓			
OSPREY	<i>Pandion haliaetus</i>	Lakes	✓				
MERLIN	<i>Falco columbarius</i>	Open Woods & Surrounding Areas		✓			
PRAIRIE FALCON	<i>Falco mexicanus</i>	Open Country		✓			
PEREGRINE FALCON	<i>Falco peregrinus</i>	Open Country Near Wetlands		✓			
MOUNTAIN QUAIL	<i>Oreortyx pictus</i>	Mountains			✓		
WESTERN YELLOW-BILLED CUCKOO	<i>Coccyzus americanus occidentalis</i>	Riparian	✓				
CALIFORNIA SPOTTED OWL	<i>Stryx occidentalis occidentalis</i>	Mountains	✓				
BURROWING OWL	<i>Athene cucularia hypugaea</i>	Open Country	✓				
BLACK SWIFT	<i>Cypseloides niger</i>	Cliffs Near Water	✓				
WILLIAMSON'S SAPSUCKER	<i>Sphyrapicus thyroideus</i>	Mountains	✓				

DOWNY WOODPECKER	<i>Picoides pubescens</i>	Areas With Trees			✓		
SOUTHWESTERN WILLOW FLYCATCHER	<i>Empidonax traillie extimus</i>	Riparian	✓				
CALIFORNIA HORNED LARK	<i>Eremophila alpestris acta</i>	Open Grasslands & Sage Scrub			✓		
TREE SWALLOW	<i>Tachycineta bicolor</i>	Wooded Areas Near Water		✓			
PURPLE MARTIN	<i>Progne subis</i>	Open Country	✓				
CACTUS WREN	<i>Campylorhynchus brunneicapillus</i>	Sage Scrub With Cactus	✓				
COASTAL CALIFORNIA GNATCATCHER	<i>Polioptila californica californica</i>	Sage Scrub			✓		
LOGGERHEAD SHRIKE	<i>Lanius lucovicianus</i>	Cosmopolitan			✓		
LEAST BELL'S VIREO	<i>Vireo bellii pusillus</i>	Extensive Riparian	✓				
NASHVILLE WARBLER	<i>Vermivora ruficapilla</i>	Riparian	✓				
YELLOW WARBLER	<i>Dendroica petechia brewsteri</i>	Riparian	✓				
McGILLIVRAY'S WARBLER	<i>Oporornis tolmiei</i>	Riparian	✓				
WILSON'S WARBLER	<i>Wilsonia pusilla</i>	Riparian	✓				
YELLOW-BREASTED CHAT	<i>Icteria virens</i>	Riparian	✓				
GRASSHOPPER SPARROW	<i>Ammodramus savannarum</i>	Grasslands	✓				
BELL'S SAGE SPARROW	<i>Amphispiza bellii bellii</i>	Chaparral			✓		
SO. CAL. RUFOUS-CROWNED SPARROW	<i>Aimophila ruficeps canescens</i>	Sage Scrub / Chaparral Slopes			✓		
LINCOLN'S SPARROW	<i>Melospiza lincolni</i>	Mountain Bogs & Meadows	✓				
TRICOLORED BLACKBIRD	<i>Agelaius tricolor</i>	Marsh	✓				
<b>MAMMALS</b>							
BOBCAT	<i>Lynx rufus</i>	Cosmopolitan				✓	
MOUNTAIN LION	<i>Puma concolor</i>	Remote Mountainous Areas				✓	
LONG-TAILED WEASEL	<i>Mustela frenata</i>	Open Country		✓			
COYOTE	<i>Canis latrans</i>	Cosmopolitan				✓	
BRUSH RABBIT	<i>Sylvilagus bachmani</i>	Chaparral		✓			
SAN DIEGO BLACK-TAILED JACKRABBIT	<i>Lepus californicus bennettii</i>	Open Country		✓			
LOS ANGELES POCKET MOUSE	<i>Perognathus longimembris brevisansus</i>	Streambeds & Sandy Areas		✓			
NORTHWESTERN SAN DIEGO POCKET MOUSE	<i>Chaetodipus fallax fallax</i>	Sage Scrub / Chaparral			✓		
AGUNAGA KANGAROO RAT	<i>Dipodomys merriami collinus</i>	Sandy Areas Near Aguanga	✓				
SAN BERNARDINO KANGAROO RAT	<i>Dipodomys merriami parvus</i>	Sandy Areas / San Jacinto River	✓				
DELZURA KANGAROO RAT	<i>Dipodomys simulans</i>	Sage Scrub / Chaparral			✓		
STEPHENS' KANGAROO RAT	<i>Dipodomys stephensi</i>	Open Country		✓			
SAN DIEGO DESERT WOODRAT	<i>Neotoma lepida intermedia</i>	Sage Scrub / Chaparral			✓		
SAN BERNARDINO FLYING SQUIRREL	<i>Glaycomys sabrinus californicus</i>	Mountains	✓				

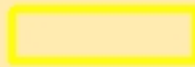
APPENDIX B.  
 Target Plant Species

COMMON NAME	SCIENTIFIC NAME	HABITAT(S)	GENERAL LOCATIONS	NOT PRESENT	NOT LIKELY PRESENT	POSSIBLY PRESENT	LIKELY PRESENT	CONFIRMED PRESENT
beautiful hulsea	<i>Hulsea vestita</i> var. <i>callicarpa</i>	Mid-level mountains	SJMTS		✓			
Brand's phacelia	<i>Phacelia stellaris</i>	Sandy benches	SARIV	✓				
California beardtongue	<i>Penstemon californicus</i>	Mid-level mountains	SJMTS, DVA, SRP		✓			
California bedstraw	<i>Galium californicum</i> var. <i>primum</i>	Upper elevation chaparral	SJMTS, DVA, San Timoteo		✓			
California black walnut	<i>Juglans californica</i> var. <i>californica</i>	Streams	SRP, Pedley	✓				
California muhly	<i>Muhlenbergia californica</i>	Riparian / seeps	Sage area, Prado area, GAV, TEM	✓				
California Orcutt grass	<i>Orcuttia californica</i>	Vernal pools	SALT, SRP, SKUNK	✓				
chickweed oxytheca	<i>Oxytheca caryophylloides</i>	Mountains	SJMTS	✓				
Cleveland's bush monkeyflower	<i>Mimulus clevelandii</i>	Upper elevation chaparral	SAMTS	✓				
cliff cinquefoil	<i>Potentilla rimicola</i>	High elevation rocks	SJMTS	✓				
Coulter's goldfields	<i>Lasthenia glabrata</i> var. <i>coulteri</i>	Alkali vernal plains	SJVAL, Perris Valley, Nichols Rd.	✓				
Coulter's matilija poppy	<i>Romneya coulteri</i>	Dry washes and canyons	GAV, TEM	✓				
Davidson's saltscale	<i>Atriplex sereana</i> var. <i> davidsonii</i>	Alkali vernal plains and pools	SJVAL, Perris Valley, Nichols Rd.	✓				
Englemann oak	<i>Quercus engelmannii</i>	Mesic fans and slopes	SRP, SAMTS, GAV			✓		
Fish's mildwort	<i>Polygala cornuta</i> var. <i>fishiae</i>	Oak riparian woodlands	SRP, SAMTS, Temecula area		✓			
graceful tarplant	<i>Holocarpa virgata</i> <i>elongata</i>	Level grasslands and shrublands	SRP	✓				
Hall's monardella	<i>Monardella macrantha</i> var. <i>hallii</i>	Mountain foothills, dry slopes, ridges	SAMTS, Pine Cove aera		✓			
Hammitt's clay-cress	<i>Sibaropsis hammittii</i>	Clay grasslands	SAMTS	✓				
heart-leaved pitcher plant	<i>Lepechinia cardiophylla</i>	Forests	SAMTS	✓				
intermediate mariposa lily	<i>Calochortus weedii</i> var. <i>intermedius</i>	Dry rocky slopes in SS / CHAP, burned areas	SAMTS, DVA, VAIL		✓			
Jaeger's milk-vetch	<i>Astragalus pachypus</i> var. <i>jaegeri</i>	Dry areas	VAIL, Agunaga area, Protrero area		✓			
Johnston's rock cress	<i>Arabis johnstonii</i>	Upper elevation chaparral, forests	SJMTS		✓			
lemon lily	<i>Lilium parryi</i>	Mountain wet places	SJMTS	✓				
little mouseltail	<i>Myosaurus minimum</i> <i>apus</i>	Vernal pools, alkali sinks	SALT, SRP, GAV, MARB	✓				
long-spined spine flower	<i>Chorizanthe polygonoides</i> var. <i>longispina</i>	Rocky clay soils	GAV, TEM, SAMTS, SRP			✓		
many-stemmed dudleya	<i>Dudleya multicaulis</i>	Rocky clay soils, outcrops	GAV, TEM			✓		
Mojave tarplant	<i>Deinandra</i> [ <i>Hemizonia</i> ] <i>mohavensis</i>	Clay or silty streams	SJMTS and foothills		✓			
mud nama	<i>Nama stenocarpum</i>	Marshes	SJRIV near Gilman	✓				
Munz's mariposa lily	<i>Calochortus palmeri</i> var. <i>munzii</i>	Mountains, chaparral	SJMTS		✓			
Munz's onion	<i>Allium munzii</i>	Clay soils in SS / CHAP / Grasslands	GAV, TEM, SAMTS, SKUNK, SKIN		✓			
Nevin'a barberry	<i>Berberis nevinii</i>	Course soils in chaparral	Varies		✓			
ocellated Humboldt lily	<i>Lilium humboldtii</i> <i>ocellatum</i>	Mountain riparian	SAMTS, Palomar Mts.	✓				
Orcutt's brodiaea	<i>Brodiaea orcuttii</i>	Mesic grasslands and pools	SRP		✓			
Palmer's grapplinghook	<i>Harpagonella palmeri</i>	Clay soils in SS / CHAP / Grasslands	varies		✓			
Palomar monkeyflower	<i>Mimulus diffusus</i>	Sandy soils in upper elev. CHAP, forests	SAMTS, SJMTS		✓			
Parish's brittlescale	<i>Atriplex parishii</i>	Alkaine soils	SALT, lower SJRIV		✓			
Parish's meadowfoam	<i>Limnanthes gracilis</i> var. <i>parishii</i>	Ephemeral wetlands	SRP	✓				

APPENDIX B.  
 Target Plant Species

<b>Parry's spine flower</b>	<i>Chorizanthe parryi</i> var. <i>parryi</i>	Alluvial scrub	Varies	✓				
<b>Payson'r jewelflower</b>	<i>Caulanthus simulans</i>	Pinyon-Juniper, chaparral, sage scrub	Agunaga area		✓			
<b>peninsular spine flower</b>	<i>Chorizanthe leptotheca</i>	Dry open areas	Varies		✓			
<b>Plummer's mariposa lily</b>	<i>Calochortus plummerae</i>	Varies	SJMTS, Jurupa Hills		✓			
<b>prostrate navarretia</b>	<i>Navarretia prostrata</i>	Sage scrub, vernal pools, grasslands	SRP			✓		
<b>prostrate spine flower</b>	<i>Chorizanthe procumbrens</i>	Sandy openings in CHAP / SS	SAMTS		✓			
<b>Rainbow manzanita</b>	<i>Arctostaphylos rainbowensis</i>	Iron rich soils in chaparral	SRP, GAV, TEM, Wildomar area		✓			
<b>round-leaved filaree</b>	<i>Erodium macrophyllum</i>	Grasslands	GAV, DVA, TEM	✓				
<b>San Diego ambrosia</b>	<i>Ambrosia pumila</i>	Grasslands	Alberhill, Lake Street, SKUNK	✓				
<b>San Diego button-celery</b>	<i>Eryngium aristulatum</i> var. <i>parishii</i>	Vernal pools	SRP	✓				
<b>San Jacinto Mountains bedstraw</b>	<i>Galium angustifolium jacinticum</i>	Forests	SJMTS	✓				
<b>San Jacinto Valley crownscale</b>	<i>Atriplex coronatum</i> var. <i>notatior</i>	Floodplains	MYSTIC, SALT	✓				
<b>San Miguel savory</b>	<i>Satureja chandleri</i>	Varies	SRP			✓		
<b>Santa Ana River woollystar</b>	<i>Eriastrum densifolium sanctorum</i>	Alluvial scrub (immature)	SARIV	✓				
<b>shaggy-haired alumroot</b>	<i>Heuchera hirsutissima</i>	Forests	SJMTS	✓				
<b>slender-horned spine flower</b>	<i>Dodecahema leptoceras</i>	Alluvial scrub (mature)	Indian Creek, VAIL area	✓				
<b>small-flowered microserius</b>	<i>Microserius douglasii</i> var. <i>platycarpha</i>	Clay foothills and grasslands	SRP, Bachelor Mt. area		✓			
<b>small-flowered morning-glory</b>	<i>Convolvulus simulans</i>	Clay and serpentine soils in grasslands	Varies		✓			
<b>smooth tarplant</b>	<i>Centromadia pungens</i> ( <i>Hemizonia pungens laevis</i> )	Varies	Varies			✓		
<b>spreading navarretia</b>	<i>Navarretia fossalis</i>	Vernal pools and ditches	SALT, SJRIV	✓				
<b>sticky-leaved dudleya</b>	<i>Dudleya viscida</i>	Rocky canyon slopes	SAMTS		✓			
<b>thread-leaved brodiaea</b>	<i>Brodiaea filifolia</i>	Alkali pools, mesic grasslands	SJRIV, SALT, SRP		✓			
<b>Vail Lake ceanothus</b>	<i>Ceanothus ophiocilius</i>	Dry ridgetops in chaparral	VAIL area	✓				
<b>vernal barley</b>	<i>Hordeum intercedens</i>	Vernal pools and mesic grasslands	SALT, SJRIV	✓				
<b>Wright's trichocoronis</b>	<i>Trichocoronis wrightii</i> var. <i>wrightii</i>	Alkali vernal pools and flats	SJRIV, MYSTIC	✓				
<b>Yucaipa onion</b>	<i>Allium marvinii</i>	Clay soils in chaparral	Beaumont area		✓			

**APPENDIX C. SITE MAP  
BIGGERSTAFF PROPERTY  
RC22000018**



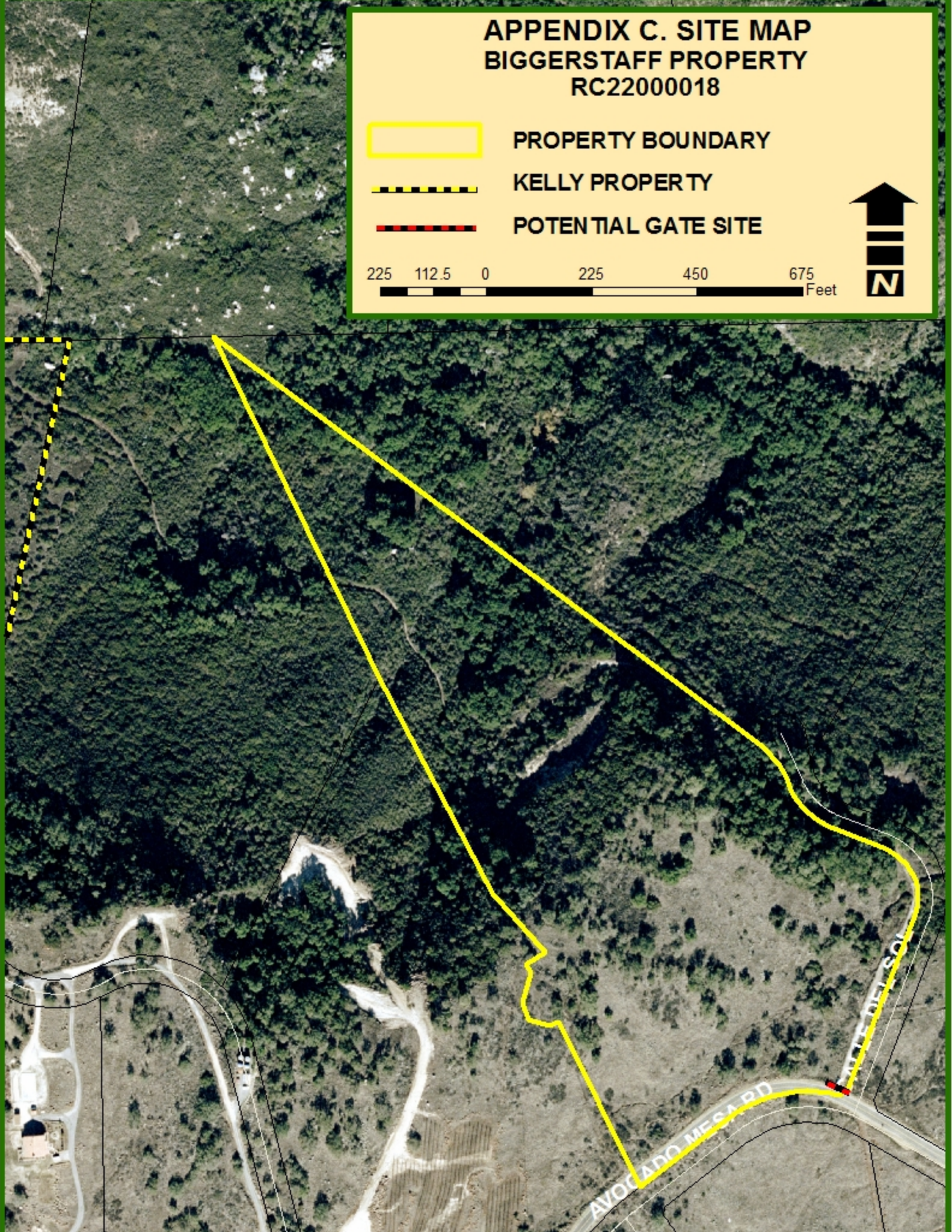
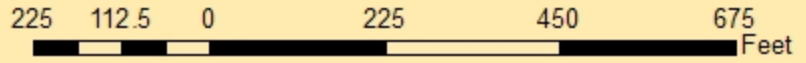
**PROPERTY BOUNDARY**



**KELLY PROPERTY**



**POTENTIAL GATE SITE**



## APPENDIX D



Southern border looking north.



Southern corner looking north.

## APPENDIX D



Southeast corner looking northwest.



Southeast corner looking west.