

**INITIAL MANAGEMENT EVALUATION REPORT
(IMER)**

For

DEJESUS PROPERTY



**Prepared by
Natural Resources Management Division
Riverside County Parks**

January, 2008

**Riverside County
Multi-Species Habitat Conservation Plan
Initial Management Evaluation Report
Habitat Management Unit: Sage**

RESERVE NAME: **SAGE 3**
ACQUISITION NAME: DeJESUS
PROJECT ID NUMBER: RC22000088

1. SITE PHYSICAL DESCRIPTION

1.A. Site Physical Location & Access:

The DeJesus site is located north of Holly Ann Drive, east of Lundahl Lane, south of Ramsey Road and west of Walker Ranch Road just east of the unincorporated city of Lake Riverside. Access to the site can be obtained directly through Lundahl Lane. Access throughout the site can be accomplished by four wheel drive vehicles on a established trail that runs east to west through the site and afoot in rocky-steep areas. The site is rectangle in shape, and is composed of one parcel totaling 19.55-acres. The approximate center of the site is located at:

State Plane Coordinates: 6421648E, 2117488N (NAD-83, feet)

UTM Coordinates: 527097E, 3704009N (NAD-27, meters)

Township / Range / Section: T8S, R3W, S18, Beauty Mountain Quad

1.B. APNs & Acreage:

APN	ACRES
579-430-002	19.55
TOTAL	19.55

1.C. Topography:

The majority of the property is comprised of moderately to steeply rolling hills with large rocks and boulders scattered throughout. Given the location, vegetation and topography of the site, the majority of the property is difficult to access.

1.D. Surrounding Land Use:

The site is surrounded by the natural open-space of the Lake Riverside/Cahuilla Indian Reservation area. Low-density housing can be found throughout the area, with many of the residences participating in equestrian and/or off-highway vehicle (OHV) activities.

2. BIOLOGICAL ASSESSMENT

2.A. Plant Communities:

The DeJesus property supports a dense chaparral plant community, mostly comprised of ribbonwood/redshank (*Adenostoma sparsifolium*) and common sagebrush (*Artemisia tridentata*).

In disturbed areas, vegetation changes to non-native annual grasses (e.g. *Bromus spp.*). The reason for the disturbance is not completely understood and may stem from the motorized vehicle activity along the dirt roads.

2.B. Likely Animal Species:

Given the natural open-space environment and lack of human encroachment, the likelihood of finding species associated with the present habitat is very high. Potential species could include: coyote (*Canis latrans*), bobcat (*Lynx rufus*), mountain lion (*Puma concolor*), mule deer (*Odocoileus hemionus*), spotted skunk (*Spilogale putorius*), woodrats (*Neotoma spp.*), various field mice (*Peromyscus spp.*), brush rabbit (*Sylvilagus bachmani*), side-blotched lizard (*Uta stansburiana*), western fence lizard (*Sceloporus occidentalis*), granite spiny lizard (*Sceloporus orcuttii*), coachwhip (*Masticophis flagellum*), southern Pacific rattlesnake (*Crotalus viridis*), and rosy boa (*Lichanura trivirgata*).

2.C. Other Habitat or Wildlife Features:

The presence of large boulders and rocky outcrops on-site may provide suitable roosting habitat for several bat species.

2.D. Target Species:

Please see Appendix A for a qualitative checklist of MSHCP target animal species, and Appendix B for plant species.

3. IMPACTS AND CURRENT CONDITIONS

3.A. Current Uses:

The DeJesus site is currently not being used and remains in a relatively natural open-space state. A trail runs through the property from east to west and appears to be seldomly used. Historic use of the site seems to have been minimal due to the natural condition of the site.

3.B. Fencing & Access Controls:

The site is currently not fenced. Given the remoteness of the site and lack of public use, extensive fencing will not be necessary unless OHV activity, illegal trash dumping and illegal shooting increases to a level that is detrimental to the habitat.

An access trail that runs through the middle of the property is the main access trail into the site. This access trail will need to be closed-off with a gate or fence to limit access into the site.

3.C. Off-Road Vehicle (OHV) Use / Damage:

Established OHV trails do exist on-site and fencing concerns may need to be addressed if OHV use is shown to have adverse impacts within the DeJesus property.

3.D. Illegal Dumping:

No illegal dumping was noticed to occur on-site, but does occur frequently within the area.

3.E. Target Shooting & Hunting:

The site is currently not being used for target shooting or hunting; however, they do occur within surrounding properties.

3.F. Weed Abatement:

No weed abatement activities are currently required on this site.

3.G. Other Recreational Opportunities and Constraints:

With proper management and funding, opportunities could exist in the future for hiking, nature study, equestrian use, aesthetics and solitude.

3.H. Special Conditions of Purchase:

None Reported.

4. RESTORATION OPPORTUNITIES

4.A. Target Species:

Since the majority of the site is in relatively pristine condition, little restoration concerns exists. The only restoration activity suitable for the DeJesus property would be to control the non-native grass patches on-site; which may lead to the re-establishment of native plant species.

4.B. Multi-Species Aspects:

None required due to lack of restoration concerns.

5. RERSERVE DESIGN AND CONNECTIVITY

5.A. Boundary, Edge and Community Location:

Due to its size and few trails/access roads, the site supports a low degree of edge effects. The majority of the surrounding area is non-developed open-space land.

5.B. Connectivity:

The DeJesus property adds to the overall goal of preserving habitat and establishing different core areas while ultimately connecting them through corridors. The DeJesus property will help establish Proposed Core Area 6, which will help develop open-space land continuity towards the Palomar Mountains to the southwest, Anza-Borrego State Park and Reserve to the east and existing Core Area "L" to the south.

5.C. Nearby Existing Reserves:

JPR-Silverado, Walker, Santos and JPR-6 MSHCP properties are all located within a 1 mile radius of the DeJesus reserve.

The Walker and Santos property are directly adjacent to the DeJesus property. Collectively the three properties provide 189.11 acres of contiguous open-space habitat.

The Bureau of Land Management (BLM) owns land in the immediate area surrounding the DeJesus property to the north and east.

5.D. Priority for Future Purchases:

Priority should be given to acquire the parcels that exist between the Lake Skinner Reserve, Cordova/Wilson Valley site and the Odegard site due to the high probability that these open-space lands will undergo irreversible

development. The acquisitions of these critical parcels would help ensure the continuity of open-space within the Lake Skinner/Sage/San Jacinto corridor, in an area likely to be developed soon.

6. INTERIM MANAGEMENT

6.A. Public Issues:

The only public issue regarding the property is being able to prevent illegal hunting on the site. Given the hunting areas nearby, proper signage must be installed to deter legal hunters from hunting illegally within the conservation area. There are currently no signs of hunting activity within the DeJesus property.

6.B. Biological Issues:

Currently there are no biological issues. Future concerns may require species composition surveys to better understand the existing biology of the site. The results of the surveys will provide a better understanding of how to further manage the lands.

6.C. Recommended Interim Management Scenario:

- 1) Periodically monitor and inspect the site for possible new OHV trails and document any new disturbances to the land (e.g., trash, shotgun shells etc.).
- 2) Site visits by District Rangers and maintenance crews to establish rapport with the local residences and provide a presence to deter potential would-be trespassers.

7. MAPS – Appendix C.

8. SITE PHOTOGRAPHS – Appendix D.

COMMON NAME	SCIENTIFIC NAME	HABITAT	NOT PRESENT	NOT LIKELY PRESENT	POSSIBLY PRESENT	LIKELY PRESENT	CONFIRMED PRESENT
INVERTEBRATES							
RIVERSIDE FAIRY SHRIMP	<i>Streptocephalus woottoni</i>	Vernal Pool	✓				
SANTA ROSA PLATEAU FAIRY SHRIMP	<i>Linderiella santarosae</i>	Vernal Pool	✓				
VERNAL POOL FAIRY SHRIMP	<i>Branchinecta lynchi</i>	Vernal Pool	✓				
INSECTS							
QUINO CHECKERSPOT BUTTERFLY	<i>Euphydryas editha quino</i>	Sage Scrub		✓			
DELHI SANDS FLOWER-LOVING FLY	<i>Rhaphiomidas terminus abdominalis</i>	Delhi Sands	✓				
FISH							
ARROYO CHUB	<i>Gila orcuttii</i>	Aquatic	✓				
SANTA ANA SUCKER	<i>Catostomus santaanae</i>	Aquatic	✓				
AMPHIBIANS							
COAST RANGE NEWT	<i>Taricha torosa tarosa</i>	Riparian / Intermittant Streams		✓			
ARROYO TOAD	<i>Bufo californicus</i>	Riparian / Well-watered Streams	✓				
WESTERN SPADEFOOT TOAD	<i>Scaphiopus hammondi</i>	Temp. Pools / Surrounding Uplands		✓			
CALIFORNIA RED-LEGGED FROG	<i>Rana aurora draytonii</i>	Permanent Streams and Rivers	✓				
MOUNTAIN YELLOW-LEGGED FROG	<i>Rana mucosa</i>	Mountain Streams / Rivers / Lakes	✓				
REPTILES							
WESTERN POND TURTLE	<i>Clemmys marmorata pallida</i>	Aquatic	✓				
SAN DIEGO COAST HORNED LIZARD	<i>Phrynosoma coronatum blainvillii</i>	Sage Scrub / Grasslands			✓		
SOUTHERN SAGEBRUSH LIZARD	<i>Sceloporus graciosus vandenburgianus</i>				✓		
GRANITE SPINY LIZARD	<i>Sceloporus orcuttii</i>	Sage Scrub with Rocks			✓		
GRANITE NIGHT LIZARD	<i>Xantusia henshawi henshawi</i>	Rocky sage scrub & chaparral			✓		
ORANGE-THROATED WHIPTAIL	<i>Cnemidophorus hyperythrus beldingii</i>	Sage Scrub			✓		
SAN DIEGO BANDED GECKO	<i>Coleonyx variegatus abbottii</i>	Sage Scrub / Chaparral			✓		
SAN BERNARDINO MOUNTAIN KINGSSNAKE	<i>Lampropeltis zonata parviruba</i>	Upper Elev. Chaparral & Mountains	✓				
SAN DIEGO MOUNTAIN KINGSSNAKE	<i>Lampropeltis zonata pulchra</i>	Upper Elev. Chaparral & Mountains		✓			
SOUTHERN RUBBER BOA	<i>Charina bottae umbratica</i>	Mountains		✓			
NORTHERN RED DIAMOND RATTLESNAKE	<i>Crotalus ruber ruber</i>	Sage Scrub / Chaparral			✓		
BIRDS							
DOUBLE-CRESTED CORMORANT	<i>Phalacrocorax auritus</i>	Aquatic	✓				
AMERICAN BITTERN	<i>Botaurus lentiginosus</i>	Marsh	✓				
GREAT BLUE HERON	<i>Ardea herodias</i>	Waterways & Surrounding Areas	✓				
BLACK-CROWNED NIGHT HERON	<i>Nycticorax nycticorax</i>	Waterways & Surrounding Areas	✓				
WHITE-FACED IBIS	<i>Plegadis chihi</i>	Waterways & Surrounding Areas	✓				
MOUNTAIN PLOVER	<i>Charadrius montanus</i>	Waterways & Surrounding Areas	✓				
TURKEY VULTURE	<i>Carthartes aura</i>	Cosmopolitan				✓	
GOLDEN EAGLE	<i>Aquila chrysaetos</i>	Cosmopolitan			✓		
BALD EAGLE	<i>Haliaeetus leucocephalus</i>	Lakes	✓				
WHITE-TAILED KITE	<i>Elanus leucurus</i>	Brushy Grassland		✓			
NORTHERN HARRIER	<i>Circus cyaneus</i>	Brushy Grassland		✓			
SHARP-SHINNED HAWK	<i>Accipiter striatus</i>	Woodlands & Surrounding Areas		✓			
COOPER'S HAWK	<i>Accipiter cooperii</i>	Woodlands & Surrounding Areas		✓			
NORTHERN GOSHAWK	<i>Accipiter gentilis</i>	Mountains		✓			
SWAINSON'S HAWK	<i>Buteo swainsoni</i>	Open Country		✓			
FERRUGINOUS HAWK	<i>Buteo regalis</i>	Open Country			✓		
OSPREY	<i>Pandion haliaetus</i>	Lakes	✓				
MERLIN	<i>Falco columbarius</i>	Open Woods & Surrounding Areas		✓			
PRAIRIE FALCON	<i>Falco mexicanus</i>	Open Country		✓			
PEREGRINE FALCON	<i>Falco peregrinus</i>	Open Country Near Wetlands		✓			
MOUNTAIN QUAIL	<i>Oreortyx pictus</i>	Mountains			✓		
WESTERN YELLOW-BILLED CUCKOO	<i>Coccyzus americanus occidentalis</i>	Riparian	✓				
CALIFORNIA SPOTTED OWL	<i>Stryx occidentalis occidentalis</i>	Mountains	✓				
BURROWING OWL	<i>Athene cunicularia hypugaea</i>	Open Country		✓			
BLACK SWIFT	<i>Cypseloides niger</i>	Cliffs Near Water	✓				
WILLIAMSON'S SAPSUCKER	<i>Sphyrapicus thyroideus</i>	Mountains	✓				

DOWNY WOODPECKER	<i>Picoides pubescens</i>	Areas With Trees	✓				
SOUTHWESTERN WILLOW FLYCATCHER	<i>Empidonax traillie extimus</i>	Riparian		✓			
CALIFORNIA HORNED LARK	<i>Eremophila alpestris acta</i>	Open Grasslands & Sage Scrub		✓			
TREE SWALLOW	<i>Tachycineta bicolor</i>	Wooded Areas Near Water	✓				
PURPLE MARTIN	<i>Progne subis</i>	Open Country		✓			
CACTUS WREN	<i>Campylorhynchus brunneicapillus</i>	Sage Scrub With Cactus		✓			
COASTAL CALIFORNIA GNATCATCHER	<i>Poliopitila californica californica</i>	Sage Scrub		✓			
LOGGERHEAD SHRIKE	<i>Lanius lucovicianus</i>	Cosmopolitan				✓	
LEAST BELL'S VIREO	<i>Vireo bellii pusillus</i>	Extensive Riparian	✓				
NASHVILLE WARBLER	<i>Vermivora ruficapilla</i>	Riparian	✓				
YELLOW WARBLER	<i>Dendroica petechia brewsteri</i>	Riparian	✓				
McGILLIVRAY'S WARBLER	<i>Oporornis tolmiei</i>	Riparian	✓				
WILSON'S WARBLER	<i>Wilsonia pusilla</i>	Riparian	✓				
YELLOW-BREASTED CHAT	<i>Icteria virens</i>	Riparian	✓				
GRASSHOPPER SPARROW	<i>Ammodramus savannarum</i>	Grasslands		✓			
BELL'S SAGE SPARROW	<i>Amphispiza belli belli</i>	Chaparral				✓	
SO. CAL. RUFOUS-CROWNED SPARROW	<i>Aimophila ruficeps canescens</i>	Sage Scrub / Chaparral Slopes				✓	
LINCOLN'S SPARROW	<i>Melospiza lincolni</i>	Mountain Bogs & Meadows	✓				
TRICOLORED BLACKBIRD	<i>Agelaius tricolor</i>	Marsh	✓				
MAMMALS							
BOBCAT	<i>Lynx rufus</i>	Cosmopolitan					✓
MOUNTAIN LION	<i>Felis concolor</i>	Remote Mountainous Areas				✓	
LONG-TAILED WEASEL	<i>Mustela frenata</i>	Open Country				✓	
COYOTE	<i>Canis latrans</i>	Cosmopolitan					✓
BRUSH RABBIT	<i>Sylvilagus bachmani</i>	Chaparral					✓
SAN DIEGO BLACK-TAILED JACKRABBIT	<i>Lepus californicus bennettii</i>	Open Country				✓	
LOS ANGELES POCKET MOUSE	<i>Perognathus longimembris brevisus</i>	Streambeds & Sandy Areas		✓			
NORTHWESTERN SAN DIEGO POCKET MOUSE	<i>Chaetodipus fallax fallax</i>	Sage Scrub / Chaparral					✓
AGUNAGA KANGAROO RAT	<i>Dipodomys merriami collinus</i>	Sandy Areas Near Aguanga				✓	
SAN BERNARDINO KANGAROO RAT	<i>Dipodomys merriami parvus</i>	Sandy Areas / San Jacinto River	✓				
DELZURA KANGAROO RAT	<i>Dipodomys simulans</i>	Sage Scrub / Chaparral				✓	
STEPHENS' KANGAROO RAT	<i>Dipodomys stephensi</i>	Open Country				✓	
SAN DIEGO DESERT WOODRAT	<i>Neotoma lepida intermedia</i>	Sage Scrub / Chaparral					✓
SAN BERNARDINO FLYING SQUIRREL	<i>Glaucomys sabrinus californicus</i>	Mountains	✓				

APPENDIX B.
Target Plant Species

COMMON NAME	SCIENTIFIC NAME	HABITAT(S)	GENERAL LOCATIONS	NOT PRESENT	NOT LIKELY PRESENT	POSSIBLY PRESENT	LIKELY PRESENT	CONFIRMED PRESENT
beautiful hulsea	<i>Hulsea vestita</i> var. <i>callicarpa</i>	Mid-level mountains	SJMTS	✓				
Brand's phacelia	<i>Phacelia stellaris</i>	Sandy benches	SARIV		✓			
California beardtongue	<i>Penstemon californicus</i>	Mid-level mountains	SJMTS, DVA, SRP		✓			
California bedstraw	<i>Galium californicum</i> var. <i>primum</i>	Upper elevation chaparral	SJMTS, DVA, San Timoteo			✓		
California black walnut	<i>Juglans californica</i> var. <i>californica</i>	Streams	SRP, Pedley		✓			
California muhly	<i>Muhlenbergia californica</i>	Riparian / seeps	Sage area, Prado area, GAV, TEM		✓			
California Orcutt grass	<i>Orcuttia californica</i>	Vernal pools	SALT, SRP, SKUNK	✓				
chickweed oxytheca	<i>Oxytheca caryophylloides</i>	Mountains	SJMTS		✓			
Cleveland's bush monkeyflower	<i>Mimulus clevelandii</i>	Upper elevation chaparral	SAMTS			✓		
cliff cinquefoil	<i>Potentilla rimicola</i>	High elevation rocks	SJMTS		✓			
Coulter's goldfields	<i>Lasthenia glabrata</i> var. <i>coulteri</i>	Alkali vernal plains	SJVAL, Perris Valley, Nichols Rd.	✓				
Coulter's matilija poppy	<i>Romneya coulteri</i>	Dry washes and canyons	GAV, TEM			✓		
Davidson's saltscale	<i>Atriplex sereana</i> var. <i>davidsonii</i>	Alkali vernal plains and pools	SJVAL, Perris Valley, Nichols Rd.	✓				
Englemann oak	<i>Quercus engelmannii</i>	Mesic fans and slopes	SRP, SAMTS, GAV		✓			
Fish's mildwort	<i>Polygala cornuta</i> var. <i>fishiae</i>	Oak riparian woodlands	SRP, SAMTS, Temecula area		✓			
graceful tarplant	<i>Holocarpa virgata</i> <i>elongata</i>	Level grasslands and shrublands	SRP		✓			
Hall's monardella	<i>Monardella macrantha</i> var. <i>hallii</i>	Mountain foothills, dry slopes, ridges	SAMTS, Pine Cove area			✓		
Hammitt's clay-cress	<i>Sibaropsis hammittii</i>	Clay grasslands	SAMTS		✓			
heart-leaved pitcher plant	<i>Lepechinia cardiophylla</i>	Forests	SAMTS	✓				
intermediate mariposa lily	<i>Calochortus weedii</i> var. <i>intermedius</i>	Dry rocky slopes in SS / CHAP, burned areas	SAMTS, DVA, VAIL			✓		
Jaegar's milk-vetch	<i>Astragalus pachypus</i> var. <i>jaegeri</i>	Dry areas	VAIL, Agunaga area, Protrero area			✓		
Johnston's rock cress	<i>Arabis johnstonii</i>	Upper elevation chaparral, forests	SJMTS		✓			
lemon lily	<i>Lilium parryi</i>	Mountain wet places	SJMTS		✓			
little mousetail	<i>Myosaurus minimum</i> <i>apus</i>	Vernal pools, alkali sinks	SALT, SRP, GAV, MARB		✓			
long-spined spine flower	<i>Chorizanthe polygonoides</i> var. <i>longispina</i>	Rocky clay soils	GAV, TEM, SAMTS, SRP		✓			
many-stemmed dudleya	<i>Dudleya multicaulis</i>	Rocky clay soils, outcrops	GAV, TEM			✓		
Mojave tarplant	<i>Deinandra</i> [<i>Hemizonia</i>] <i>mohavensis</i>	Clay or silty streams	SJMTS and foothills		✓			
mud nama	<i>Nama stenocarpum</i>	Marshes	SJRIV near Gilman	✓				
Munz's mariposa lily	<i>Calochortus palmeri</i> var. <i>munzii</i>	Mountains, chaparral	SJMTS			✓		
Munz's onion	<i>Allium munzii</i>	Clay soils in SS / CHAP / Grasslands	GAV, TEM, SAMTS, SKUNK, SKIN			✓		
Nevin's barberry	<i>Berberis nevinii</i>	Course soils in chaparral	Varies			✓		
ocellated Humboldt lily	<i>Lilium humboldtii</i> <i>ocellatum</i>	Mountain riparian	SAMTS, Palomar Mts.		✓			
Orcutt's brodiaea	<i>Brodiaea orcuttii</i>	Mesic grasslands and pools	SRP		✓			
Palmer's grapplehook	<i>Harpagonella palmeri</i>	Clay soils in SS / CHAP / Grasslands	varies			✓		
Palomar monkeyflower	<i>Mimulus diffusus</i>	Sandy soils in upper elev. CHAP, forests	SAMTS, SJMTS			✓		
Parish's brittlescale	<i>Atriplex parishii</i>	Alkaine soils	SALT, lower SJRIV		✓			
Parish's meadowfoam	<i>Limnanthes gracilis</i> var. <i>parishii</i>	Ephemeral wetlands	SRP	✓				

APPENDIX B.
Target Plant Species

Parry's spine flower	<i>Chorizanthe parryi</i> var. <i>parryi</i>	Alluvial scrub	Varies		✓			
Payson'r jewelflower	<i>Caulanthus simulans</i>	Pinyon-Juniper, chaparral, sage scrub	Agunaga area			✓		
peninsular spine flower	<i>Chorizanthe leptotheca</i>	Dry open areas	Varies			✓		
Plummer's mariposa lily	<i>Calochortus plummerae</i>	Varies	SJMTS, Jurupa Hills			✓		
prostrate navarretia	<i>Navarretia prostrata</i>	Sage scrub, vernal pools, grasslands	SRP			✓		
prostrate spine flower	<i>Chorizanthe procumbrens</i>	Sandy openings in CHAP / SS	SAMTS			✓		
Rainbow manzanita	<i>Arctostaphylos rainbowensis</i>	Iron rich soils in chaparral	SRP, GAV, TEM, Wildomar area			✓		
round-leaved filaree	<i>Erodium macrophyllum</i>	Grasslands	GAV, DVA, TEM		✓			
San Diego ambrosia	<i>Ambrosia pumila</i>	Grasslands	Alberhill, Lake Street, SKUNK		✓			
San Diego button-celery	<i>Eryngium aristulatum</i> var. <i>parishii</i>	Vernal pools	SRP	✓				
San Jacinto Mountains bedstraw	<i>Galium angustifolium jacinticum</i>	Forests	SJMTS	✓				
San Jacinto Valley crownscale	<i>Atriplex coronatum</i> var. <i>notatior</i>	Floodplains	MYSTIC, SALT	✓				
San Miguel savory	<i>Satureja chandleri</i>	Varies	SRP				✓	
Santa Ana River woollystar	<i>Eriastrum densifolium sanctorum</i>	Alluvial scrub (immature)	SARIV		✓			
shaggy-haired alumroot	<i>Heuchera hirsutissima</i>	Forests	SJMTS	✓				
slender-horned spine flower	<i>Dodecahema leptoceras</i>	Alluvial scrub (mature)	Indian Creek, VAIL area		✓			
small-flowered microserius	<i>Microserius douglasii</i> var. <i>platycarpa</i>	Clay foothills and grasslands	SRP, Bachelor Mt. area		✓			
small-flowered morning-glory	<i>Convolvulus simulans</i>	Clay and serpentine soils in grasslands	Varies		✓			
smooth tarplant	<i>Centromadia pungens</i> (<i>Hemizonia pungens laevis</i>)	Varies	Varies				✓	
spreading navarretia	<i>Navarretia fossalis</i>	Vernal pools and ditches	SALT, SJRIV	✓				
sticky-leaved dudleya	<i>Dudleya viscida</i>	Rocky canyon slopes	SAMTS		✓			
thread-leaved brodiaea	<i>Brodiaea filifolia</i>	Alkali pools, mesic grasslands	SJRIV, SALT, SRP	✓				
Vail Lake ceanothus	<i>Ceanothus ophiochilus</i>	Dry ridgetops in chaparral	VAIL area				✓	
vernal barley	<i>Hordeum intercedens</i>	Vernal pools and mesic grasslands	SALT, SJRIV	✓				
Wright's trichocoronis	<i>Trichocoronis wrightii</i> var. <i>wrightii</i>	Alkali vernal pools and flats	SJRIV, MYSTIC	✓				
Yucaipa onion	<i>Allium marvinii</i>	Clay soils in chaparral	Beaumont area				✓	

APPENDIX C. SITE MAP
DeJESUS PROPERTY
RC22000022



DeJESUS PROPERTY



SANTOS PROPERTY



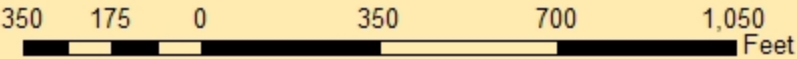
WALKER PROPERTY



BUREAU OF LAND MANAGEMENT



POTENTIAL FENCE OR GATE SITE

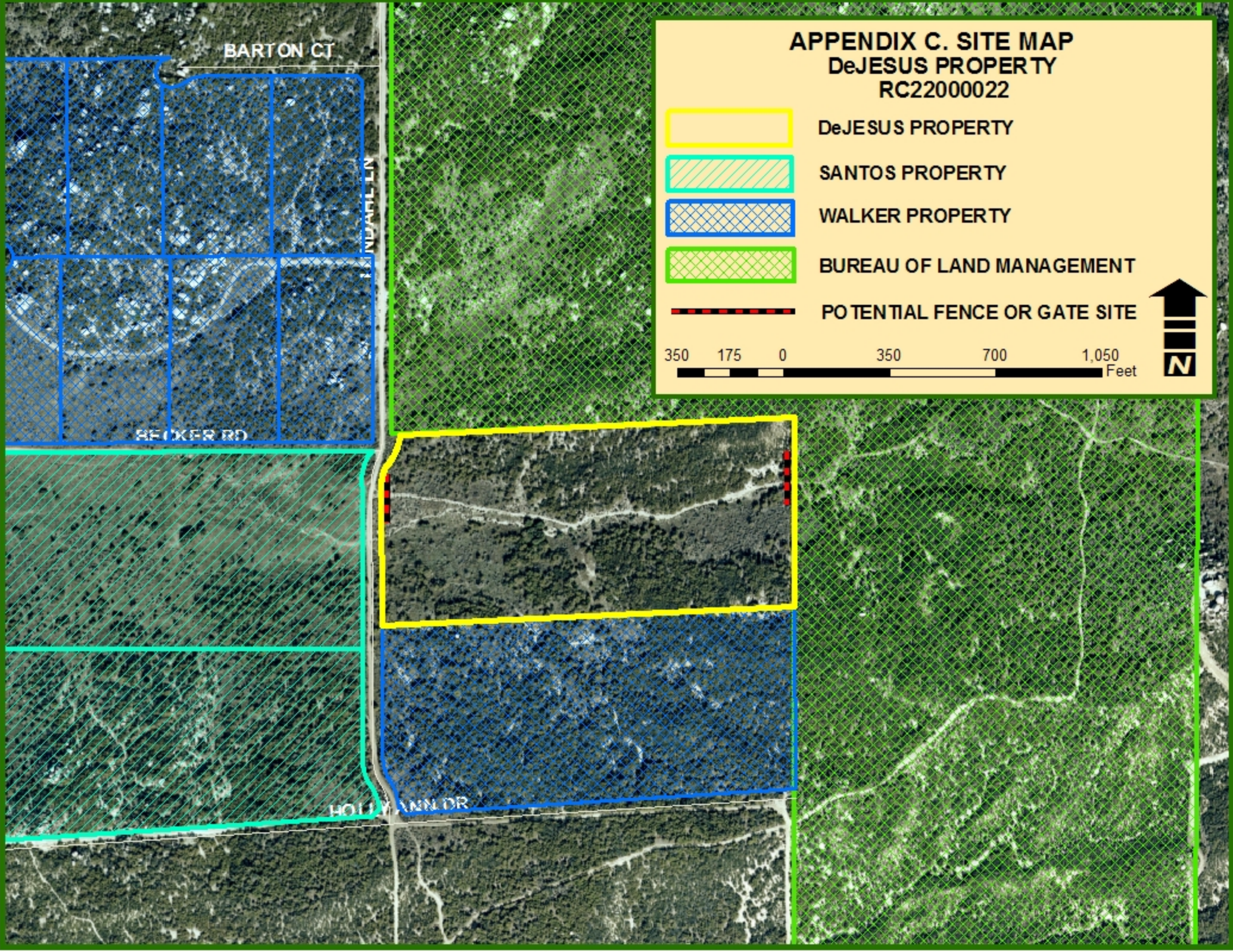


BARTON CT

INDIAN LN

BECKER RD

HOLLY ANN DR



APPENDIX D.



Western border looking east.



Western border looking north.

APPENDIX D.



Western border looking south.



Middle of property looking into stand of redshank (*Adenostoma sparsifolium*).