

**INITIAL MANAGEMENT EVALUATION & RECOMMENDATIONS REPORT  
(IMER)**

**For**

**GENTRY PROPERTY**



**Prepared by  
Natural Resources Management Section  
Riverside County Parks**

**March, 2007**

**Riverside County  
Multi-Species Habitat Conservation Plan  
Initial Management Evaluation and Recommendations  
Habitat Management Unit: Menifee**

RESERVE NAME: MEN 1  
ACQUISITION NAME: GENTRY  
PROJECT ID NUMBER: RC22200002

---

**I. SITE PHYSICAL DESCRIPTION**

**1.A. Site Physical Location & Access:**

The Gentry site is located east of Los Alamos Road, south of Shea Lane, north of Shannon Lane, and within of the City of Murrieta. Access to the site can be obtained directly through a dirt road north of Shannon lane. Access throughout the site can be done by non-four wheel drive vehicles on roads that run along the border of the site and afoot in the rocky-steep areas. The site is “L” shaped, and composed of one parcel totaling 30.00-acres. The approximate center of the site is located at:

State Plane Coordinates: 6285888E, 2158786N (NAD-83, feet)

UTM Coordinates: 485671E, 3716300N (NAD-27, meters)

Township / Range / Section: T7S, R3W, S2, Murrieta Quad

**1.B. APNs & Acreage:**

<b>APN</b>	<b>ACRES</b>
956-040-026	30.00
<b>TOTAL</b>	<b>30.00</b>

**1.C. Topography:**

The majority of the property is comprised of gently to steeply rolling hills with a lowland flat area near the middle of the site. A fairly large mountain and ridgeline is located in the southern section of the site.

### **1.D. Surrounding Land Use:**

The site is surrounded by low-density rural housing found throughout the area. Many of the surrounding residences participate in equestrian and/or off-highway vehicle (OHV) activities. The parcel southwest of the site is currently being used for agriculture.

## **2. BIOLOGICAL ASSESSMENT**

### **2.A. Plant Communities:**

The site is located in an area that does not experience relatively frequent wildfires. As a result, the majority of the site supports a mixed chaparral/coast sage scrub plant community. Shrub species observed include: chamise (*Adenostoma fasciculatum*), California sagebrush (*Artemisia californica*), California buckwheat (*Eriogonum fasciculatum*), bush monkeyflower (*Mimulus longiflorus*), and bush sunflower (*Encelia californica*).

### **2.B. Likely Animal Species:**

Given the development and human encroachment to the surrounding area, the likelihood of species associated with the mixed chaparral/coast sage scrub habitat using the site is a likely possibility. These species could include: mountain lion (*Felis concolor*), bobcat (*Lynx rufus*), coyote (*Canis latrans*), long-tailed weasel (*Mustela frenata*), spotted skunk (*Spilogale putorius*), bats (several species), brush rabbit (*Sylvilagus bachmani*), southern Pacific rattlesnake (*Crotalus viridis*), California whipsnake (*Masticophis lateralis*), Baja California lyresnake (*Trimorphodon biscutatus lyrophanes*), coachwhip (*Masticophis flagellum*), rosy boa (*Lichanura trivirgata*), southern sagebrush lizard (*Sceloporus graciosus vandenburgianus*), side-blotched lizard (*Uta stansburiana*), San Diego horned lizard (*Phrynosoma coronatum blainvellerii*), red-tailed hawk (*Buteo jamaicensis*), black phoebe (*Sayornis nigricans*), California thrasher (*Toxostoma redivivum*), California towhee (*Pipilo fuscus*), speckled towhee (*Pipilo erythrophthalmus*), wrentit (*Chamaea fasciata*), California quail (*Callipepla californica*), and mourning dove (*Zenaida macroura*).

### **2.C. Other Habitat or Wildlife Features:**

The flat low-land grass area, which separates a chamise-dominant and California buckwheat-dominant area, may provide foraging habitat for several species of raptors that may utilize this site, and may support several rodent species including heteromydids.

### **2.D. Target Species:**

Please see Appendix A for a qualitative checklist of MSHCP target animal species, and Appendix B for plant species.

### **3. IMPACTS AND CURRENT CONDITIONS**

#### **3.A. Current Uses:**

Limited OHV activities can be seen throughout the site. No other current land use can be deduced from field observations.

#### **3.B. Fencing & Access Controls:**

Main access to the site can be gained through a dirt road stemming from Los Alamos Road just north of Shannon Road. Illegal use of the site seems to be infrequent judging by the relatively low amount of damage observed on the site. Fencing and access controls will need to be implemented when the frequency of illegal use increases to a point to where it may adversely effect the habitat of the site, especially on the western border that follows Los Alamos Road.

#### **3.C. Off-Road Vehicle (OHV) Use / Damage:**

One established OHV trail exists on-site and fencing may need to be done if OHV use is shown to have adverse impacts within the conservation area. The location of the OHV trail is just east of Los Alamos Road and follows the road north to south. Equestrian activities have also been observed to take place on this trail. It is expected that the current trail will not have any adverse impacts to the rest of the conservation area.

#### **3.D. Illegal Dumping:**

Illegal dumping has been documented within the site; however, the occurrence is minimal, centralized and not recent. This trash has already been removed by staff.

#### **3.E. Target Shooting & Hunting**

The site is currently not being used for target shooting or hunting to any applicable degree.

#### **3.F. Weed Abatement:::**

No weed abatement activities are currently required on this site. Weed abatement will need to be done if the grassland area grows to unacceptable levels.

#### **3.G. Other Recreational Opportunities and Constraints:**

With proper management, funding, and connections to other sites opportunities could exist in the future for: hiking, nature study, mountain biking, equestrian use, aesthetics and solitude.

**3.H. Special Conditions of Purchase:**

None Reported.

**4. RESTORATION OPPORTUNITIES**

**4.A. Target Species:**

Given potential species composition, the non-native grassland may need to be restored to coast sage scrub habitat if it will not have adverse impacts to current, native resident species.

**4.B. Multi-Species Aspects:**

None required.

**5. RESERVE DESIGN AND CONNECTIVITY**

**5.A. Boundary, Edge and Community Location:**

Due to its polygonal shape and large open area with sparse plant density, the site supports a high degree of edge.

**5.B. Connectivity:**

The Gentry site represents a key “stepping stone” acquisition in the establishment of the corridor between the Gentry and the Hall and Allen properties. It also forms a nexus with the Center for Natural Lands Management (CNLM) properties at Warm Springs Reserve and Lincoln Ranch.

**5.C. Nearby Existing Reserves:**

The Allen, Hall and the Warm Springs Reserve are located approximately a ¼ mile south of the Gentry site.

**5.D. Priority for Future Purchases:**

Priority should be given to acquire the parcels that exist between the Gentry site and the Hall reserve due to the high probability that these open-space lands may undergo irreversible development. The acquisitions of these critical parcels would help ensure the continuity of open-space within the immediate area, which hopefully will lead to further acquisitions that may connect the properties to the Lake Skinner/Diamond Valley Lake Reserve in the east.

## **6. INTERIM MANAGEMENT**

### **6.A. Public Issues:**

No public issues are foreseen concerning this site.

### **6.B. Biological Issues:**

Currently there are no biological management issues. Future concerns may require species composition surveys to better understand the existing biology of the site. The results of the surveys will provide a better understanding of how to correctly manage the lands by being as species-specific as possible.

### **6.C. Recommended Interim Management Scenario:**

- 1) Periodically monitor and inspect the site for possible new OHV trails and to determine if the frequency of visitors is increasing by documenting any new disturbances to the land (e.g., trash, shotgun shells, etc.). Fence if necessary.
- 2) Site visits by County Rangers and maintenance crews should try to establish rapport with the local residences, and provide a presence to deter potential would-be trespassers.
- 3) Post low-key signs that identify RCA ownership and on-site restrictions.
- 4) Maintain signs that surround the site.

## **7. MAPS – Appendix C.**

## **8. SITE PHOTOGRAPHS – Appendix D.**

COMMON NAME	SCIENTIFIC NAME	HABITAT	NOT PRESENT	NOT LIKELY PRESENT	POSSIBLY PRESENT	LIKELY PRESENT	CONFIRMED PRESENT
<b>INVERTEBRATES</b>							
RIVERSIDE FAIRY SHRIMP	<i>Streptocephalus woottoni</i>	Vernal Pool		✓			
SANTA ROSA PLATEAU FAIRY SHRIMP	<i>Linderiella santarosae</i>	Vernal Pool		✓			
VERNAL POOL FAIRY SHRIMP	<i>Branchinecta lynchi</i>	Vernal Pool		✓			
<b>INSECTS</b>							
QUINO CHECKERSPOT BUTTERFLY	<i>Euphydryas editha quino</i>	Sage Scrub			✓		
DELHI SANDS FLOWER-LOVING FLY	<i>Rhaphiomidas terminus abdominalis</i>	Delhi Sands	✓				
<b>FISH</b>							
ARROYO CHUB	<i>Gila orcuttii</i>	Aquatic	✓				
SANTA ANA SUCKER	<i>Catostomus santaanae</i>	Aquatic	✓				
<b>AMPHIBIANS</b>							
COAST RANGE NEWT	<i>Taricha torosa tarosa</i>	Riparian / Intermittant Streams	✓				
ARROYO TOAD	<i>Bufo californicus</i>	Riparian / Well-watered Streams	✓				
WESTERN SPADEFOOT TOAD	<i>Scaphiopus hammondi</i>	Temp. Pools / Surrounding Uplands			✓		
CALIFORNIA RED-LEGGED FROG	<i>Rana aurora draytonii</i>	Permanent Streams and Rivers	✓				
MOUNTAIN YELLOW-LEGGED FROG	<i>Rana mucosa</i>	Mountain Streams / Rivers / Lakes	✓				
<b>REPTILES</b>							
WESTERN POND TURTLE	<i>Clemmys marmorata pallida</i>	Aquatic	✓				
SAN DIEGO COAST HORNED LIZARD	<i>Phrynosoma coronatum blainvillii</i>	Sage Scrub / Grasslands			✓		
SOUTHERN SAGEBRUSH LIZARD	<i>Sceloporus graciosus vandenburgianus</i>			✓			
GRANITE SPINY LIZARD	<i>Sceloporus orcuttii</i>	Sage Scrub with Rocks		✓			
GRANITE NIGHT LIZARD	<i>Xantusia henshawi henshawi</i>	Rocky sage scrub & chaparral		✓			
ORANGE-THROATED WHIPTAIL	<i>Aspidoscelis hyperythra beldingii</i>	Sage Scrub / Chaparral			✓		
SAN DIEGO BANDED GECKO	<i>Coleonyx variegatus abbottii</i>	Sage Scrub / Chaparral			✓		
SAN BERNARDINO MOUNTAIN KINGSSNAKE	<i>Lampropeltis zonata parviruba</i>	Upper Elev. Chaparral & Mountains		✓			
SAN DIEGO MOUNTAIN KINGSSNAKE	<i>Lampropeltis zonata pulchra</i>	Upper Elev. Chaparral & Mountains		✓			
SOUTHERN RUBBER BOA	<i>Charina bottae umbratica</i>	Mountains	✓				
NORTHERN RED DIAMOND RATTLESNAKE	<i>Crotalus ruber ruber</i>	Sage Scrub / Chaparral			✓		
<b>BIRDS</b>							
DOUBLE-CRESTED CORMORANT	<i>Phalacrocorax auritus</i>	Aquatic	✓				
AMERICAN BITTERN	<i>Botaurus lentiginosus</i>	Marsh	✓				
GREAT BLUE HERON	<i>Ardea herodias</i>	Waterways & Surrounding Areas	✓				
BLACK-CROWNED NIGHT HERON	<i>Nycticorax nycticorax</i>	Waterways & Surrounding Areas	✓				
WHITE-FACED IBIS	<i>Plegadis chihi</i>	Waterways & Surrounding Areas	✓				
MOUNTAIN PLOVER	<i>Charadrius montanus</i>	Waterways & Surrounding Areas	✓				
TURKEY VULTURE	<i>Carthartes aura</i>	Cosmopolitan				✓	
GOLDEN EAGLE	<i>Aquila chrysaetos</i>	Cosmopolitan			✓		
BALD EAGLE	<i>Haliaeetus leucocephalus</i>	Lakes		✓			
WHITE-TAILED KITE	<i>Elanus leucurus</i>	Brushy Grassland			✓		
NORTHERN HARRIER	<i>Circus cyaneus</i>	Brushy Grassland			✓		
SHARP-SHINNED HAWK	<i>Accipiter striatus</i>	Woodlands & Surrounding Areas	✓				
COOPER'S HAWK	<i>Accipiter cooperii</i>	Woodlands & Surrounding Areas	✓				
NORTHERN GOSHAWK	<i>Accipiter gentilis</i>	Mountains	✓				
SWAINSON'S HAWK	<i>Buteo swainsoni</i>	Open Country		✓			
FERRUGINOUS HAWK	<i>Buteo regalis</i>	Open Country		✓			
OSPREY	<i>Pandion haliaetus</i>	Lakes	✓				
MERLIN	<i>Falco columbarius</i>	Open Woods & Surrounding Areas	✓				
PRAIRIE FALCON	<i>Falco mexicanus</i>	Open Country	✓				
PEREGRINE FALCON	<i>Falco peregrinus</i>	Open Country Near Wetlands		✓			
MOUNTAIN QUAIL	<i>Oreortyx pictus</i>	Mountains	✓				
WESTERN YELLOW-BILLED CUCKOO	<i>Coccyzus americanus occidentalis</i>	Riparian	✓				
CALIFORNIA SPOTTED OWL	<i>Stryx occidentalis occidentalis</i>	Mountains	✓				
BURROWING OWL	<i>Athene cunicularia hypugaea</i>	Open Country			✓		
BLACK SWIFT	<i>Cypseloides niger</i>	Cliffs Near Water	✓				
WILLIAMSON'S SAPSUCKER	<i>Sphyrapicus thyroideus</i>	Mountains	✓				

DOWNY WOODPECKER	<i>Picoides pubescens</i>	Areas With Trees	✓				
SOUTHWESTERN WILLOW FLYCATCHER	<i>Empidonax traillie extimus</i>	Riparian	✓				
CALIFORNIA HORNED LARK	<i>Eremophila alpestris acta</i>	Open Grasslands & Sage Scrub			✓		
TREE SWALLOW	<i>Tachycineta bicolor</i>	Wooded Areas Near Water	✓				
PURPLE MARTIN	<i>Progne subis</i>	Open Country		✓			
CACTUS WREN	<i>Campylorhynchus brunneicapillus</i>	Sage Scrub With Cactus		✓			
COASTAL CALIFORNIA GNATCATCHER	<i>Poliopitila californica californica</i>	Sage Scrub			✓		
LOGGERHEAD SHRIKE	<i>Lanius lucovicianus</i>	Cosmopolitan			✓		
LEAST BELL'S VIREO	<i>Vireo bellii pusillus</i>	Extensive Riparian	✓				
NASHVILLE WARBLER	<i>Vermivora ruficapilla</i>	Riparian	✓				
YELLOW WARBLER	<i>Dendroica petechia brewsteri</i>	Riparian	✓				
McGILLIVRAY'S WARBLER	<i>Oporornis tolmiei</i>	Riparian	✓				
WILSON'S WARBLER	<i>Wilsonia pusilla</i>	Riparian	✓				
YELLOW-BREASTED CHAT	<i>Icteria virens</i>	Riparian	✓				
GRASSHOPPER SPARROW	<i>Ammodramus savannarum</i>	Grasslands		✓			
BELL'S SAGE SPARROW	<i>Amphispiza belli belli</i>	Chaparral		✓			
SO. CAL. RUFOUS-CROWNED SPARROW	<i>Aimophila ruficeps canescens</i>	Sage Scrub / Chaparral Slopes			✓		
LINCOLN'S SPARROW	<i>Melospiza lincolni</i>	Mountain Bogs & Meadows	✓				
TRICOLORED BLACKBIRD	<i>Agelaius tricolor</i>	Marsh	✓				
<b>MAMMALS</b>							
BOBCAT	<i>Lynx rufus</i>	Cosmopolitan			✓		
MOUNTAIN LION	<i>Felis concolor</i>	Remote Mountainous Areas			✓		
LONG-TAILED WEASEL	<i>Mustela frenata</i>	Open Country			✓		
COYOTE	<i>Canis latrans</i>	Cosmopolitan				✓	
BRUSH RABBIT	<i>Sylvilagus bachmani</i>	Chaparral		✓			
SAN DIEGO BLACK-TAILED JACKRABBIT	<i>Lepus californicus bennettii</i>	Open Country			✓		
LOS ANGELES POCKET MOUSE	<i>Perognathus longimembris brevisianus</i>	Streambeds & Sandy Areas		✓			
NORTHWESTERN SAN DIEGO POCKET MOUSE	<i>Chaetodipus fallax fallax</i>	Sage Scrub / Chaparral			✓		
AGUNAGA KANGAROO RAT	<i>Dipodomys merriami collinus</i>	Sandy Areas Near Aguanga		✓			
SAN BERNARDINO KANGAROO RAT	<i>Dipodomys merriami parvus</i>	Sandy Areas / San Jacinto River	✓				
DELZURA KANGAROO RAT	<i>Dipodomys simulans</i>	Sage Scrub / Chaparral			✓		
STEPHENS' KANGAROO RAT	<i>Dipodomys stephensi</i>	Open Country			✓		
SAN DIEGO DESERT WOODRAT	<i>Neotoma lepida intermedia</i>	Sage Scrub / Chaparral			✓		
SAN BERNARDINO FLYING SQUIRREL	<i>Glaycomys sabrinus californicus</i>	Mountains	✓				

APPENDIX B.  
 Target Plant Species

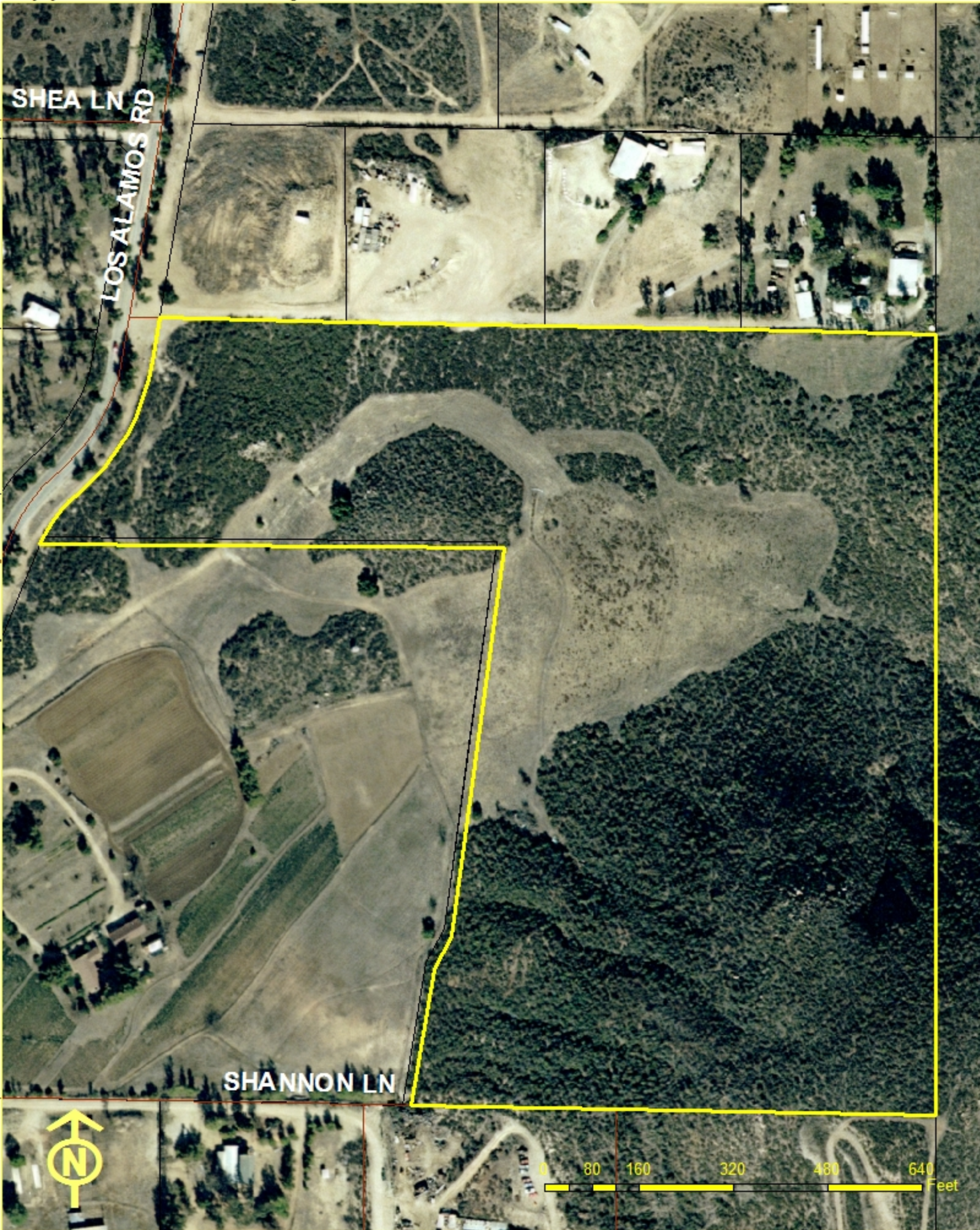
COMMON NAME	SCIENTIFIC NAME	HABITAT(S)	GENERAL LOCATIONS	NOT PRESENT	NOT LIKELY PRESENT	POSSIBLY PRESENT	LIKELY PRESENT	CONFIRMED PRESENT
beautiful hulsea	<i>Hulsea vestita</i> var. <i>callicarpa</i>	Mid-level mountains	SJMTS	✓	✓			
Brand's phacelia	<i>Phacelia stellaris</i>	Sandy benches	SARIV		✓			
California beardtongue	<i>Penstemon californicus</i>	Mid-level mountains	SJMTS, DVA, SRP		✓			
California bedstraw	<i>Galium californicum</i> var. <i>primum</i>	Upper elevation chaparral	SJMTS, DVA, San Timoteo		✓			
California black walnut	<i>Juglans californica</i> var. <i>californica</i>	Streams	SRP, Pedley		✓			
California muhly	<i>Muhlenbergia californica</i>	Riparian / seeps	Sage area, Prado area, GAV, TEM		✓			
California Orcutt grass	<i>Orcuttia californica</i>	Vernal pools	SALT, SRP, SKUNK			✓		
chickweed oxytheca	<i>Oxytheca caryophylloides</i>	Mountains	SJMTS		✓			
Cleveland's bush monkeyflower	<i>Mimulus clevelandii</i>	Upper elevation chaparral	SAMTS		✓			
cliff cinquefoil	<i>Potentilla rimicola</i>	High elevation rocks	SJMTS		✓			
Coulter's goldfields	<i>Lasthenia glabrata</i> var. <i>coulteri</i>	Alkali vernal plains	SJVAL, Perris Valley, Nichols Rd.		✓			
Coulter's matilija poppy	<i>Romneya coulteri</i>	Dry washes and canyons	GAV, TEM		✓			
Davidson's saltscale	<i>Atriplex sereana</i> var. <i>davidsonii</i>	Alkali vernal plains and pools	SJVAL, Perris Valley, Nichols Rd.		✓			
Englemann oak	<i>Quercus engelmannii</i>	Mesic fans and slopes	SRP, SAMTS, GAV		✓			
Fish's mildwort	<i>Polygala cornuta</i> var. <i>fishiae</i>	Oak riparian woodlands	SRP, SAMTS, Temecula area		✓			
graceful tarplant	<i>Holocarpa virgata</i> elongata	Level grasslands and shrublands	SRP			✓		
Hall's monardella	<i>Monardella macrantha</i> var. <i>hallii</i>	Mountain foothills, dry slopes, ridges	SAMTS, Pine Cove aera		✓			
Hammitt's clay-cress	<i>Sibaropsis hammitii</i>	Clay grasslands	SAMTS			✓		
heart-leaved pitcher plant	<i>Lepechinia cardiophylla</i>	Forests	SAMTS		✓			
intermediate mariposa lily	<i>Calochortus weedii</i> var. <i>intermedius</i>	Dry rocky slopes in SS / CHAP, burned areas	SAMTS, DVA, VAIL			✓		
Jaeger's milk-vetch	<i>Astragalus pachypus</i> var. <i>jaegeri</i>	Dry areas	VAIL, Agunaga area, Protrero area			✓		
Johnston's rock cress	<i>Arabis johnstonii</i>	Upper elevation chaparral, forests	SJMTS		✓			
lemon lily	<i>Lilium parryi</i>	Mountain wet places	SJMTS		✓			
little mousetail	<i>Myosaurus minimum</i> apus	Vernal pools, alkali sinks	SALT, SRP, GAV, MARB			✓		
long-spined spine flower	<i>Chorizanthe polygonoides</i> var. <i>longispina</i>	Rocky clay soils	GAV, TEM, SAMTS, SRP		✓			
many-stemmed dudleya	<i>Dudleya multicaulis</i>	Rocky clay soils, outcrops	GAV, TEM		✓			
Mojave tarplant	<i>Deinandra</i> [Hemizonia] <i>mohavensis</i>	Clay or silty streams	SJMTS and foothills		✓			
mud nama	<i>Nama stenocarpum</i>	Marshes	SJRIV near Gilman		✓			
Munz's mariposa lily	<i>Calochortus palmeri</i> var. <i>munzii</i>	Mountains, chaparral	SJMTS			✓		
Munz's onion	<i>Allium munzii</i>	Clay soils in SS / CHAP / Grasslands	GAV, TEM, SAMTS, SKUNK, SKIN			✓		
Nevin'a barberry	<i>Berberis nevinii</i>	Course soils in chaparral	Varies			✓		
ocellated Humboldt lily	<i>Lilium humboldtii</i> ocellatum	Mountain riparian	SAMTS, Palomar Mts.		✓			
Orcutt's brodiaea	<i>Brodiaea orcuttii</i>	Mesic grasslands and pools	SRP			✓		
Palmer's grapplinghook	<i>Harpagonella palmeri</i>	Clay soils in SS / CHAP / Grasslands	varies			✓		
Palomar monkeyflower	<i>Mimulus diffusus</i>	Sandy soils in upper elev. CHAP, forests	SAMTS, SJMTS			✓		
Parish's brittlescale	<i>Atriplex parishii</i>	Alkaine soils	SALT, lower SJRIV		✓			
Parish's meadowfoam	<i>Limnanthes gracilis</i> var. <i>parishii</i>	Ephemeral wetlands	SRP		✓			
Parry's spine flower	<i>Chorizanthe parryi</i> var. <i>parryi</i>	Alluvial scrub	Varies		✓			
Payson'r jewelflower	<i>Caulanthus simulans</i>	Pinyon-Juniper, chaparral, sage scrub	Agunaga area		✓			
peninsular spine flower	<i>Chorizanthe leptotheca</i>	Dry open areas	Varies			✓		

<b>Plummer's mariposa lily</b>	<i>Calochortus plummerae</i>	Varies	SJMTS, Jurupa Hills		✓			
<b>prostrate navarretia</b>	<i>Navarretia prostrata</i>	Sage scrub, vernal pools, grasslands	SRP			✓		
<b>prostrate spine flower</b>	<i>Chorizanthe procumbrens</i>	Sandy openings in CHAP / SS	SAMTS			✓		

APPENDIX B.  
 Target Plant Species

<b>Rainbow manzanita</b>	<i>Arctostaphylos rainbowensis</i>	Iron rich soils in chaparral	SRP, GAV, TEM, Wildomar area			✓		
<b>round-leaved filaree</b>	<i>Erodium macrophyllum</i>	Grasslands	GAV, DVA, TEM			✓		
<b>San Diego ambrosia</b>	<i>Ambrosia pumila</i>	Grasslands	Alberhill, Lake Street, SKUNK			✓		
<b>San Diego button-celery</b>	<i>Eryngium aristulatum</i> var. <i>parishii</i>	Vernal pools	SRP			✓		
<b>San Jacinto Mountains bedstraw</b>	<i>Galium angustifolium jacinticum</i>	Forests	SJMTS		✓			
<b>San Jacinto Valley crownscale</b>	<i>Atriplex coronatum</i> var. <i>notatior</i>	Floodplains	MYSTIC, SALT		✓			
<b>San Miguel savory</b>	<i>Satureja chandleri</i>	Varies	SRP			✓		
<b>Santa Ana River woollystar</b>	<i>Eriastrum densifolium sanctorum</i>	Alluvial scrub (immature)	SARIV		✓			
<b>shaggy-haired alumroot</b>	<i>Heuchera hirsutissima</i>	Forests	SJMTS		✓			
<b>slender-horned spine flower</b>	<i>Dodecahema leptoceras</i>	Alluvial scrub (mature)	Indian Creek, VAIL area		✓			
<b>small-flowered microserius</b>	<i>Microserius douglasii</i> var. <i>platycarpa</i>	Clay foothills and grasslands	SRP, Bachelor Mt. area			✓		
<b>small-flowered morning-glory</b>	<i>Convolvulus simulans</i>	Clay and serpentine soils in grasslands	Varies			✓		
<b>smooth tarplant</b>	<i>Centromadia pungens</i> ( <i>Hemizonia pungens laevis</i> )	Varies	Varies			✓		
<b>spreading navarretia</b>	<i>Navarretia fossalis</i>	Vernal pools and ditches	SALT, SJRIV			✓		
<b>sticky-leaved dudleya</b>	<i>Dudleya viscida</i>	Rocky canyon slopes	SAMTS		✓			
<b>thread-leaved brodiaea</b>	<i>Brodiaea filifolia</i>	Alkali pools, mesic grasslands	SJRIV, SALT, SRP			✓		
<b>Vail Lake ceanothus</b>	<i>Ceanothus ophiocilius</i>	Dry ridgetops in chaparral	VAIL area			✓		
<b>vernal barley</b>	<i>Hordeum intercedens</i>	Vernal pools and mesic grasslands	SALT, SJRIV			✓		
<b>Wright's trichocoronis</b>	<i>Trichocoronis wrightii</i> var. <i>wrightii</i>	Alkali vernal pools and flats	SJRIV, MYSTIC			✓		
<b>Yucaipa onion</b>	<i>Allium marvinii</i>	Clay soils in chaparral	Beaumont area			✓		

# Appendix C - Gentry Reserve



## APPENDIX D. GENTRY SITE PHOTOS



Northern border looking south.



OHV trail on western border looking north.

## APPENDIX D. GENTRY SITE PHOTOS



Western border looking southeast.



Boulders to prevent OHV access on trail. Chamise/California buckwheat ecotone in background.

## APPENDIX D. GENTRY SITE PHOTOS



OHV tire marks through boulders on trail.



West looking east across site.

## APPENDIX D. GENTRY SITE PHOTOS



Previous illegal dumping on-site, clean-up of trash completed.