

**INITIAL MANAGEMENT EVALUATION & RECOMMENDATIONS REPORT  
(IMER)**

**For**

**JPR INC. 6 PROPERTY**



**Prepared by  
Natural Resources Management Section  
Riverside County Parks**

**April, 2007**

**Riverside County  
Multi-Species Habitat Conservation Plan  
Initial Management Evaluation and Recommendations  
Habitat Management Unit: Sage**

RESERVE NAME: **SAGE 3**  
ACQUISITION NAME: JPR INC. (6)  
PROJECT ID NUMBER: RC22000056

---

**1. SITE PHYSICAL DESCRIPTION**

**1.A. Site Physical Location & Access:**

The JPR-6 site is located north of Bowers Road, east of Howard Road, south of Tizon and west of Walker Ranch Road just east of the unincorporated city of Lake Riverside. Access to the site can be obtained directly through Bowers Road, which serves as the southern border of the property. Access throughout the site can be accomplished by non-four wheel drive vehicles on established trails and afoot in rocky-steep areas. The site is rectangle in shape, and is composed of one parcel totaling 321.5-acres. The approximate center of the site is located at:

State Plane Coordinates: 6420936E, 2121575N (NAD-83, feet)

UTM Coordinates: 526917E, 3705247N (NAD-27, meters)

Township / Range / Section: T8S, R3W, S7, Beauty Mountain Quad

**1.B. APNs & Acreage:**

<b>APN</b>	<b>ACRES</b>
579-020-010	321.5
<b>TOTAL</b>	<b>321.5</b>

**1.C. Topography:**

The majority of the property is comprised of moderately to steeply rolling hills with rocks and boulders scattered throughout. There are several distinct ridges within the property boundary.

**1.D. Surrounding Land Use:**

The site is surrounded by the natural open-space of the Lake Riverside/Cahuilla Indian Reservation area. Low-density housing can be found throughout the area,

with many of the residences participating in equestrian and/or off-highway vehicle (OHV) activities.

## **2. BIOLOGICAL ASSESSMENT**

### **2.A. Plant Communities:**

The majority of the site supports a mixture of coast sage-scrub and chaparral plant communities. Plant species documented to occur on-site include: red shank/ribbon wood (*Adenostoma sparsifolium*), mountain mahogany (*Cercocarpus betuloides*), ceanothus (*Ceanothus spp.*), deer weed (*Lotus scoparius*), wild oat (*Avena fatua*), sugar bush (*Rhus ovata*) and California buckwheat (*Eriogonum fasciculatum*).

In disturbed areas, species composition changes to non-native annual grasses (e.g. *Bromus spp.*) and short-pod mustard (*Hirschfeldia incana*).

### **2.B. Likely Animal Species:**

Given the natural open-space environment and lack of human encroachment the likelihood of finding species associated with the habitat on-site is very likely. These species could include: mountain lion (*Felis concolor*), bobcat (*Lynx rufus*), coyote (*Canis latrans*), spotted skunk (*Spilogale putorius*), bats (more than one genus and species), brush rabbit (*Sylvilagus bachmani*), San Diego black-tailed jackrabbit (*Lepus californicus bennettii*), Stephen's kangaroo rat (*Dipodomys stephensi*), southern Pacific rattlesnake (*Crotalus viridis*), California whipsnake (*Masticophis lateralis*), Baja California lyresnake (*Trimorphodon biscutatus lyrophanes*), orange-throated whiptail (*Aspidoscelis hyperythra*), coachwhip (*Masticophis flagellum*), coast patch-nosed snake (*Salvadora hexalepis virgultea*), side-blotched lizard (*Uta stansburiana*), granite spiny lizard (*Sceloporus orcuttii*), San Diego coast horned lizard (*Phrynosoma coronatum blainvelli*), prairie falcon (*Falco mexicanus*), red-tailed hawk (*Buteo jamaicensis*), black phoebe (*Sayornis nigricans*), California thrasher (*Toxostoma redivivum*), California towhee (*Pipilo fuscus*), spotted towhee (*Pipilo maculatus*), wrentit (*Chamaea fasciata*), California quail (*Callipepla californica*), mourning dove (*Zenaida macroura*) and quino checkerspot butterfly (*Euphydryas editha quino*).

### **2.C. Other Habitat or Wildlife Features:**

The presence of large boulders and rocky outcrops on-site may provide suitable roosting habitat for several bat species.

### **2.D. Target Species:**

Please see Appendix A for a qualitative checklist of MSHCP target animal species, and Appendix B for plant species.

### **3. IMPACTS AND CURRENT CONDITIONS**

#### **3.A. Current Uses:**

The JPR-6 site is currently not being used and remains in a relatively natural open-space state. Historic use of the site seems to have been minimal due to the natural condition of the site.

#### **3.B. Fencing & Access Controls:**

The site is currently only partially fenced, but it seems that this is sufficient in limiting access to the site. Some of the fencing has been torn down and will need to be repaired. Given the remoteness of the site, extensive fencing will not be necessary unless OHV activity, illegal trash dumping and illegal shooting increases to a level that is detrimental to the habitat.

An access trail that starts south from Bowers Road and runs north is the main access trail into the site. This access trail has recently been closed-off with a field gate to limit access into the site. A similar field gate was installed near the southwestern corner of the site to prevent another access trail from forming in the future.

#### **3.C. Off-Road Vehicle (OHV) Use / Damage:**

Established OHV trails do exist on-site and fencing concerns may need to be addressed if OHV use is shown to have adverse impacts within the conservation area.

#### **3.D. Illegal Dumping:**

No illegal dumping was noticed to occur on-site.

#### **3.E. Target Shooting & Hunting:**

The site is currently not being used for target shooting or hunting; however, they do occur within surrounding properties.

#### **3.F. Weed Abatement:**

No weed abatement activities are currently required on this site.

#### **3.G. Other Recreational Opportunities and Constraints:**

With proper management and funding, opportunities could exist in the future for hiking, nature study, equestrian use, aesthetics and solitude.

#### **3.H. Special Conditions of Purchase:**

None Reported.

#### **4. RESTORATION OPPORTUNITIES**

##### **4.A. Target Species:**

Since the majority of the site is in relatively pristine condition, little restoration concerns exists. The only restoration activity suitable for the JPR-6 property would be to control the non-native grassland patches on-site; which may lead to the re-establishment of native species found in the area.

##### **4.B. Multi-Species Aspects:**

None required due to lack of restoration concerns.

#### **5. RERSERVE DESIGN AND CONNECTIVITY**

##### **5.A. Boundary, Edge and Community Location:**

Due to its relatively large size and various trails/access roads, the site supports a medium degree of edge effects. The majority of the surrounding area is non-developed open-space land.

##### **5.B. Connectivity:**

JPR-6 property adds to the overall goal of preserving habitat and establishing different core areas while ultimately connecting them through corridors. The JPR-6 property will help establish Proposed Core Area 6, which will help develop open-space land continuity towards the Palomar Mountains to the southwest, Anza-Borrego State Park and Reserve to the east and existing Core Area "L" to the south.

##### **5.C. Nearby Existing Reserves:**

JPR-Silverado, Walker, Santos and DeJesus MSHCP properties are all located within a 1 mile radius of the JPR-6 reserve.

##### **5.D. Priority for Future Purchases:**

Priority should be given to acquire the parcels that exist between the Lake Skinner Reserve, Cordova/Wilson Valley site and the Odegaard site due to the high probability that these open-space lands will undergo irreversible development. The acquisitions of these critical parcels would help ensure the continuity of open-space within the Lake Skinner/Sage/San Jacinto corridor, in an area likely to be developed soon.

## **6. INTERIM MANAGEMENT**

### **6.A. Public Issues:**

The only public issue regarding the reserve is being able to prevent illegal hunting on the site. Given the hunting areas nearby, proper signage must be installed to deter legal hunters from hunting illegally within the conservation area. There are currently no signs of hunting activity within the JPR-6 property.

### **6.B. Biological Issues:**

Currently there are no biological issues. Future concerns may require species composition surveys to better understand the existing biology of the site. The results of the surveys will provide a better understanding of how to further manage the lands.

### **6.C. Recommended Interim Management Scenario:**

- 1) Periodically monitor and inspect the site for possible new OHV trails and document any new disturbances to the land (e.g., trash, shotgun shells etc.).
- 2) Site visits by District rangers and maintenance crews to establish rapport with the local residences and provide a presence to deter potential would-be trespassers.
- 3) Post low-key signs that identify county ownership and on-site restrictions.
- 4) Maintain fencing and signs that surround the site and install new fences where old fences are dilapidated.

## **7. MAPS – Appendix C.**

## **8. SITE PHOTOGRAPHS – Appendix D.**

COMMON NAME	SCIENTIFIC NAME	HABITAT	NOT PRESENT	NOT LIKELY PRESENT	POSSIBLY PRESENT	LIKELY PRESENT	CONFIRMED PRESENT
<b>INVERTEBRATES</b>							
RIVERSIDE FAIRY SHRIMP	<i>Streptocephalus woottoni</i>	Vernal Pool	✓				
SANTA ROSA PLATEAU FAIRY SHRIMP	<i>Linderiella santarosae</i>	Vernal Pool	✓				
VERNAL POOL FAIRY SHRIMP	<i>Branchinecta lynchi</i>	Vernal Pool	✓				
<b>INSECTS</b>							
QUINO CHECKERSPOT BUTTERFLY	<i>Euphydryas editha quino</i>	Sage Scrub				✓	
DELHI SANDS FLOWER-LOVING FLY	<i>Rhaphiomidas terminus abdominalis</i>	Delhi Sands	✓				
<b>FISH</b>							
ARROYO CHUB	<i>Gila orcuttii</i>	Aquatic	✓				
SANTA ANA SUCKER	<i>Catostomus santaanae</i>	Aquatic	✓				
<b>AMPHIBIANS</b>							
COAST RANGE NEWT	<i>Taricha torosa tarosa</i>	Riparian / Intermittant Streams		✓			
ARROYO TOAD	<i>Bufo californicus</i>	Riparian / Well-watered Streams		✓			
WESTERN SPADEFOOT TOAD	<i>Scaphiopus hammondi</i>	Temp. Pools / Surrounding Uplands		✓			
CALIFORNIA RED-LEGGED FROG	<i>Rana aurora draytonii</i>	Permanent Streams and Rivers		✓			
MOUNTAIN YELLOW-LEGGED FROG	<i>Rana mucosa</i>	Mountain Streams / Rivers / Lakes		✓			
<b>REPTILES</b>							
WESTERN POND TURTLE	<i>Clemmys marmorata pallida</i>	Aquatic	✓				
SAN DIEGO COAST HORNED LIZARD	<i>Phrynosoma coronatum blainvillii</i>	Sage Scrub / Grasslands			✓		
SOUTHERN SAGEBRUSH LIZARD	<i>Sceloporus graciosus vandenburgianus</i>				✓		
GRANITE SPINY LIZARD	<i>Sceloporus orcuttii</i>	Sage Scrub with Rocks			✓		
GRANITE NIGHT LIZARD	<i>Xantusia henshawi henshawi</i>	Rocky sage scrub & chaparral			✓		
ORANGE-THROATED WHIPTAIL	<i>Cnemidophorus hyperythrus beldingii</i>	Sage Scrub			✓		
SAN DIEGO BANDED GECKO	<i>Coleonyx variegatus abbottii</i>	Sage Scrub / Chaparral			✓		
SAN BERNARDINO MOUNTAIN KINGSSNAKE	<i>Lampropeltis zonata parviruba</i>	Upper Elev. Chaparral & Mountains		✓			
SAN DIEGO MOUNTAIN KINGSSNAKE	<i>Lampropeltis zonata pulchra</i>	Upper Elev. Chaparral & Mountains		✓			
SOUTHERN RUBBER BOA	<i>Charina bottae umbratica</i>	Mountains	✓				
NORTHERN RED DIAMOND RATTLESNAKE	<i>Crotalus ruber ruber</i>	Sage Scrub / Chaparral				✓	
<b>BIRDS</b>							
DOUBLE-CRESTED CORMORANT	<i>Phalacrocorax auritus</i>	Aquatic	✓				
AMERICAN BITTERN	<i>Botaurus lentiginosus</i>	Marsh	✓				
GREAT BLUE HERON	<i>Ardea herodias</i>	Waterways & Surrounding Areas	✓				
BLACK-CROWNED NIGHT HERON	<i>Nycticorax nycticorax</i>	Waterways & Surrounding Areas	✓				
WHITE-FACED IBIS	<i>Plegadis chihi</i>	Waterways & Surrounding Areas	✓				
MOUNTAIN PLOVER	<i>Charadrius montanus</i>	Waterways & Surrounding Areas	✓				
TURKEY VULTURE	<i>Carthartes aura</i>	Cosmopolitan				✓	
GOLDEN EAGLE	<i>Aquila chrysaetos</i>	Cosmopolitan			✓		
BALD EAGLE	<i>Haliaeetus leucocephalus</i>	Lakes		✓			
WHITE-TAILED KITE	<i>Elanus leucurus</i>	Brushy Grassland			✓		
NORTHERN HARRIER	<i>Circus cyaneus</i>	Brushy Grassland			✓		
SHARP-SHINNED HAWK	<i>Accipiter striatus</i>	Woodlands & Surrounding Areas			✓		
COOPER'S HAWK	<i>Accipiter cooperii</i>	Woodlands & Surrounding Areas			✓		
NORTHERN GOSHAWK	<i>Accipiter gentilis</i>	Mountains		✓			
SWAINSON'S HAWK	<i>Buteo swainsoni</i>	Open Country		✓			
FERRUGINOUS HAWK	<i>Buteo regalis</i>	Open Country			✓		
OSPREY	<i>Pandion haliaetus</i>	Lakes	✓				
MERLIN	<i>Falco columbarius</i>	Open Woods & Surrounding Areas		✓			
PRAIRIE FALCON	<i>Falco mexicanus</i>	Open Country		✓			
PEREGRINE FALCON	<i>Falco peregrinus</i>	Open Country Near Wetlands		✓			
MOUNTAIN QUAIL	<i>Oreortyx pictus</i>	Mountains		✓			
WESTERN YELLOW-BILLED CUCKOO	<i>Coccyzus americanus occidentalis</i>	Riparian	✓				
CALIFORNIA SPOTTED OWL	<i>Stryx occidentalis occidentalis</i>	Mountains	✓				
BURROWING OWL	<i>Athene cunicularia hypugaea</i>	Open Country			✓		
BLACK SWIFT	<i>Cypseloides niger</i>	Cliffs Near Water		✓			
WILLIAMSON'S SAPSUCKER	<i>Sphyrapicus thyroideus</i>	Mountains	✓				

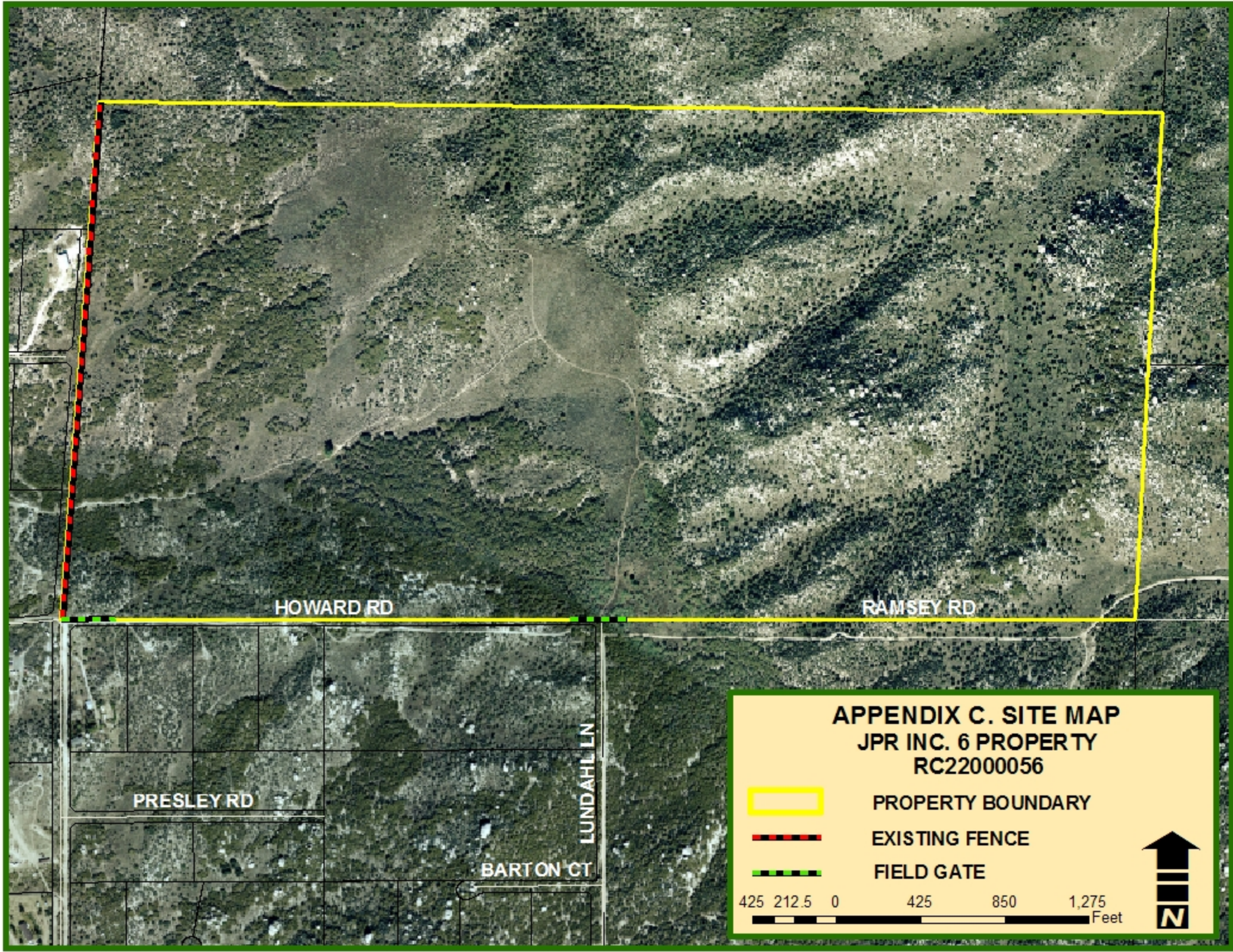
DOWNY WOODPECKER	<i>Picoides pubescens</i>	Areas With Trees	✓				
SOUTHWESTERN WILLOW FLYCATCHER	<i>Empidonax traillie extimus</i>	Riparian	✓				
CALIFORNIA HORNED LARK	<i>Eremophila alpestris acta</i>	Open Grasslands & Sage Scrub			✓		
TREE SWALLOW	<i>Tachycineta bicolor</i>	Wooded Areas Near Water		✓			
PURPLE MARTIN	<i>Progne subis</i>	Open Country			✓		
CACTUS WREN	<i>Campylorhynchus brunneicapillus</i>	Sage Scrub With Cactus		✓			
COASTAL CALIFORNIA GNATCATCHER	<i>Poliophtila californica californica</i>	Sage Scrub			✓		
LOGGERHEAD SHRIKE	<i>Lanius lucovicianus</i>	Cosmopolitan			✓		
LEAST BELL'S VIREO	<i>Vireo bellii pusillus</i>	Extensive Riparian	✓				
NASHVILLE WARBLER	<i>Vermivora ruficapilla</i>	Riparian		✓			
YELLOW WARBLER	<i>Dendroica petechia brewsteri</i>	Riparian		✓			
McGILLIVRAY'S WARBLER	<i>Oporomis tolmiei</i>	Riparian		✓			
WILSON'S WARBLER	<i>Wilsonia pusilla</i>	Riparian		✓			
YELLOW-BREASTED CHAT	<i>Icteria virens</i>	Riparian		✓			
GRASSHOPPER SPARROW	<i>Ammodramus savannarum</i>	Grasslands			✓		
BELL'S SAGE SPARROW	<i>Amphispiza bellii bellii</i>	Chaparral				✓	
SO. CAL. RUFOUS-CROWNED SPARROW	<i>Aimophila ruficeps canescens</i>	Sage Scrub / Chaparral Slopes				✓	
LINCOLN'S SPARROW	<i>Melospiza lincolni</i>	Mountain Bogs & Meadows		✓			
TRICOLORED BLACKBIRD	<i>Agelaius tricolor</i>	Marsh	✓				
<b>MAMMALS</b>							
BOBCAT	<i>Lynx rufus</i>	Cosmopolitan				✓	
MOUNTAIN LION	<i>Felis concolor</i>	Remote Mountainous Areas				✓	
LONG-TAILED WEASEL	<i>Mustela frenata</i>	Open Country			✓		
COYOTE	<i>Canis latrans</i>	Cosmopolitan				✓	
BRUSH RABBIT	<i>Sylvilagus bachmani</i>	Chaparral				✓	
SAN DIEGO BLACK-TAILED JACKRABBIT	<i>Lepus californicus bennettii</i>	Open Country			✓		
LOS ANGELES POCKET MOUSE	<i>Perognathus longimembris brevisus</i>	Streambeds & Sandy Areas		✓			
NORTHWESTERN SAN DIEGO POCKET MOUSE	<i>Chaetodipus fallax fallax</i>	Sage Scrub / Chaparral				✓	
AGUNAGA KANGAROO RAT	<i>Dipodomys merriami collinus</i>	Sandy Areas Near Aguanga			✓		
SAN BERNARDINO KANGAROO RAT	<i>Dipodomys merriami parvus</i>	Sandy Areas / San Jacinto River			✓		
DELZURA KANGAROO RAT	<i>Dipodomys simulans</i>	Sage Scrub / Chaparral			✓		
STEPHENS' KANGAROO RAT	<i>Dipodomys stephensi</i>	Open Country			✓		
SAN DIEGO DESERT WOODRAT	<i>Neotoma lepida intermedia</i>	Sage Scrub / Chaparral			✓		
SAN BERNARDINO FLYING SQUIRREL	<i>Glaucomys sabrinus californicus</i>	Mountains	✓				

APPENDIX B.  
Target Plant Species

COMMON NAME	SCIENTIFIC NAME	HABITAT(S)	GENERAL LOCATIONS	NOT PRESENT	NOT LIKELY PRESENT	POSSIBLY PRESENT	LIKELY PRESENT	CONFIRMED PRESENT
beautiful hulsea	<i>Hulsea vestita</i> var. <i>callicarpa</i>	Mid-level mountains	SJMTS		✓			
Brand's phacelia	<i>Phacelia stellaris</i>	Sandy benches	SARIV		✓			
California beardtongue	<i>Penstemon californicus</i>	Mid-level mountains	SJMTS, DVA, SRP			✓		
California bedstraw	<i>Galium californicum</i> var. <i>primum</i>	Upper elevation chaparral	SJMTS, DVA, San Timoteo			✓		
California black walnut	<i>Juglans californica</i> var. <i>californica</i>	Streams	SRP, Pedley		✓			
California muhly	<i>Muhlenbergia californica</i>	Riparian / seeps	Sage area, Prado area, GAV, TEM		✓			
California Orcutt grass	<i>Orcuttia californica</i>	Vernal pools	SALT, SRP, SKUNK		✓			
chickweed oxytheca	<i>Oxytheca caryophylloides</i>	Mountains	SJMTS		✓			
Cleveland's bush monkeyflower	<i>Mimulus clevelandii</i>	Upper elevation chaparral	SAMTS			✓		
cliff cinquefoil	<i>Potentilla rimicola</i>	High elevation rocks	SJMTS		✓			
Coulter's goldfields	<i>Lasthenia glabrata</i> var. <i>coulteri</i>	Alkali vernal plains	SJVAL, Perris Valley, Nichols Rd.		✓			
Coulter's matilija poppy	<i>Romneya coulteri</i>	Dry washes and canyons	GAV, TEM			✓		
Davidson's saltscale	<i>Atriplex sereana</i> var. <i> davidsonii</i>	Alkali vernal plains and pools	SJVAL, Perris Valley, Nichols Rd.		✓			
Englemann oak	<i>Quercus engelmannii</i>	Mesic fans and slopes	SRP, SAMTS, GAV		✓			
Fish's mildwort	<i>Polygala cornuta</i> var. <i>fishiae</i>	Oak riparian woodlands	SRP, SAMTS, Temecula area		✓			
graceful tarplant	<i>Holocarpa virgata</i> elongata	Level grasslands and shrublands	SRP			✓		
Hall's monardella	<i>Monardella macrantha</i> var. <i>hallii</i>	Mountain foothills, dry slopes, ridges	SAMTS, Pine Cove area			✓		
Hammitt's clay-cress	<i>Sibaropsis hammittii</i>	Clay grasslands	SAMTS		✓			
heart-leaved pitcher plant	<i>Lepechinia cardiophylla</i>	Forests	SAMTS		✓			
intermediate mariposa lily	<i>Calochortus weedii</i> var. <i>intermedius</i>	Dry rocky slopes in SS / CHAP, burned areas	SAMTS, DVA, VAIL			✓		
Jaeger's milk-vetch	<i>Astragalus pachypus</i> var. <i>jaegeri</i>	Dry areas	VAIL, Agunaga area, Protrero area			✓		
Johnston's rock cress	<i>Arabis johnstonii</i>	Upper elevation chaparral, forests	SJMTS			✓		
lemon lily	<i>Lilium parryi</i>	Mountain wet places	SJMTS		✓			
little mouseltail	<i>Myosaurus minimum</i> apus	Vernal pools, alkali sinks	SALT, SRP, GAV, MARB		✓			
long-spined spine flower	<i>Chorizanthe polygonoides</i> var. <i>longispina</i>	Rocky clay soils	GAV, TEM, SAMTS, SRP		✓			
many-stemmed dudleya	<i>Dudleya multicaulis</i>	Rocky clay soils, outcrops	GAV, TEM		✓			
Mojave tarplant	<i>Deinandra</i> [Hemizonia] <i>mohavensis</i>	Clay or silty streams	SJMTS and foothills			✓		
mud nama	<i>Nama stenocarpum</i>	Marshes	SJRIV near Gilman		✓			
Munz's mariposa lily	<i>Calochortus palmeri</i> var. <i>munzii</i>	Mountains, chaparral	SJMTS			✓		
Munz's onion	<i>Allium munzii</i>	Clay soils in SS / CHAP / Grasslands	GAV, TEM, SAMTS, SKUNK, SKIN			✓		
Nevin'a barberry	<i>Berberis nevinii</i>	Course soils in chaparral	Varies			✓		
ocellated Humboldt lily	<i>Lilium humboldtii</i> ocellatum	Mountain riparian	SAMTS, Palomar Mts.		✓			
Orcutt's brodiaea	<i>Brodiaea orcuttii</i>	Mesic grasslands and pools	SRP			✓		
Palmer's grapplinghook	<i>Harpagonella palmeri</i>	Clay soils in SS / CHAP / Grasslands	varies			✓		
Palomar monkeyflower	<i>Mimulus diffusus</i>	Sandy soils in upper elev. CHAP, forests	SAMTS, SJMTS			✓		
Parish's brittlescale	<i>Atriplex parishii</i>	Alkaine soils	SALT, lower SJRIV		✓			
Parish's meadowfoam	<i>Limnanthes gracilis</i> var. <i>parishii</i>	Ephemeral wetlands	SRP		✓			

APPENDIX B.  
 Target Plant Species

<b>Parry's spine flower</b>	<i>Chorizanthe parryi var. parryi</i>	Alluvial scrub	Varies		✓			
<b>Payson'r jewelflower</b>	<i>Caulanthus simulans</i>	Pinyon-Juniper, chaparral, sage scrub	Agunaga area			✓		
<b>peninsular spine flower</b>	<i>Chorizanthe leptotheca</i>	Dry open areas	Varies			✓		
<b>Plummer's mariposa lily</b>	<i>Calochortus plummerae</i>	Varies	SJMTS, Jurupa Hills			✓		
<b>prostrate navarretia</b>	<i>Navarretia prostrata</i>	Sage scrub, vernal pools, grasslands	SRP			✓		
<b>prostrate spine flower</b>	<i>Chorizanthe procumbrens</i>	Sandy openings in CHAP / SS	SAMTS			✓		
<b>Rainbow manzanita</b>	<i>Arctostaphylos rainbowensis</i>	Iron rich soils in chaparral	SRP, GAV, TEM, Wildomar area			✓		
<b>round-leaved filaree</b>	<i>Erodium macrophyllum</i>	Grasslands	GAV, DVA, TEM			✓		
<b>San Diego ambrosia</b>	<i>Ambrosia pumila</i>	Grasslands	Alberhill, Lake Street, SKUNK			✓		
<b>San Diego button-celery</b>	<i>Eryngium aristulatum var. parishii</i>	Vernal pools	SRP		✓			
<b>San Jacinto Mountains bedstraw</b>	<i>Galium angustifolium jacinticum</i>	Forests	SJMTS		✓			
<b>San Jacinto Valley crownscale</b>	<i>Atriplex coronatum var. notatior</i>	Floodplains	MYSTIC, SALT		✓			
<b>San Miguel savory</b>	<i>Satureja chandleri</i>	Varies	SRP			✓		
<b>Santa Ana River woollystar</b>	<i>Eriastrum densifolium sanctorum</i>	Alluvial scrub (immature)	SARIV		✓			
<b>shaggy-haired alumroot</b>	<i>Heuchera hirsutissima</i>	Forests	SJMTS		✓			
<b>slender-horned spine flower</b>	<i>Dodecahema leptoceras</i>	Alluvial scrub (mature)	Indian Creek, VAIL area			✓		
<b>small-flowered microserius</b>	<i>Microserius douglasii var. platycarpha</i>	Clay foothills and grasslands	SRP, Bachelor Mt. area			✓		
<b>small-flowered morning-glory</b>	<i>Convolvulus simulans</i>	Clay and serpentine soils in grasslands	Varies			✓		
<b>smooth tarplant</b>	<i>Centromadia pungens (Hemizonia pungens laevis)</i>	Varies	Varies			✓		
<b>spreading navarretia</b>	<i>Navarretia fossalis</i>	Vernal pools and ditches	SALT, SJRIV			✓		
<b>sticky-leaved dudleya</b>	<i>Dudleya viscida</i>	Rocky canyon slopes	SAMTS			✓		
<b>thread-leaved brodiaea</b>	<i>Brodiaea filifolia</i>	Alkali pools, mesic grasslands	SJRIV, SALT, SRP			✓		
<b>Vail Lake ceanothus</b>	<i>Ceanothus ophiocilius</i>	Dry ridgetops in chaparral	VAIL area			✓		
<b>vernal barley</b>	<i>Hordeum intercedens</i>	Vernal pools and mesic grasslands	SALT, SJRIV		✓			
<b>Wright's trichocoronis</b>	<i>Trichocoronis wrightii var. wrightii</i>	Alkali vernal pools and flats	SJRIV, MYSTIC		✓			
<b>Yucaipa onion</b>	<i>Allium marvinii</i>	Clay soils in chaparral	Beaumont area			✓		



HOWARD RD




RAMSEY RD

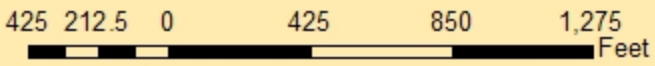
PRESLEY RD

BARTON CT

LUNDAHL LN

**APPENDIX C. SITE MAP  
JPR INC. 6 PROPERTY  
RC22000056**

-  PROPERTY BOUNDARY
-  EXISTING FENCE
-  FIELD GATE



APPENDIX D.



JPR Inc. 6 Site Photo



JPR Inc. 6 Site Photo

APPENDIX D.



JPR Inc. 6 Site Photo



JPR Inc. 6 Site Photo

APPENDIX D.



JPR Inc. 6 Site Photo



JPR Inc. 6 Site Photo