

**INITIAL MANAGEMENT EVALUATION REPORT  
(IMER)**

**For**

**KIANG PROPERTY**



**Prepared by  
Natural Resources Management Section  
Riverside County Parks**

**January, 2009**

**Riverside County  
Multi-Species Habitat Conservation Plan  
Initial Management Evaluation Report  
Habitat Management Unit: Sage**

RESERVE NAME: **SAGE 3**  
ACQUISITION NAME: KIANG  
PROJECT ID NUMBER: RC22000045

**1. SITE PHYSICAL DESCRIPTION**

**1.A. Site Physical Location & Access:**

The Kiang property consists of two separate parcels totaling 20.10 acres. From north to south they are: KIANG-A (APN 583-100-019), KIANG-B (APN 583-100-018). Both parcels lie east of Highway 371, south of Bergman Lane, west of Sycamore Falls Road and north of Chris Allen Way.

Both parcels can be accessed from Pete's Crossing which stems from Happy Valley Road. Pete's Crossing separates the two parcels into northern and southern halves.

The parcels' general locations are:

<b>KIANG</b>	<b>UTM (NAD-27, meters)</b>	<b>STATE PLANE (NAD-83, feet)</b>	<b>TOWNSHIP/RANGE/SECTION (Steele Peak Quad)</b>
<b>A</b>	<b>514338E 3702810N</b>	<b>6379726E 2113846N</b>	<b>T8S, R1E, Section 23, N1/4</b>
<b>B</b>	<b>514338E 3702701N</b>	<b>6379751E 2113492N</b>	<b>T8S, R1E, Section 23, N1/4</b>

**1.B. Acreage:**

Parcel A	10.32 Acres
Parcel B	9.78 Acres
<b>Total</b>	<b>20.10</b>

### **1.C. Topography:**

The majority of KIANG-A is comprised of moderately steep rolling hills with large rocks and boulders scattered throughout. Tule Creek runs east to west through KIANG-B, which is generally flatter, and establishes a nice riparian scrub corridor. Given the topography of the site, the majority of the property is easy to fully access.

### **1.D. Surrounding Land Use:**

The area surrounding the Kiang property generally supports natural open-space and some low-density housing, which primarily consists of single family ranchettes. A plant nursery is located to the north of KIANG-A. The majority of the surrounding residents participate in equestrian activities and some OHV activities.

## **2. BIOLOGICAL ASSESSMENT**

### **2.A. Plant Communities:**

The Kiang property supports a mixture of sage scrub and riparian scrub plant communities. Species identified during the initial site visit include common sagebrush (*Artemesia tridentata*), red maids (*Calandrinia ciliata*), California buckwheat (*Eriogonum fasciculatum*), chamise (*Adenostoma fasciculatum*), jojoba (*Simmondsia chinensis*), brittle brush (*Encelia farinosa*) and cholla (*Cylindropuntia spp.*) Species identified in the riparian area include willow (*Salix spp.*), mule fat (*Baccharis salicifolia*) and cottonwood (*Populus fremontii*).

In disturbed areas, species composition changes to non-native annual grasses (e.g., *Bromus spp.*).

### **2.B. Likely Animal Species:**

Given the natural open-space environment and lack of human encroachment, the likelihood of finding species associated with the present habitat is very high. Potential species could include: coyote (*Canis latrans*), bobcat (*Lynx rufus*), mountain lion (*Puma concolor*), mule deer (*Odocoileus hemionus*), spotted skunk (*Spilogale gracilus*), woodrats (*Neotoma spp.*), various field mice (*Peromyscus spp.*), brush rabbit (*Sylvilagus bachmani*), side-blotched lizard (*Uta stansburiana*), western fence lizard (*Sceloporus occidentalis*), granite spiny lizard (*Sceloporus orcuttii*), coachwhip (*Masticophis flagellum*), southern Pacific rattlesnake (*Crotalus viridis*), and rosy boa (*Lichanura trivirgata*).

**2.C. Other Habitat or Wildlife Features:**

The Kiang property adds important wildlife habitat to the southern section of County. The presence of significant rock outcrops and large boulders is considered suitable habitat for several bat species.

**2.D. Target Species:**

Please see Appendix A for a qualitative checklist of MSHCP target animal species, and Appendix B. for plant species.

**3. IMPACTS AND CURRENT CONDITIONS**

**3.A. Current Uses:**

The Kiang site is currently not being used and remains in a relatively natural open-space state. The only area of concern is near the neighboring property where the owner has placed a fence and outbuilding right on the property line. Historic use of the site seems to have been minimal based on the current natural condition of the site.

**3.B. Fencing & Access Controls:**

The Kiang property is currently not fenced. Gates and/or fencing will be needed to control the impacts within the western portion of Kiang-A. Problem areas that will require gates and/or fencing have been identified in Appendix C - Site Map.

**3.C. Off-Road Vehicle (OHV) Use / Damage:**

Although small, established OHV trails do exist on-site and fencing concerns will need to be addressed to minimize adverse impacts within the Kiang property.

**3.D. Illegal Dumping:**

No illegal dumping was noted in any of the parcels, but illegal dumping has been observed to occur within the area.

**3.E. Target Shooting & Hunting:**

The site is currently not being used for target shooting or hunting; however, such activities do occur within surrounding properties.

**3.F. Weed Abatement:**

Weeds along roadsides will most likely be removed through hand work and/or string trimmers. The neighbor to the south has, in the past, mowed the southern

boundary of the site for fire control. Mowing of the Non-native grasses should continue along this strip to minimize fuel load.

**3.G. Other Recreational Opportunities and Constraints:**

None.

**3.H. Special Conditions of Purchase:**

None reported.

**4. RESTORATION OPPORTUNITIES**

**4.A. Target Species:**

Currently, no restoration opportunities are needed or foreseen.

**4.B. Multi-Species Aspects:**

No aspects foreseen as long as the site remains pristine and there is no increase in human activity or wildfires.

**5. RERSERVE DESIGN AND CONNECTIVITY**

**5.A. Boundary, Edge and Community Location:**

Currently, low-density ranchettes are scattered around the property. Some edge effects are foreseen due to the small size of the property and that the property is bisected by a well traveled dirt road.

**5.B. Connectivity:**

Collectively, the acquired parcels add to the overall goal of preserving habitat and establishing different core areas while ultimately connecting them through corridors. The Kiang property will help establish Proposed Core Area 7, which will help develop open-space land continuity towards Proposed Core Area 4 to the north, Proposed Core Area 6 to the east, Existing Core L and M to the south and Existing Core J to the west.

**5.C. Nearby Existing Reserves:**

The Odegard, Gambill, Jalem, Bergman, United 5 Star Corp. (U5SC), Wilson Creek and Smith properties are all located within a 2 mile radius of the Kiang property.

#### **5.D. Priority for Future Purchases:**

Priority for future purchases should be given to those areas that will most likely be developed in the near future. The areas of most concern are found to the west of the Kiang property, where open-space land is being replaced with housing developments. If concerns are to purchase land in the immediate area, then the parcels between Kiang and the Odegaard, Gambill, Jalem, Bergman, U5SC, Wilson Creek and Smith properties should be a priority. These areas will establish continuity between the parcels and limit the chance of fragmentation from future development, while establishing MSHCP Proposed Core Area 7.

### **6. INTERIM MANAGEMENT**

#### **6.A. Public Issues:**

Given the remoteness of the site, and as the area grows, potential problems from OHV use may increase. Patrols should monitor this use to determine if this is occurring.

#### **6.B. Biological Issues:**

No biological issues are foreseen.

#### **6.C. Recommended Interim Management Scenario:**

- 1) Install fencing to block dirt roads going through Kiang-A. The boundary should also be signed with a moderately aggressive sign.
- 2) The Kiang property should be patrolled initially every week to determine any new impacts and the frequency of visitors. If no significant impacts occur, patrols could be relaxed to once a month.
- 3) Maintain fencing and signs as needed.

### **7. MAPS – Appendix C.**

### **8. SITE PHOTOGRAPHS – Appendix D.**

COMMON NAME	SCIENTIFIC NAME	HABITAT	NOT PRESENT	NOT LIKELY PRESENT	POSSIBLY PRESENT	LIKELY PRESENT	CONFIRMED PRESENT
<b>INVERTEBRATES</b>							
RIVERSIDE FAIRY SHRIMP	<i>Streptocephalus woottoni</i>	Vernal Pool	✓				
SANTA ROSA PLATEAU FAIRY SHRIMP	<i>Linderiella santarosae</i>	Vernal Pool	✓				
VERNAL POOL FAIRY SHRIMP	<i>Branchinecta lynchi</i>	Vernal Pool	✓				
<b>INSECTS</b>							
QUINO CHECKERSPOT BUTTERFLY	<i>Euphydryas editha quino</i>	Sage Scrub			✓		
DELHI SANDS FLOWER-LOVING FLY	<i>Rhaphiomidas terminus abdominalis</i>	Delhi Sands	✓				
<b>FISH</b>							
ARROYO CHUB	<i>Gila orcuttii</i>	Aquatic	✓				
SANTA ANA SUCKER	<i>Catostomus santaanae</i>	Aquatic	✓				
<b>AMPHIBIANS</b>							
COAST RANGE NEWT	<i>Taricha torosa tarosa</i>	Riparian / Intermittant Streams			✓		
ARROYO TOAD	<i>Bufo californicus</i>	Riparian / Well-watered Streams			✓		
WESTERN SPADEFOOT TOAD	<i>Scaphiopus hammondi</i>	Temp. Pools / Surrounding Uplands			✓		
CALIFORNIA RED-LEGGED FROG	<i>Rana aurora draytonii</i>	Permanent Streams and Rivers		✓			
MOUNTAIN YELLOW-LEGGED FROG	<i>Rana mucosa</i>	Mountain Streams / Rivers / Lakes	✓				
<b>REPTILES</b>							
WESTERN POND TURTLE	<i>Clemmys marmorata pallida</i>	Aquatic	✓				
SAN DIEGO COAST HORNED LIZARD	<i>Phrynosoma coronatum blainvillii</i>	Sage Scrub / Grasslands			✓		
SOUTHERN SAGEBRUSH LIZARD	<i>Sceloporus graciosus vandenburgianus</i>				✓		
GRANITE SPINY LIZARD	<i>Sceloporus orcuttii</i>	Sage Scrub with Rocks				✓	
GRANITE NIGHT LIZARD	<i>Xantusia henshawi henshawi</i>	Rocky sage scrub & chaparral			✓		
ORANGE-THROATED WHIPTAIL	<i>Cnemidophorus hyperythrus beldingii</i>	Sage Scrub				✓	
SAN DIEGO BANDED GECKO	<i>Coleonyx variegatus abbottii</i>	Sage Scrub / Chaparral			✓		
SAN BERNARDINO MOUNTAIN KINGSSNAKE	<i>Lampropeltis zonata parviruba</i>	Upper Elev. Chaparral & Mountains		✓			
SAN DIEGO MOUNTAIN KINGSSNAKE	<i>Lampropeltis zonata pulchra</i>	Upper Elev. Chaparral & Mountains		✓			
SOUTHERN RUBBER BOA	<i>Charina bottae umbratica</i>	Mountains	✓				
NORTHERN RED DIAMOND RATTLESNAKE	<i>Crotalus ruber ruber</i>	Sage Scrub / Chaparral				✓	
<b>BIRDS</b>							
DOUBLE-CRESTED CORMORANT	<i>Phalacrocorax auritus</i>	Aquatic	✓				
AMERICAN BITTERN	<i>Botaurus lentiginosus</i>	Marsh	✓				
GREAT BLUE HERON	<i>Ardea herodias</i>	Waterways & Surrounding Areas	✓				
BLACK-CROWNED NIGHT HERON	<i>Nycticorax nycticorax</i>	Waterways & Surrounding Areas	✓				
WHITE-FACED IBIS	<i>Plegadis chihi</i>	Waterways & Surrounding Areas	✓				
MOUNTAIN PLOVER	<i>Charadrius montanus</i>	Waterways & Surrounding Areas	✓				
TURKEY VULTURE	<i>Carthartes aura</i>	Cosmopolitan				✓	
GOLDEN EAGLE	<i>Aquila chrysaetos</i>	Cosmopolitan			✓		
BALD EAGLE	<i>Haliaeetus leucocephalus</i>	Lakes	✓				
WHITE-TAILED KITE	<i>Elanus leucurus</i>	Brushy Grassland		✓			
NORTHERN HARRIER	<i>Circus cyaneus</i>	Brushy Grassland		✓			
SHARP-SHINNED HAWK	<i>Accipiter striatus</i>	Woodlands & Surrounding Areas		✓			
COOPER'S HAWK	<i>Accipiter cooperii</i>	Woodlands & Surrounding Areas			✓		
NORTHERN GOSHAWK	<i>Accipiter gentilis</i>	Mountains	✓				
SWAINSON'S HAWK	<i>Buteo swainsoni</i>	Open Country		✓			
FERRUGINOUS HAWK	<i>Buteo regalis</i>	Open Country		✓			
OSPREY	<i>Pandion haliaetus</i>	Lakes	✓				
MERLIN	<i>Falco columbarius</i>	Open Woods & Surrounding Areas	✓				
PRAIRIE FALCON	<i>Falco mexicanus</i>	Open Country		✓			
PEREGRINE FALCON	<i>Falco peregrinus</i>	Open Country Near Wetlands		✓			
MOUNTAIN QUAIL	<i>Oreortyx pictus</i>	Mountains		✓			
WESTERN YELLOW-BILLED CUCKOO	<i>Coccyzus americanus occidentalis</i>	Riparian		✓			
CALIFORNIA SPOTTED OWL	<i>Stryx occidentalis occidentalis</i>	Mountains	✓				
BURROWING OWL	<i>Athene cunicularia hypugaea</i>	Open Country		✓			
BLACK SWIFT	<i>Cypseloides niger</i>	Cliffs Near Water	✓				
WILLIAMSON'S SAPSUCKER	<i>Sphyrapicus thyroideus</i>	Mountains	✓				

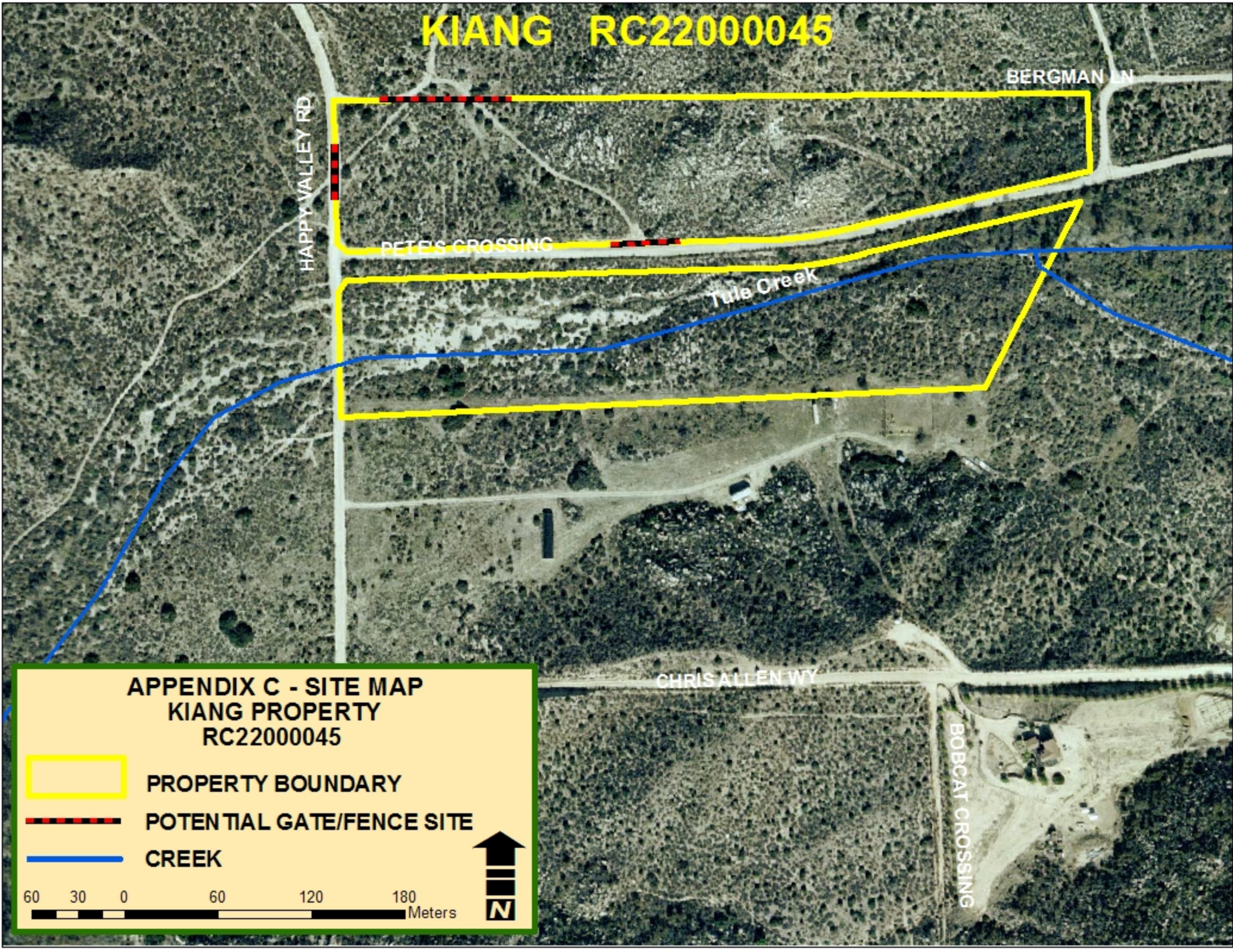
DOWNY WOODPECKER	<i>Picoides pubescens</i>	Areas With Trees	✓				
SOUTHWESTERN WILLOW FLYCATCHER	<i>Empidonax traillie extimus</i>	Riparian		✓			
CALIFORNIA HORNED LARK	<i>Eremophila alpestris acta</i>	Open Grasslands & Sage Scrub		✓			
TREE SWALLOW	<i>Tachycineta bicolor</i>	Wooded Areas Near Water	✓				
PURPLE MARTIN	<i>Progne subis</i>	Open Country		✓			
CACTUS WREN	<i>Campylorhynchus brunneicapillus</i>	Sage Scrub With Cactus		✓			
COASTAL CALIFORNIA GNATCATCHER	<i>Polioptila californica californica</i>	Sage Scrub				✓	
LOGGERHEAD SHRIKE	<i>Lanius lucovicianus</i>	Cosmopolitan				✓	
LEAST BELL'S VIREO	<i>Vireo bellii pusillus</i>	Extensive Riparian		✓			
NASHVILLE WARBLER	<i>Vermivora ruficapilla</i>	Riparian				✓	
YELLOW WARBLER	<i>Dendroica petechia brewsteri</i>	Riparian				✓	
McGILLIVRAY'S WARBLER	<i>Oporornis tolmiei</i>	Riparian				✓	
WILSON'S WARBLER	<i>Wilsonia pusilla</i>	Riparian				✓	
YELLOW-BREASTED CHAT	<i>Icteria virens</i>	Riparian				✓	
GRASSHOPPER SPARROW	<i>Ammodramus savannarum</i>	Grasslands		✓			
BELL'S SAGE SPARROW	<i>Amphispiza belli belli</i>	Chaparral		✓			
SO. CAL. RUFOUS-CROWNED SPARROW	<i>Aimophila ruficeps canescens</i>	Sage Scrub / Chaparral Slopes				✓	
LINCOLN'S SPARROW	<i>Melospiza lincolni</i>	Mountain Bogs & Meadows	✓				
TRICOLORED BLACKBIRD	<i>Agelaius tricolor</i>	Marsh	✓				
<b>MAMMALS</b>							
BOBCAT	<i>Lynx rufus</i>	Cosmopolitan					✓
MOUNTAIN LION	<i>Felis concolor</i>	Remote Mountainous Areas				✓	
LONG-TAILED WEASEL	<i>Mustela frenata</i>	Open Country				✓	
COYOTE	<i>Canis latrans</i>	Cosmopolitan					✓
BRUSH RABBIT	<i>Sylvilagus bachmani</i>	Chaparral				✓	
SAN DIEGO BLACK-TAILED JACKRABBIT	<i>Lepus californicus bennetti</i>	Open Country		✓			
LOS ANGELES POCKET MOUSE	<i>Perognathus longimembris breviansus</i>	Streambeds & Sandy Areas					✓
NORTHWESTERN SAN DIEGO POCKET MOUSE	<i>Chaetodipus fallax fallax</i>	Sage Scrub / Chaparral				✓	
AGUNAGA KANGAROO RAT	<i>Dipodomys merriami collinus</i>	Sandy Areas Near Aguanga				✓	
SAN BERNARDINO KANGAROO RAT	<i>Dipodomys merriami parvus</i>	Sandy Areas / San Jacinto River		✓			
DELZURA KANGAROO RAT	<i>Dipodomys simulans</i>	Sage Scrub / Chaparral				✓	
STEPHENS' KANGAROO RAT	<i>Dipodomys stephensi</i>	Open Country		✓			
SAN DIEGO DESERT WOODRAT	<i>Neotoma lepida intermedia</i>	Sage Scrub / Chaparral					✓
SAN BERNARDINO FLYING SQUIRREL	<i>Glaycomys sabrinus californicus</i>	Mountains	✓				

COMMON NAME	SCIENTIFIC NAME	HABITAT(S)	GENERAL LOCATIONS	NOT PRESENT	NOT LIKELY PRESENT	POSSIBLY PRESENT	LIKELY PRESENT	CONFIRMED PRESENT
beautiful hulsea	<i>Hulsea vestita</i> var. <i>callicarpa</i>	Mid-level mountains	SJMTS	✓				
Brand's phacelia	<i>Phacelia stellaris</i>	Sandy benches	SARIV		✓			
California beardtongue	<i>Penstemon californicus</i>	Mid-level mountains	SJMTS, DVA, SRP		✓			
California bedstraw	<i>Galium californicum</i> var. <i>primum</i>	Upper elevation chaparral	SJMTS, DVA, San Timoteo		✓			
California black walnut	<i>Juglans californica</i> var. <i>californica</i>	Streams	SRP, Pedley			✓		
California muhly	<i>Muhlenbergia californica</i>	Riparian / seeps	Sage area, Prado area, GAV, TEM			✓		
California Orcutt grass	<i>Orcuttia californica</i>	Vernal pools	SALT, SRP, SKUNK	✓				
chickweed oxytheca	<i>Oxytheca caryophylloides</i>	Mountains	SJMTS	✓				
Cleveland's bush monkeyflower	<i>Mimulus clevelandii</i>	Upper elevation chaparral	SAMTS		✓			
cliff cinquefoil	<i>Potentilla rimicola</i>	High elevation rocks	SJMTS	✓				
Coulter's goldfields	<i>Lasthenia glabrata</i> var. <i>coulteri</i>	Alkali vernal plains	SJVAL, Perris Valley, Nichols Rd.	✓				
Coulter's matilija poppy	<i>Romneya coulteri</i>	Dry washes and canyons	GAV, TEM			✓		
Davidson's saltscale	<i>Atriplex sereana</i> var. <i>davidsonii</i>	Alkali vernal plains and pools	SJVAL, Perris Valley, Nichols Rd.	✓				
Englemann oak	<i>Quercus engelmannii</i>	Mesic fans and slopes	SRP, SAMTS, GAV		✓			
Fish's mildwort	<i>Polygala cornuta</i> var. <i>fishiae</i>	Oak riparian woodlands	SRP, SAMTS, Temecula area		✓			
graceful tarplant	<i>Holocarpa virgata</i> elongata	Level grasslands and shrublands	SRP	✓				
Hall's monardella	<i>Monardella macrantha</i> var. <i>hallii</i>	Mountain foothills, dry slopes, ridges	SAMTS, Pine Cove area		✓			
Hammitt's clay-cress	<i>Sibaropsis hammittii</i>	Clay grasslands	SAMTS		✓			
heart-leaved pitcher plant	<i>Lepechinia cardiophylla</i>	Forests	SAMTS	✓				
intermediate mariposa lily	<i>Calochortus weedii</i> var. <i>intermedius</i>	Dry rocky slopes in SS / CHAP, burned areas	SAMTS, DVA, VAIL			✓		
Jaegar's milk-vetch	<i>Astragalus pachypus</i> var. <i>jaegeri</i>	Dry areas	VAIL, Agunaga area, Protrero area			✓		
Johnston's rock cress	<i>Arabis johnstonii</i>	Upper elevation chaparral, forests	SJMTS		✓			
lemon lily	<i>Lilium parryi</i>	Mountain wet places	SJMTS	✓				
little mousetail	<i>Myosaurus minimum</i> apus	Vernal pools, alkali sinks	SALT, SRP, GAV, MARB	✓				
long-spined spine flower	<i>Chorizanthe polygonoides</i> var. <i>longispina</i>	Rocky clay soils	GAV, TEM, SAMTS, SRP		✓			
many-stemmed dudleya	<i>Dudleya multicaulis</i>	Rocky clay soils, outcrops	GAV, TEM		✓			
Mojave tarplant	<i>Deinandra</i> [Hemizonia] <i>mohavensis</i>	Clay or silty streams	SJMTS and foothills		✓			
mud nama	<i>Nama stenocarpum</i>	Marshes	SJRIV near Gilman	✓				
Munz's mariposa lily	<i>Calochortus palmeri</i> var. <i>munzii</i>	Mountains, chaparral	SJMTS		✓			
Munz's onion	<i>Allium munzii</i>	Clay soils in SS / CHAP / Grasslands	GAV, TEM, SAMTS, SKUNK, SKIN		✓			
Nevin'a barberry	<i>Berberis nevinii</i>	Course soils in chaparral	Varies		✓			
ocellated Humboldt lily	<i>Lilium humboldtii</i> ocellatum	Mountain riparian	SAMTS, Palomar Mts.		✓			
Orcutt's brodiaea	<i>Brodiaea orcuttii</i>	Mesic grasslands and pools	SRP	✓				
Palmer's grapplinghook	<i>Harpagonella palmeri</i>	Clay soils in SS / CHAP / Grasslands	varies		✓			
Palomar monkeyflower	<i>Mimulus diffusus</i>	Sandy soils in upper elev. CHAP, forests	SAMTS, SJMTS		✓			
Parish's brittlescale	<i>Atriplex parishii</i>	Alkaine soils	SALT, lower SJRIV	✓				
Parish's meadowfoam	<i>Limnanthes gracilis</i> var. <i>parishii</i>	Ephemeral wetlands	SRP	✓				
Parry's spine flower	<i>Chorizanthe parryi</i> var. <i>parryi</i>	Alluvial scrub	Varies			✓		

APPENDIX B.  
Target Plant Species

<b>Payson'r jewelflower</b>	<i>Caulanthus simulans</i>	Pinyon-Juniper, chaparral, sage scrub	Agunaga area			✓		
<b>peninsular spine flower</b>	<i>Chorizanthe leptotheca</i>	Dry open areas	Varies		✓			
<b>Plummer's mariposa lily</b>	<i>Calochortus plummerae</i>	Varies	SJMETS, Jurupa Hills		✓			
<b>prostrate navarretia</b>	<i>Navarretia prostrata</i>	Sage scrub, vernal pools, grasslands	SRP		✓			
<b>prostrate spine flower</b>	<i>Chorizanthe procumbrens</i>	Sandy openings in CHAP / SS	SAMTS		✓			
<b>Rainbow manzanita</b>	<i>Arctostaphylos rainbowensis</i>	Iron rich soils in chaparral	SRP, GAV, TEM, Wildomar area		✓			
<b>round-leaved filaree</b>	<i>Erodium macrophyllum</i>	Grasslands	GAV, DVA, TEM	✓				
<b>San Diego ambrosia</b>	<i>Ambrosia pumila</i>	Grasslands	Alberhill, Lake Street, SKUNK	✓				
<b>San Diego button-celery</b>	<i>Eryngium aristulatum var. parishii</i>	Vernal pools	SRP	✓				
<b>San Jacinto Mountains bedstraw</b>	<i>Galium angustifolium jacinticum</i>	Forests	SJMETS	✓				
<b>San Jacinto Valley crownscale</b>	<i>Atriplex coronatum var. notatior</i>	Floodplains	MYSTIC, SALT	✓				
<b>San Miguel savory</b>	<i>Satureja chandleri</i>	Varies	SRP	✓				
<b>Santa Ana River woollystar</b>	<i>Eriastrum densifolium sanctorum</i>	Alluvial scrub (immature)	SARIV	✓				
<b>shaggy-haired alumroot</b>	<i>Heuchera hirsutissima</i>	Forests	SJMETS	✓				
<b>slender-horned spine flower</b>	<i>Dodecahema leptoceras</i>	Alluvial scrub (mature)	Indian Creek, VAIL area	✓				
<b>small-flowered microserius</b>	<i>Microserius douglasii var. platycarpha</i>	Clay foothills and grasslands	SRP, Bachelor Mt. area	✓				
<b>small-flowered morning-glory</b>	<i>Convolvulus simulans</i>	Clay and serpentine soils in grasslands	Varies	✓				
<b>smooth tarplant</b>	<i>Centromadia pungens (Hemizonia pungens laevis)</i>	Varies	Varies		✓			
<b>spreading navarretia</b>	<i>Navarretia fossalis</i>	Vernal pools and ditches	SALT, SJRIV	✓				
<b>sticky-leaved dudleya</b>	<i>Dudleya viscida</i>	Rocky canyon slopes	SAMTS		✓			
<b>thread-leaved brodiaea</b>	<i>Brodiaea filifolia</i>	Alkali pools, mesic grasslands	SJRIV, SALT, SRP	✓				
<b>Vail Lake ceanothus</b>	<i>Ceanothus ophiocilius</i>	Dry ridgetops in chaparral	VAIL area		✓			
<b>vernal barley</b>	<i>Hordeum intercedens</i>	Vernal pools and mesic grasslands	SALT, SJRIV	✓				
<b>Wright's trichocoronis</b>	<i>Trichocoronis wrightii var. wrightii</i>	Alkali vernal pools and flats	SJRIV, MYSTIC	✓				
<b>Yucaipa onion</b>	<i>Allium marvinii</i>	Clay soils in chaparral	Beaumont area		✓			

# KIANG RC22000045



BERGMAN LN

HAPPY VALLEY RD

PETE'S CROSSING

Tule Creek

CHRIS ALLEN WY

BOBCAT CROSSING

## APPENDIX C - SITE MAP KIANG PROPERTY RC22000045



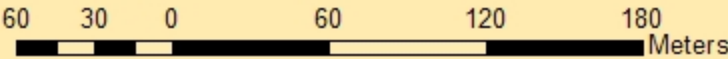
PROPERTY BOUNDARY



POTENTIAL GATE/FENCE SITE



CREEK



## APPENDIX D.



Southwest corner of KIANG-B looking east along border.



From Pete's Crossing looking east into Tule Creek and riparian area.

## APPENDIX D.



From Pete's Crossing looking southwest into Tule Creek.



Fire Break on southern border of KIANG-B.