

**INITIAL MANAGEMENT EVALUATION REPORT  
(IMER)**

**For**

**LILIEDAHL PROPERTY**



**Prepared by  
Natural Resources Management Section  
Riverside County Parks**

**November, 2007**

**Riverside County  
Multi-Species Habitat Conservation Plan  
Initial Management Evaluation and Recommendations  
Habitat Management Unit: Sage**

RESERVE NAME: SAGE 1  
ACQUISITION NAME: LILIEDAHL  
PROJECT ID NUMBER: RC22000159

---

**I. SITE PHYSICAL DESCRIPTION**

**1.A. Site Physical Location & Access:**

The Liliedahl site is located east of Exaely Road, south of Watts Road, north of Denise Road and west of Wiley Road. Access to the site can be obtained via Wiley Road which stems from Power Line Road. Access throughout the site can be done by non-four wheel drive vehicle. The site is rectangle in shape and is composed of one parcel totaling 18.67 acres. The approximate center of the site is located at:

State Plane Coordinates: 6350229E, 2132936N (NAD-83, feet)

UTM Coordinates: 505303E, 3708557N (NAD-27, meters)

Township / Range / Section: T7S, R1W, S36, Sage Quad (SBBM)

**1.B. APNs & Acreage:**

<b>APN</b>	<b>ACRES</b>
915-510-018	18.67
<b>TOTAL</b>	<b>18.67</b>

**1.C. Topography:**

The majority of the property is flat with a small drainage running through it. Access throughout the property is not limited by topography and is easy to navigate.

**1.D. Surrounding Land Use:**

The site is surrounded by low-density rural housing throughout the area. Many of the surrounding residences participate in equestrian and/or Off-Highway Vehicle (OHV) activities.

## **2. BIOLOGICAL ASSESSMENT**

### **2.A. Plant Communities:**

The site is located in an area that is mostly comprised of coastal sage scrub. Plant species associated with the coastal sage scrub habitat and found nearby include: California buckwheat (*Eriogonum fasciculatum*) and sugar bush (*Rhus ovata*). Very few of these plants are found within the property boundary because the site has been completely impacted by tractor and/or grading work. What once was a healthy coastal sage scrub plant community is now bare dirt and some post-damage plant regrowth.

### **2.B. Likely Animal Species:**

Given the environmental impacts to the site, the likelihood of finding species associated with the coastal sage scrub habitat is unlikely. The main use of the site may serve only as space for species movement. Species that may use the site for movement could include: mountain lion (*Felis concolor*), bobcat (*Lynx rufus*), coyote (*Canis latrans*), long-tailed weasel (*Mustela frenata*), spotted skunk (*Spilogale putorius*), brush rabbit (*Sylvilagus bachmani*), desert cottontail (*Sylvilagus audubonii*), southern Pacific rattlesnake (*Crotalus viridis*), California whipsnake (*Masticophis lateralis*), southern sagebrush lizard (*Sceloporus graciosus vandenburgianus*), side-blotched lizard (*Uta stansburiana*), San Diego horned lizard (*Phrynosoma coronatum blainvelleri*), California quail (*Callipepla californica*), and mourning dove (*Zenaida macroura*). Loggerhead shrike (*Lanius lucovicianus*) was found to occur during the initial site inspection.

### **2.C. Other Habitat or Wildlife Features:**

None.

### **2.D. Target Species:**

Please see Appendix A for a qualitative checklist of MSHCP target animal species, and Appendix B for plant species.

## **3. IMPACTS AND CURRENT CONDITIONS**

### **3.A. Current Uses:**

Frequent OHV activities occur throughout the area and on roads bordering the site. No other current uses can be determined from field observations. The current condition of the site is poor, with the majority of the native plant community recently removed.

**3.B. Fencing & Access Controls:**

No fencing or access controls are foreseen.

**3.C. Off-Road Vehicle (OHV) Use / Damage:**

No OHV activity is found to occur within the property, but does occur in the immediate area. Impacts to the site are found throughout the property. Damage to the habitat on the property was caused by tractor and/or grading work.

**3.D. Illegal Dumping:**

Illegal dumping was not observed to occur within the property boundary, but it does occur quite frequently in the area.

**3.E. Target Shooting & Hunting:**

The site is currently not being used for target shooting or hunting.

**3.F. Weed Abatement:**

Little to no weed abatement activities are currently necessary due to the lack of weeds on-site. Future weed abatement activities will be need along the perimeter of the site, where non-native grasses are now taking root.

**3.G. Other Recreational Opportunities and Constraints:**

No recreational opportunities or constraints are recommended or foreseen.

**3.H. Special Conditions of Purchase:**

None Reported.

**4. RESTORATION OPPORTUNITIES**

**4.A. Target Species:**

Restoration of the coastal sage scrub can best be accomplished by preventing the establishment of non-native grasses and allowing the native scrub species to naturally re-establish. Given the extensive damage to the site, seeding will most likely be the best way to restore the site to its natural state in a timely manner.

Active restoration opportunities include hydro seeding and imprint seeding of local native flora. Active restoration efforts will require more time and a larger budget, but will decrease the chance that the native flora will be replace by non-native grasses.

**4.B. Multi-Species Aspects:**

The multiple species importance of this site primarily lies in it serving as open-space foraging habitat for a number of species found in the area. The coastal sage scrub habitat has the potential to serve as habitat for more than one MSHCP target species. Please see Appendix A for a qualitative checklist of MSHCP target animal species, and Appendix B for plant species.

**5. RERSERVE DESIGN AND CONNECTIVITY**

**5.A. Boundary, Edge and Community Location:**

The Lilledahl property is directly bordered by three roads, which may increase the potential for edge effects and impacts within. The property is located near the Sage community which is mostly comprised of low-density housing.

**5.B. Connectivity:**

The Lilledahl site represents a key “stepping stone” parcel in the establishment of open-space land in an area that will likely be targeted for heavy development in the future. The site currently is located within the MSHCP Proposed Core Area 7, which is planned to connect existing Core Areas K and M to the northeast and south, respectively. Proposed Core Area 7 will also provide access to Proposed Linkage 24, which will help connect properties and Core Areas to the West.

**5.C. Nearby Existing Reserves:**

The Lilledahl site is located  $\pm 4500$  feet west of the Karam property. The Cordova, Gabrych, SDI Communities, Odegaard, United Five Star Capital, Wilson Creek, Gambill, Dinh, Licata, Button, Jalem, Smith, Kiang, Won Yoo, Bell and Weigel Reserves are all located within a  $\pm 6.0$  mile radius.

**5.D. Priority for Future Purchases:**

Priority should be given to acquire the parcels that exist between the Lilledahl site and properties to the west due to the higher probability that these open-space lands may undergo irreversible development. The acquisition of these critical parcels would help ensure the continuity of open-space within the immediate area, which will lead to further acquisitions that may connect the properties to complete MSHCP Proposed Core Area 7.

**6. INTERIM MANAGEMENT**

**6.A. Public Issues:**

No public issues are foreseen concerning this site.

**6.B. Biological Issues:**

Currently there are a few biological management issues besides restoring the natural coastal sage scrub habitat.

**6.C. Recommended Interim Management Scenario:**

- 1) Install signs to try and prevent any new OHV activities on-site.
- 2) Maintain signs that surround the site.
- 3) Periodically monitor and inspect the site for possible new OHV trails and determine if the frequency of visitors is increasing or remaining the same by documenting any new disturbances to the land (e.g. new OHV trails, trash, shotgun shells etc.).
- 4) Site visits by County Rangers and maintenance crews should establish rapport with the local residences and provide a presence to deter potential would-be trespassers.
- 5) Design a management experiment to re-seed the site with local coastal sage scrub plants.

**7. MAPS – Appendix C.**

**8. SITE PHOTOGRAPHS – Appendix D.**

COMMON NAME	SCIENTIFIC NAME	HABITAT	NOT PRESENT	NOT LIKELY PRESENT	POSSIBLY PRESENT	LIKELY PRESENT	CONFIRMED PRESENT
<b>INVERTEBRATES</b>							
RIVERSIDE FAIRY SHRIMP	<i>Streptocephalus woottoni</i>	Vernal Pool	✓				
SANTA ROSA PLATEAU FAIRY SHRIMP	<i>Linderiella santarosae</i>	Vernal Pool	✓				
VERNAL POOL FAIRY SHRIMP	<i>Branchinecta lynchi</i>	Vernal Pool	✓				
<b>INSECTS</b>							
QUINO CHECKERSPOT BUTTERFLY	<i>Euphydryas editha quino</i>	Sage Scrub		✓			
DELHI SANDS FLOWER-LOVING FLY	<i>Rhaphiomidas terminus abdominalis</i>	Delhi Sands	✓				
<b>FISH</b>							
ARROYO CHUB	<i>Gila orcuttii</i>	Aquatic	✓				
SANTA ANA SUCKER	<i>Catostomus santaanae</i>	Aquatic	✓				
<b>AMPHIBIANS</b>							
COAST RANGE NEWT	<i>Taricha torosa tarosa</i>	Riparian / Intermittant Streams	✓				
ARROYO TOAD	<i>Bufo californicus</i>	Riparian / Well-watered Streams	✓				
WESTERN SPADEFOOT TOAD	<i>Scaphiopus hammondi</i>	Temp. Pools / Surrounding Uplands	✓				
CALIFORNIA RED-LEGGED FROG	<i>Rana aurora draytonii</i>	Permanent Streams and Rivers	✓				
MOUNTAIN YELLOW-LEGGED FROG	<i>Rana mucosa</i>	Mountain Streams / Rivers / Lakes	✓				
<b>REPTILES</b>							
WESTERN POND TURTLE	<i>Clemmys marmorata pallida</i>	Aquatic	✓				
SAN DIEGO COAST HORNED LIZARD	<i>Phrynosoma coronatum blainvillii</i>	Sage Scrub / Grasslands		✓			
SOUTHERN SAGEBRUSH LIZARD	<i>Sceloporus graciosus vandenburgianus</i>			✓			
GRANITE SPINY LIZARD	<i>Sceloporus orcuttii</i>	Sage Scrub with Rocks		✓			
GRANITE NIGHT LIZARD	<i>Xantusia henshawi henshawi</i>	Rocky sage scrub & chaparral		✓			
ORANGE-THROATED WHIPTAIL	<i>Cnemidophorus hyperythrus beldingii</i>	Sage Scrub		✓			
SAN DIEGO BANDED GECKO	<i>Coleonyx variegatus abbottii</i>	Sage Scrub / Chaparral		✓			
SAN BERNARDINO MOUNTAIN KINGSSNAKE	<i>Lampropeltis zonata parviruba</i>	Upper Elev. Chaparral & Mountains		✓			
SAN DIEGO MOUNTAIN KINGSSNAKE	<i>Lampropeltis zonata pulchra</i>	Upper Elev. Chaparral & Mountains		✓			
SOUTHERN RUBBER BOA	<i>Charina bottae umbratica</i>	Mountains		✓			
NORTHERN RED DIAMOND RATTLESNAKE	<i>Crotalus ruber ruber</i>	Sage Scrub / Chaparral		✓			
<b>BIRDS</b>							
DOUBLE-CRESTED CORMORANT	<i>Phalacrocorax auritus</i>	Aquatic	✓				
AMERICAN BITTERN	<i>Botaurus lentiginosus</i>	Marsh	✓				
GREAT BLUE HERON	<i>Ardea herodias</i>	Waterways & Surrounding Areas	✓				
BLACK-CROWNED NIGHT HERON	<i>Nycticorax nycticorax</i>	Waterways & Surrounding Areas	✓				
WHITE-FACED IBIS	<i>Plegadis chihi</i>	Waterways & Surrounding Areas	✓				
MOUNTAIN PLOVER	<i>Charadrius montanus</i>	Waterways & Surrounding Areas	✓				
TURKEY VULTURE	<i>Carthartes aura</i>	Cosmopolitan		✓			
GOLDEN EAGLE	<i>Aquila chrysaetos</i>	Cosmopolitan		✓			
BALD EAGLE	<i>Haliaeetus leucocephalus</i>	Lakes	✓				
WHITE-TAILED KITE	<i>Elanus leucurus</i>	Brushy Grassland		✓			
NORTHERN HARRIER	<i>Circus cyaneus</i>	Brushy Grassland		✓			
SHARP-SHINNED HAWK	<i>Accipiter striatus</i>	Woodlands & Surrounding Areas		✓			
COOPER'S HAWK	<i>Accipiter cooperii</i>	Woodlands & Surrounding Areas	✓				
NORTHERN GOSHAWK	<i>Accipiter gentilis</i>	Mountains	✓				
SWAINSON'S HAWK	<i>Buteo swainsoni</i>	Open Country	✓				
FERRUGINOUS HAWK	<i>Buteo regalis</i>	Open Country	✓				
OSPREY	<i>Pandion haliaetus</i>	Lakes	✓				
MERLIN	<i>Falco columbarius</i>	Open Woods & Surrounding Areas	✓				
PRAIRIE FALCON	<i>Falco mexicanus</i>	Open Country		✓			
PEREGRINE FALCON	<i>Falco peregrinus</i>	Open Country Near Wetlands		✓			
MOUNTAIN QUAIL	<i>Oreortyx pictus</i>	Mountains	✓				
WESTERN YELLOW-BILLED CUCKOO	<i>Coccyzus americanus occidentalis</i>	Riparian	✓				
CALIFORNIA SPOTTED OWL	<i>Stryx occidentalis occidentalis</i>	Mountains	✓				
BURROWING OWL	<i>Athene cunicularia hypugaea</i>	Open Country		✓			
BLACK SWIFT	<i>Cypseloides niger</i>	Cliffs Near Water	✓				
WILLIAMSON'S SAPSUCKER	<i>Sphyrapicus thyroideus</i>	Mountains	✓				

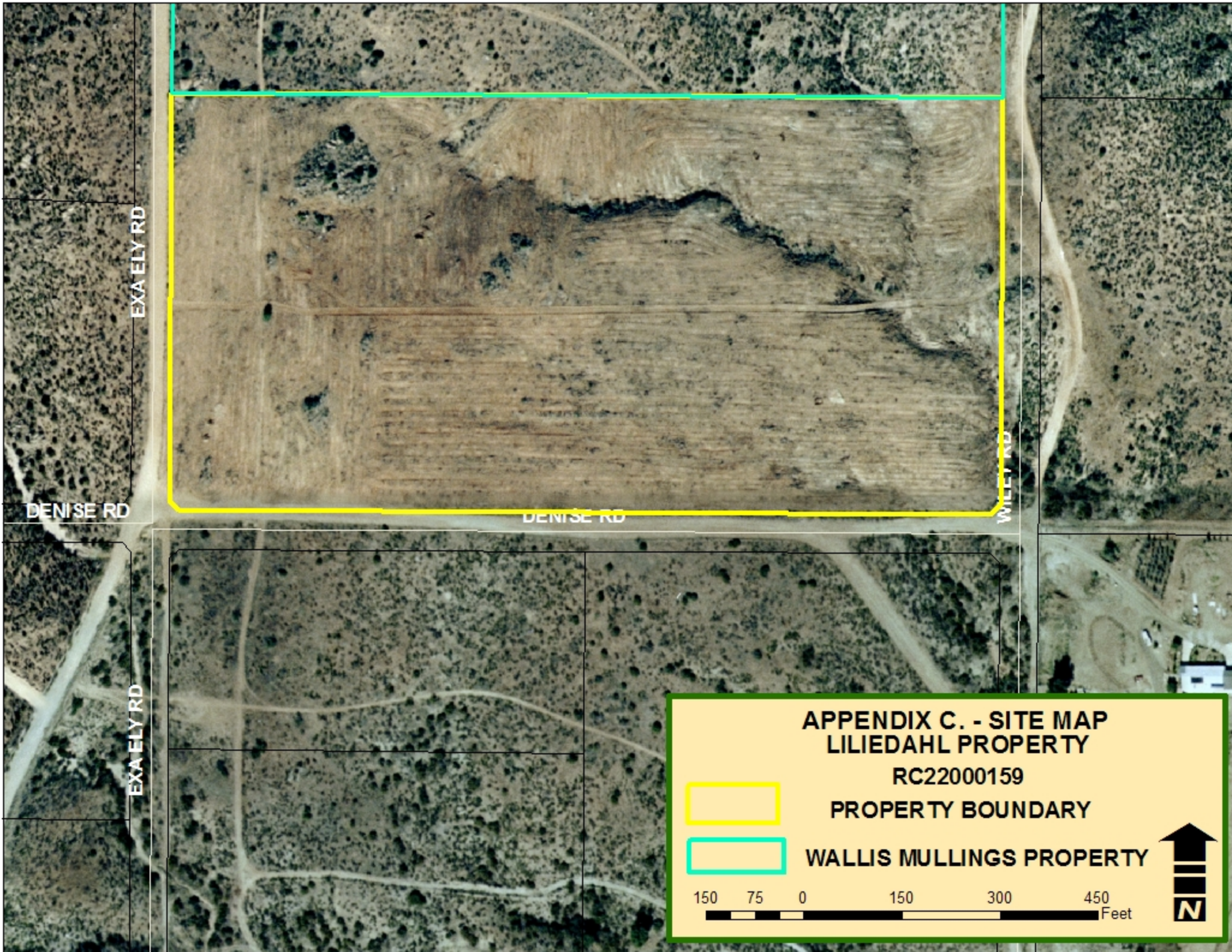
DOWNY WOODPECKER	<i>Picoides pubescens</i>	Areas With Trees	✓				
SOUTHWESTERN WILLOW FLYCATCHER	<i>Empidonax traillie extimus</i>	Riparian	✓				
CALIFORNIA HORNED LARK	<i>Eremophila alpestris acta</i>	Open Grasslands & Sage Scrub		✓			
TREE SWALLOW	<i>Tachycineta bicolor</i>	Wooded Areas Near Water	✓				
PURPLE MARTIN	<i>Progne subis</i>	Open Country		✓			
CACTUS WREN	<i>Campylorhynchus brunneicapillus</i>	Sage Scrub With Cactus		✓			
COASTAL CALIFORNIA GNATCATCHER	<i>Poliopitila californica californica</i>	Sage Scrub		✓			
LOGGERHEAD SHRIKE	<i>Lanius lucovicianus</i>	Cosmopolitan					✓
LEAST BELL'S VIREO	<i>Vireo bellii pusillus</i>	Extensive Riparian	✓				
NASHVILLE WARBLER	<i>Vermivora ruficapilla</i>	Riparian	✓				
YELLOW WARBLER	<i>Dendroica petechia brewsteri</i>	Riparian	✓				
McGILLIVRAY'S WARBLER	<i>Oporornis tolmiei</i>	Riparian	✓				
WILSON'S WARBLER	<i>Wilsonia pusilla</i>	Riparian	✓				
YELLOW-BREASTED CHAT	<i>Icteria virens</i>	Riparian	✓				
GRASSHOPPER SPARROW	<i>Ammodramus savannarum</i>	Grasslands		✓			
BELL'S SAGE SPARROW	<i>Amphispiza bellii bellii</i>	Chaparral		✓			
SO. CAL. RUFOUS-CROWNED SPARROW	<i>Aimophila ruficeps canescens</i>	Sage Scrub / Chaparral Slopes		✓			
LINCOLN'S SPARROW	<i>Melospiza lincolni</i>	Mountain Bogs & Meadows	✓				
TRICOLORED BLACKBIRD	<i>Agelaius tricolor</i>	Marsh	✓				
<b>MAMMALS</b>							
BOBCAT	<i>Lynx rufus</i>	Cosmopolitan		✓			
MOUNTAIN LION	<i>Felis concolor</i>	Remote Mountainous Areas		✓			
LONG-TAILED WEASEL	<i>Mustela frenata</i>	Open Country		✓			
COYOTE	<i>Canis latrans</i>	Cosmopolitan			✓		
BRUSH RABBIT	<i>Sylvilagus bachmani</i>	Chaparral		✓			
SAN DIEGO BLACK-TAILED JACKRABBIT	<i>Lepus californicus bennettii</i>	Open Country		✓			
LOS ANGELES POCKET MOUSE	<i>Perognathus longimembris brevisansus</i>	Streambeds & Sandy Areas	✓				
NORTHWESTERN SAN DIEGO POCKET MOUSE	<i>Chaetodipus fallax fallax</i>	Sage Scrub / Chaparral		✓			
AGUNAGA KANGAROO RAT	<i>Dipodomys merriami collinus</i>	Sandy Areas Near Aguanga		✓			
SAN BERNARDINO KANGAROO RAT	<i>Dipodomys merriami parvus</i>	Sandy Areas / San Jacinto River	✓				
DELZURA KANGAROO RAT	<i>Dipodomys simulans</i>	Sage Scrub / Chaparral		✓			
STEPHENS' KANGAROO RAT	<i>Dipodomys stephensi</i>	Open Country		✓			
SAN DIEGO DESERT WOODRAT	<i>Neotoma lepida intermedia</i>	Sage Scrub / Chaparral		✓			
SAN BERNARDINO FLYING SQUIRREL	<i>Glaucomys sabrinus californicus</i>	Mountains	✓				

APPENDIX B.  
Target Plant Species

COMMON NAME	SCIENTIFIC NAME	HABITAT(S)	GENERAL LOCATIONS	NOT PRESENT	NOT LIKELY PRESENT	POSSIBLY PRESENT	LIKELY PRESENT	CONFIRMED PRESENT
beautiful hulsea	<i>Hulsea vestita</i> var. <i>callicarpa</i>	Mid-level mountains	SJMETS	✓				
Brand's phacelia	<i>Phacelia stellaris</i>	Sandy benches	SARIV	✓				
California beardtongue	<i>Penstemon californicus</i>	Mid-level mountains	SJMETS, DVA, SRP		✓			
California bedstraw	<i>Galium californicum</i> var. <i>primum</i>	Upper elevation chaparral	SJMETS, DVA, San Timoteo		✓			
California black walnut	<i>Juglans californica</i> var. <i>californica</i>	Streams	SRP, Pedley	✓				
California muhly	<i>Muhlenbergia californica</i>	Riparian / seeps	Sage area, Prado area, GAV, TEM	✓				
California Orcutt grass	<i>Orcuttia californica</i>	Vernal pools	SALT, SRP, SKUNK	✓				
chickweed oxytheca	<i>Oxytheca caryophylloides</i>	Mountains	SJMETS	✓				
Cleveland's bush monkeyflower	<i>Mimulus clevelandii</i>	Upper elevation chaparral	SAMTS	✓				
cliff cinquefoil	<i>Potentilla rimicola</i>	High elevation rocks	SJMETS	✓				
Coulter's goldfields	<i>Lasthenia glabrata</i> var. <i>coulteri</i>	Alkali vernal plains	SJVAL, Perris Valley, Nichols Rd.	✓				
Coulter's matilija poppy	<i>Romneya coulteri</i>	Dry washes and canyons	GAV, TEM	✓				
Davidson's saltscale	<i>Atriplex sereana</i> var. <i>davidsonii</i>	Alkali vernal plains and pools	SJVAL, Perris Valley, Nichols Rd.	✓				
Englemann oak	<i>Quercus engelmannii</i>	Mesic fans and slopes	SRP, SAMTS, GAV	✓				
Fish's mildwort	<i>Polygala comuta</i> var. <i>fishiae</i>	Oak riparian woodlands	SRP, SAMTS, Temecula area		✓			
graceful tarplant	<i>Holocarpa virgata</i> elongata	Level grasslands and shrublands	SRP		✓			
Hall's monardella	<i>Monardella macrantha</i> var. <i>hallii</i>	Mountain foothills, dry slopes, ridges	SAMTS, Pine Cove area		✓			
Hammitt's clay-cress	<i>Sibaropsis hammittii</i>	Clay grasslands	SAMTS		✓			
heart-leaved pitcher plant	<i>Lepechinia cardiophylla</i>	Forests	SAMTS	✓				
intermediate mariposa lily	<i>Calochortus weedii</i> var. <i>intermedius</i>	Dry rocky slopes in SS / CHAP, burned areas	SAMTS, DVA, VAIL		✓			
Jaegar's milk-vetch	<i>Astragalus pachypus</i> var. <i>jaegeri</i>	Dry areas	VAIL, Agunaga area, Protero area		✓			
Johnston's rock cress	<i>Arabis johnstonii</i>	Upper elevation chaparral, forests	SJMETS	✓				
lemon lily	<i>Lilium parryi</i>	Mountain wet places	SJMETS	✓				
little mousetail	<i>Myosaurus minimum</i> apus	Vernal pools, alkali sinks	SALT, SRP, GAV, MARB	✓				
long-spined spine flower	<i>Chorizanthe polygonoides</i> var. <i>longispina</i>	Rocky clay soils	GAV, TEM, SAMTS, SRP		✓			
many-stemmed dudleya	<i>Dudleya multicaulis</i>	Rocky clay soils, outcrops	GAV, TEM		✓			
Mojave tarplant	<i>Deinandra</i> [Hemizonia] <i>mohavensis</i>	Clay or silty streams	SJMETS and foothills	✓				
mud nama	<i>Nama stenocarpum</i>	Marshes	SJRIV near Gilman	✓				
Munz's mariposa lily	<i>Calochortus palmeri</i> var. <i>munzii</i>	Mountains, chaparral	SJMETS	✓				
Munz's onion	<i>Allium munzii</i>	Clay soils in SS / CHAP / Grasslands	GAV, TEM, SAMTS, SKUNK, SKIN		✓			
Nevin'a barberry	<i>Berberis nevinii</i>	Course soils in chaparral	Varies		✓			
ocellated Humboldt lily	<i>Lilium humboldtii</i> ocellatum	Mountain riparian	SAMTS, Palomar Mts.	✓				
Orcutt's brodiaea	<i>Brodiaea orcuttii</i>	Mesic grasslands and pools	SRP		✓			
Palmer's grapplinghook	<i>Harpagonella palmeri</i>	Clay soils in SS / CHAP / Grasslands	varies		✓			
Palomar monkeyflower	<i>Mimulus diffusus</i>	Sandy soils in upper elev. CHAP, forests	SAMTS, SJMETS		✓			
Parish's brittlescale	<i>Atriplex parishii</i>	Alkaine soils	SALT, lower SJRIV		✓			
Parish's meadowfoam	<i>Limnanthes gracilis</i> var. <i>parishii</i>	Ephemeral wetlands	SRP	✓				
Parry's spine flower	<i>Chorizanthe parryi</i> var. <i>parryi</i>	Alluvial scrub	Varies	✓				
Payson'r jewelflower	<i>Caulanthus simulans</i>	Pinyon-Juniper, chaparral, sage scrub	Agunaga area		✓			

APPENDIX B.  
Target Plant Species

<b>peninsular spine flower</b>	<i>Chorizanthe leptotheca</i>	Dry open areas	Varies	✓				
<b>Plummer's mariposa lily</b>	<i>Calochortus plummerae</i>	Varies	SJMETS, Jurupa Hills	✓				
<b>prostrate navarretia</b>	<i>Navarretia prostrata</i>	Sage scrub, vernal pools, grasslands	SRP		✓			
<b>prostrate spine flower</b>	<i>Chorizanthe procumbrens</i>	Sandy openings in CHAP / SS	SAMTS		✓			
<b>Rainbow manzanita</b>	<i>Arctostaphylos rainbowensis</i>	Iron rich soils in chaparral	SRP, GAV, TEM, Wildomar area		✓			
<b>round-leaved filaree</b>	<i>Erodium macrophyllum</i>	Grasslands	GAV, DVA, TEM		✓			
<b>San Diego ambrosia</b>	<i>Ambrosia pumila</i>	Grasslands	Alberhill, Lake Street, SKUNK		✓			
<b>San Diego button-celery</b>	<i>Eryngium aristulatum var. parishii</i>	Vernal pools	SRP	✓				
<b>San Jacinto Mountains bedstraw</b>	<i>Galium angustifolium jacinticum</i>	Forests	SJMETS	✓				
<b>San Jacinto Valley crownscale</b>	<i>Atriplex coronatum var. notatior</i>	Floodplains	MYSTIC, SALT	✓				
<b>San Miguel savory</b>	<i>Satureja chandleri</i>	Varies	SRP		✓			
<b>Santa Ana River woollystar</b>	<i>Eriastrum densifolium sanctorum</i>	Alluvial scrub (immature)	SARIV		✓			
<b>shaggy-haired alumroot</b>	<i>Heuchera hirsutissima</i>	Forests	SJMETS	✓				
<b>slender-horned spine flower</b>	<i>Dodecahema leptoceras</i>	Alluvial scrub (mature)	Indian Creek, VAIL area	✓				
<b>small-flowered microserius</b>	<i>Microserius douglasii var. platycarpa</i>	Clay foothills and grasslands	SRP, Bachelor Mt. area		✓			
<b>small-flowered morning-glory</b>	<i>Convolvulus simulans</i>	Clay and serpentine soils in grasslands	Varies		✓			
<b>smooth tarplant</b>	<i>Centromadia pungens (Hemizonia pungens laevis)</i>	Varies	Varies		✓			
<b>spreading navarretia</b>	<i>Navarretia fossalis</i>	Vernal pools and ditches	SALT, SJRIV	✓				
<b>sticky-leaved dudleya</b>	<i>Dudleya viscida</i>	Rocky canyon slopes	SAMTS	✓				
<b>thread-leaved brodiaea</b>	<i>Brodiaea filifolia</i>	Alkali pools, mesic grasslands	SJRIV, SALT, SRP		✓			
<b>Vail Lake ceanothus</b>	<i>Ceanothus ophiophilus</i>	Dry ridgetops in chaparral	VAIL area		✓			
<b>vernal barley</b>	<i>Hordeum intercedens</i>	Vernal pools and mesic grasslands	SALT, SJRIV		✓			
<b>Wright's trichocoronis</b>	<i>Trichocoronis wrightii var. wrightii</i>	Alkali vernal pools and flats	SJRIV, MYSTIC	✓				
<b>Yucaipa onion</b>	<i>Allium marvinii</i>	Clay soils in chaparral	Beaumont area		✓			



EXA ELY RD

DENISE RD

DENISE RD

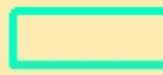
WILLET RD

EXA ELY RD

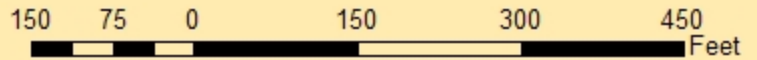
**APPENDIX C. - SITE MAP  
LILIEDAHL PROPERTY  
RC22000159**



**PROPERTY BOUNDARY**



**WALLIS MULLINGS PROPERTY**



**APPENDIX D.**



Southeastern corner looking north.



Southeastern corner looking northwest.

## APPENDIX D.



Eastern border showing damaged land versus natural land.



Looking west into center of property from eastern border.