

**INITIAL MANAGEMENT EVALUATION & RECOMMENDATIONS REPORT
(IMER)**

For

ODEGAARD PROPERTY



**Prepared by
Natural Resources Management Section
Riverside County Parks**

March, 2007

**Riverside County
Multi-Species Habitat Conservation Plan
Initial Management Evaluation and Recommendations
Habitat Management Unit: Sage**

RESERVE NAME: **SAGE 2**
ACQUISITION NAME: ODEGAARD
PROJECT ID NUMBER: RC22000060

I. SITE PHYSICAL DESCRIPTION

1.A. Site Physical Location & Access:

The Odegaard site is located west of Wilson Valley Road and south of Gene Road just southeast of the City of Sage. Access to the sites can be obtained directly through Gene Road, which serves as the northern border of the property. Access throughout the site can be done by non-four wheel drive vehicles on roads and trails throughout the site and afoot in rocky-steep areas. The site is “L” shaped, and is composed of one parcel totaling 115.86-acres. The approximate center of the site is located at:

State Plane Coordinates: 6374223E, 2127512N (NAD-83, feet)

UTM Coordinates: 512617E, 3706969N (NAD-27, meters)

Township / Range / Section: T8S, R1W, S3, Cahuilla Mt. and Aguanga Quad

1.B. APNs & Acreage:

APN	ACRES
581-090-006	115.86
TOTAL	115.86

1.C. Topography:

The majority of the property is comprised of gently to steeply rolling hills with rocks and boulders scattered throughout. There are three distinct ridges within the property boundary.

1.D. Surrounding Land Use:

The site is surrounded by the natural open-space of the Sage area. Low-density housing can be found throughout the area, with many of the residences participating in equestrian and/or Off-Highway Vehicle (OHV) activities.

2. BIOLOGICAL ASSESSMENT

2.A. Plant Communities:

The majority of the parcel supports a coastal sage scrub plant community. Shrub species found on-site include: California sagebrush (*Artemisia californica*), California buckwheat (*Eriogonum fasciculatum*), cane cholla (*Opuntia parryi*), Spanish bayonet (*Yucca baccata*), and coyote brush (*Baccharis pilularis*).

2.B. Likely Animal Species:

Given the natural open-space environment and lack of human encroachment the likelihood of finding species associated with the coastal sage scrub habitat is very high. Potential species could include: mountain lion (*Felis concolor*), bobcat (*Lynx rufus*), coyote (*Canis latrans*), spotted skunk (*Spilogale putorius*), bats (several species), brush rabbit (*Sylvilagus bachmani*), southern Pacific rattlesnake (*Crotalus viridis*), California whipsnake (*Masticophis lateralis*), Baja California lyresnake (*Trimorphodon biscutatus lyrophanes*), western whiptail (*Cnemidophorus tigris*), coachwhip (*Masticophis flagellum*), rosy boa (*Lichanura trivirgata*), southern sagebrush lizard (*Sceloporus graciosus vandenburgianus*), side-blotched lizard (*Uta stansburiana*), granite spiny lizard (*Sceloporus orcuttii*), San Diego horned lizard (*Phrynosoma coronatum blainvelleriei*), red-tailed hawk (*Buteo jamaicensis*), black phoebe (*Sayornis nigricans*), California thrasher (*Toxostoma redivivum*), California towhee (*Pipilo fuscus*), spotted towhee (*Pipilo maculatus*), wrentit (*Chamaea fasciata*), California quail (*Callipepla californica*), and mourning dove (*Zenaida macroura*).

2.C. Other Habitat or Wildlife Features:

The presence of large boulders and rocky outcrops on-site may be considered potentially suitable roosting habitat for a variety of bats.

Given the rocky geology and geographic location of the site, potentially suitable habitat is present for granite night lizard (*Xantusia henshawi*).

A small riparian corridor exists near the eastern border of the parcel, which may be suitable habitat for several riparian species. The riparian corridor extends south into conservation land managed by the Center for Natural Lands Management (CNLM).

2.D. Target Species:

Please see Appendix A for a qualitative checklist of MSHCP target animal species, and Appendix B for plant species.

3. IMPACTS AND CURRENT CONDITIONS

3.A. Current Uses:

The site currently supports several access roads, which interconnect the low-density housing within the area. OHV activities occur throughout the reserve in areas where access is not limited by the rocky/bouldery geology.

3.B. Fencing & Access Controls:

Given the remoteness of the site, fencing for most of the areas will not be necessary unless OHV activity, illegal trash dumping and illegal shooting increase to a level that is detrimental to the habitat.

An access road that starts at Gene Road and runs south through the majority of the site does not provide access to any residences in the area. Gene Road should be fenced off to prevent increased traffic or illegal dumping.

3.C. Off-Road Vehicle (OHV) Use / Damage:

Established OHV trails currently exist on-site and additional fencing may need to be done if OHV use is shown to have adverse impacts within the conservation area. Current OHV use is observed to occur on establish roads and is not considered rampant, but is common.

3.D. Illegal Dumping:

Given the remoteness and lack of proximity to densely populated areas, the site has little to no illegal dumping. Initial trash on the site has been already removed by the management staff.

3.E. Target Shooting & Hunting

The site is currently not being used for target shooting or hunting to any applicable degree.

3.F. Weed Abatement:::

No weed abatement activities are currently required on this site.

3.G. Other Recreational Opportunities and Constraints:

With proper management and funding, opportunities could exist in the future for: hiking, nature study, mountain biking, equestrian use, aesthetics and solitude.

3.H. Special Conditions of Purchase:

None Reported.

4. RESTORATION OPPORTUNITIES

4.A. Target Species:

Since the majority of the site is in relatively pristine condition, little to no restoration concerns exist.

4.B. Multi-Species Aspects:

None required.

5. RERSERVE DESIGN AND CONNECTIVITY

5.A. Boundary, Edge and Community Location:

Due to its relatively large size, "L" shape, and abundance of OHV trails/access roads throughout the reserve, the site supports a high degree of edge. However, by acquiring surrounding land and establishing continuity between reserves it will minimize edge effects.

5.B. Connectivity:

The Odegaard reserve represents a key piece in the establishment and conservation of the MSHCP designated Core 7 area. By establishing the Odegaard reserve it will help conserve crucial criteria cells in the area. These particular criteria cells will help interconnect habitat to the Cactus Valley HMU (Habitat Management Units) in the north, the Meniffee HMU to the west and habitat that extends south into San Diego County. The reserve will also help in uniting existing cores L, M, and K.

5.C. Nearby Existing Reserves:

The Cordova and Wilson Valley Mitigation Bank reserves (a.k.a. SDI Communities) are located approximately 3 miles to the north of the Odegaard site. Currently the majority of Wilson Valley Mitigation Bank is managed by the CNLM, but steps are being taken by the County of Riverside to acquire the reserve for the MSHCP.

5.D. Priority for Future Purchases:

Priority should be given to acquire the parcels that exist between the Lake Skinner Reserve, Cordova/Wilson Valley site and the Odegaard site due to the high probability that these open-space lands will undergo irreversible development. The acquisition of these critical parcels would help ensure the continuity of open-space within the Lake Skinner/Sage/San Jacinto corridor, in an area likely to be developed soon.

6. INTERIM MANAGEMENT

6.A. Public Issues:

No public issues are foreseen concerning this site.

6.B. Biological Issues:

Currently there are no biological management issues. Future concerns may require species composition surveys to better understand the existing biology of the sites. The results of the surveys will provide a better understanding of how to correctly manage the lands.

6.C. Recommended Interim Management Scenario:

- 1) Periodically monitor and inspect the site for new OHV trails to determine if the frequency of visitors is increasing by documenting any new disturbances (e.g. new OHV trails, trash, shotgun shells etc.).
- 2) Site visits by County rangers and maintenance crews to establish rapport with the local residents and provide a presence to deter potential would-be trespassers.
- 3) Post low-key signs that identify County ownership and on-site restrictions.
- 4) Establish minor fencing at key points to prevent OHV access.

7. MAPS – Appendix C.

8. SITE PHOTOGRAPHS – Appendix D.

COMMON NAME	SCIENTIFIC NAME	HABITAT	NOT PRESENT	NOT LIKELY PRESENT	POSSIBLY PRESENT	LIKELY PRESENT	CONFIRMED PRESENT
INVERTEBRATES							
RIVERSIDE FAIRY SHRIMP	<i>Streptocephalus woottoni</i>	Vernal Pool	✓				
SANTA ROSA PLATEAU FAIRY SHRIMP	<i>Linderiella santarosae</i>	Vernal Pool	✓				
VERNAL POOL FAIRY SHRIMP	<i>Branchinecta lynchi</i>	Vernal Pool	✓				
INSECTS							
QUINO CHECKERSPOT BUTTERFLY	<i>Euphydryas editha quino</i>	Sage Scrub			✓		
DELHI SANDS FLOWER-LOVING FLY	<i>Rhaphiomidas terminus abdominalis</i>	Delhi Sands	✓				
FISH							
ARROYO CHUB	<i>Gila orcuttii</i>	Aquatic	✓				
SANTA ANA SUCKER	<i>Catostomus santaanae</i>	Aquatic	✓				
AMPHIBIANS							
COAST RANGE NEWT	<i>Taricha torosa tarosa</i>	Riparian / Intermittant Streams		✓			
ARROYO TOAD	<i>Bufo californicus</i>	Riparian / Well-watered Streams		✓			
WESTERN SPADEFOOT TOAD	<i>Scaphiopus hammondi</i>	Temp. Pools / Surrounding Uplands		✓			
CALIFORNIA RED-LEGGED FROG	<i>Rana aurora draytonii</i>	Permanent Streams and Rivers		✓			
MOUNTAIN YELLOW-LEGGED FROG	<i>Rana mucosa</i>	Mountain Streams / Rivers / Lakes		✓			
REPTILES							
WESTERN POND TURTLE	<i>Clemmys marmorata pallida</i>	Aquatic	✓				
SAN DIEGO COAST HORNED LIZARD	<i>Phrynosoma coronatum blainvillii</i>	Sage Scrub / Grasslands				✓	
SOUTHERN SAGEBRUSH LIZARD	<i>Sceloporus graciosus vandenburgianus</i>				✓		
GRANITE SPINY LIZARD	<i>Sceloporus orcuttii</i>	Sage Scrub with Rocks			✓		
GRANITE NIGHT LIZARD	<i>Xantusia henshawi henshawi</i>	Rocky sage scrub & chaparral			✓		
ORANGE-THROATED WHIPTAIL	<i>Cnemidophorus hyperythrus beldingii</i>	Sage Scrub			✓		
SAN DIEGO BANDED GECKO	<i>Coleonyx variegatus abbottii</i>	Sage Scrub / Chaparral			✓		
SAN BERNARDINO MOUNTAIN KINGSSNAKE	<i>Lampropeltis zonata parviruba</i>	Upper Elev. Chaparral & Mountains		✓			
SAN DIEGO MOUNTAIN KINGSSNAKE	<i>Lampropeltis zonata pulchra</i>	Upper Elev. Chaparral & Mountains		✓			
SOUTHERN RUBBER BOA	<i>Charina bottae umbratica</i>	Mountains		✓			
NORTHERN RED DIAMOND RATTLESNAKE	<i>Crotalus ruber ruber</i>	Sage Scrub / Chaparral				✓	
BIRDS							
DOUBLE-CRESTED CORMORANT	<i>Phalacrocorax auritus</i>	Aquatic	✓				
AMERICAN BITTERN	<i>Botaurus lentiginosus</i>	Marsh	✓				
GREAT BLUE HERON	<i>Ardea herodias</i>	Waterways & Surrounding Areas	✓				
BLACK-CROWNED NIGHT HERON	<i>Nycticorax nycticorax</i>	Waterways & Surrounding Areas	✓				
WHITE-FACED IBIS	<i>Plegadis chihi</i>	Waterways & Surrounding Areas	✓				
MOUNTAIN PLOVER	<i>Charadrius montanus</i>	Waterways & Surrounding Areas	✓				
TURKEY VULTURE	<i>Carthartes aura</i>	Cosmopolitan				✓	
GOLDEN EAGLE	<i>Aquila chrysaetos</i>	Cosmopolitan			✓		
BALD EAGLE	<i>Haliaeetus leucocephalus</i>	Lakes	✓				
WHITE-TAILED KITE	<i>Elanus leucurus</i>	Brushy Grassland		✓			
NORTHERN HARRIER	<i>Circus cyaneus</i>	Brushy Grassland			✓		
SHARP-SHINNED HAWK	<i>Accipiter striatus</i>	Woodlands & Surrounding Areas		✓			
COOPER'S HAWK	<i>Accipiter cooperii</i>	Woodlands & Surrounding Areas		✓			
NORTHERN GOSHAWK	<i>Accipiter gentilis</i>	Mountains	✓				
SWAINSON'S HAWK	<i>Buteo swainsoni</i>	Open Country	✓				
FERRUGINOUS HAWK	<i>Buteo regalis</i>	Open Country	✓				
OSPREY	<i>Pandion haliaetus</i>	Lakes	✓				
MERLIN	<i>Falco columbarius</i>	Open Woods & Surrounding Areas	✓				
PRAIRIE FALCON	<i>Falco mexicanus</i>	Open Country		✓			
PEREGRINE FALCON	<i>Falco peregrinus</i>	Open Country Near Wetlands		✓			
MOUNTAIN QUAIL	<i>Oreortyx pictus</i>	Mountains	✓				
WESTERN YELLOW-BILLED CUCKOO	<i>Coccyzus americanus occidentalis</i>	Riparian	✓				
CALIFORNIA SPOTTED OWL	<i>Stryx occidentalis occidentalis</i>	Mountains	✓				
BURROWING OWL	<i>Athene cunicularia hypugaea</i>	Open Country		✓			
BLACK SWIFT	<i>Cypseloides niger</i>	Cliffs Near Water	✓				
WILLIAMSON'S SAPSUCKER	<i>Sphyrapicus thyroideus</i>	Mountains	✓				

DOWNY WOODPECKER	<i>Picoides pubescens</i>	Areas With Trees	✓				
SOUTHWESTERN WILLOW FLYCATCHER	<i>Empidonax traillie extimus</i>	Riparian		✓			
CALIFORNIA HORNED LARK	<i>Eremophila alpestris acta</i>	Open Grasslands & Sage Scrub			✓		
TREE SWALLOW	<i>Tachycineta bicolor</i>	Wooded Areas Near Water	✓				
PURPLE MARTIN	<i>Progne subis</i>	Open Country	✓				
CACTUS WREN	<i>Campylorhynchus brunneicapillus</i>	Sage Scrub With Cactus		✓			
COASTAL CALIFORNIA GNATCATCHER	<i>Poliophtila californica californica</i>	Sage Scrub		✓			
LOGGERHEAD SHRIKE	<i>Lanius lucovicianus</i>	Cosmopolitan		✓			
LEAST BELL'S VIREO	<i>Vireo bellii pusillus</i>	Extensive Riparian		✓			
NASHVILLE WARBLER	<i>Vermivora ruficapilla</i>	Riparian		✓			
YELLOW WARBLER	<i>Dendroica petechia brewsteri</i>	Riparian		✓			
McGILLIVRAY'S WARBLER	<i>Oporomis tolmiei</i>	Riparian		✓			
WILSON'S WARBLER	<i>Wilsonia pusilla</i>	Riparian		✓			
YELLOW-BREASTED CHAT	<i>Icteria virens</i>	Riparian		✓			
GRASSHOPPER SPARROW	<i>Ammodramus savannarum</i>	Grasslands		✓			
BELL'S SAGE SPARROW	<i>Amphispiza bellii bellii</i>	Chaparral			✓		
SO. CAL. RUFOUS-CROWNED SPARROW	<i>Aimophila ruficeps canescens</i>	Sage Scrub / Chaparral Slopes			✓		
LINCOLN'S SPARROW	<i>Melospiza lincolni</i>	Mountain Bogs & Meadows	✓				
TRICOLORED BLACKBIRD	<i>Agelaius tricolor</i>	Marsh	✓				
MAMMALS							
BOBCAT	<i>Lynx rufus</i>	Cosmopolitan				✓	
MOUNTAIN LION	<i>Felis concolor</i>	Remote Mountainous Areas				✓	
LONG-TAILED WEASEL	<i>Mustela frenata</i>	Open Country			✓		
COYOTE	<i>Canis latrans</i>	Cosmopolitan					✓
BRUSH RABBIT	<i>Sylvilagus bachmani</i>	Chaparral				✓	
SAN DIEGO BLACK-TAILED JACKRABBIT	<i>Lepus californicus bennettii</i>	Open Country			✓		
LOS ANGELES POCKET MOUSE	<i>Perognathus longimembris brevisus</i>	Streambeds & Sandy Areas		✓			
NORTHWESTERN SAN DIEGO POCKET MOUSE	<i>Chaetodipus fallax fallax</i>	Sage Scrub / Chaparral				✓	
AGUNAGA KANGAROO RAT	<i>Dipodomys merriami collinus</i>	Sandy Areas Near Aguanga			✓		
SAN BERNARDINO KANGAROO RAT	<i>Dipodomys merriami parvus</i>	Sandy Areas / San Jacinto River	✓				
DELZURA KANGAROO RAT	<i>Dipodomys simulans</i>	Sage Scrub / Chaparral			✓		
STEPHENS' KANGAROO RAT	<i>Dipodomys stephensi</i>	Open Country			✓		
SAN DIEGO DESERT WOODRAT	<i>Neotoma lepida intermedia</i>	Sage Scrub / Chaparral				✓	
SAN BERNARDINO FLYING SQUIRREL	<i>Glaycomys sabrinus californicus</i>	Mountains	✓				

APPENDIX B.
Target Plant Species

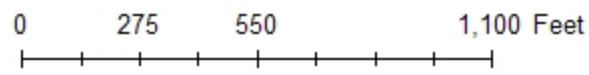
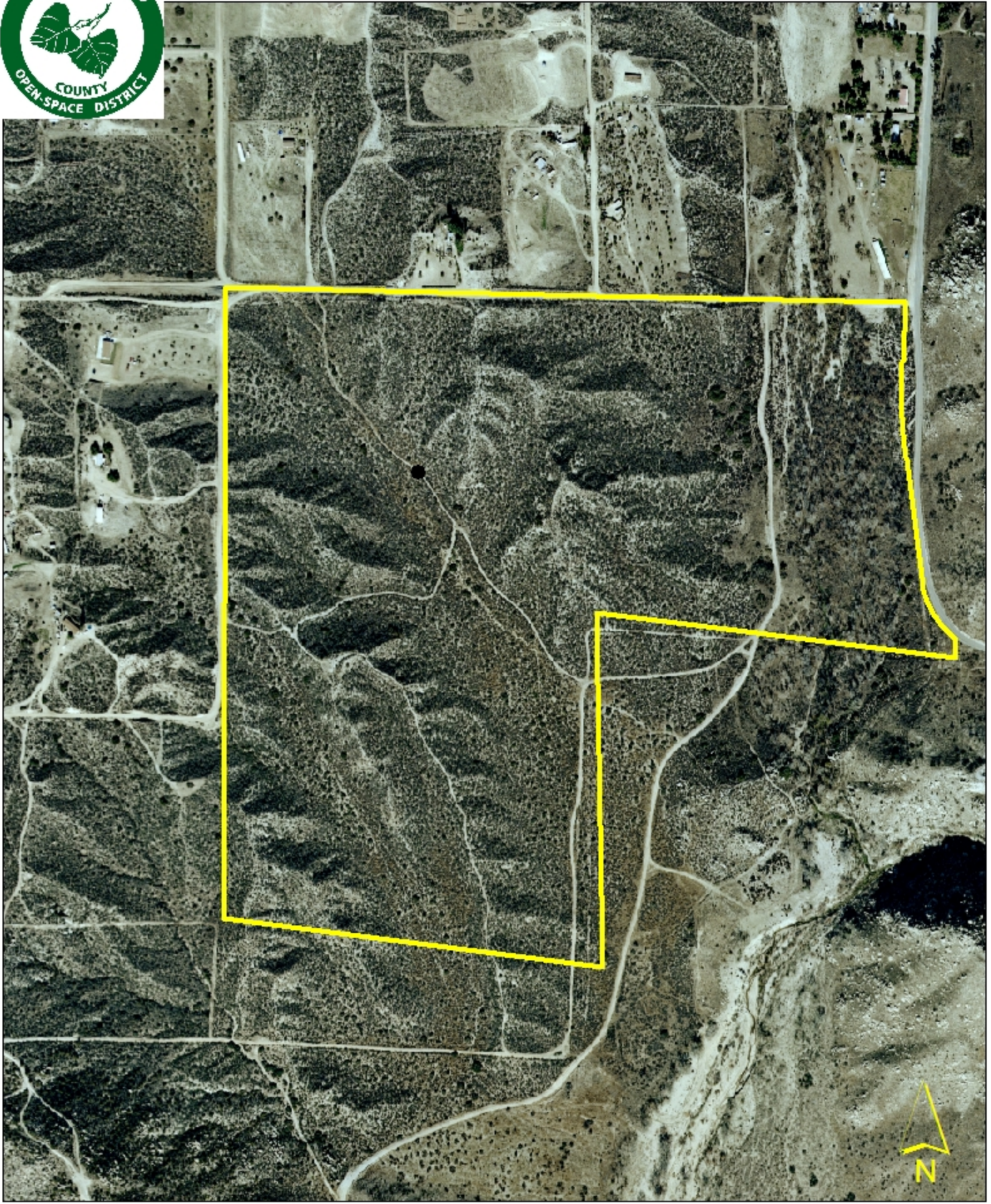
COMMON NAME	SCIENTIFIC NAME	HABITAT(S)	GENERAL LOCATIONS	NOT PRESENT	NOT LIKELY PRESENT	POSSIBLY PRESENT	LIKELY PRESENT	CONFIRMED PRESENT
beautiful hulsea	<i>Hulsea vestita</i> var. <i>callicarpa</i>	Mid-level mountains	SJMTS		✓			
Brand's phacelia	<i>Phacelia stellaris</i>	Sandy benches	SARIV	✓				
California beardtongue	<i>Penstemon californicus</i>	Mid-level mountains	SJMTS, DVA, SRP		✓			
California bedstraw	<i>Galium californicum</i> var. <i>primum</i>	Upper elevation chaparral	SJMTS, DVA, San Timoteo			✓		
California black walnut	<i>Juglans californica</i> var. <i>californica</i>	Streams	SRP, Pedley		✓			
California muhly	<i>Muhlenbergia californica</i>	Riparian / seeps	Sage area, Prado area, GAV, TEM		✓			
California Orcutt grass	<i>Orcuttia californica</i>	Vernal pools	SALT, SRP, SKUNK	✓				
chickweed oxytheca	<i>Oxytheca caryophylloides</i>	Mountains	SJMTS	✓				
Cleveland's bush monkeyflower	<i>Mimulus clevelandii</i>	Upper elevation chaparral	SAMTS			✓		
cliff cinquefoil	<i>Potentilla rimicola</i>	High elevation rocks	SJMTS	✓				
Coulter's goldfields	<i>Lasthenia glabrata</i> var. <i>coulteri</i>	Alkali vernal plains	SJVAL, Perris Valley, Nichols Rd.	✓				
Coulter's matilija poppy	<i>Romneya coulteri</i>	Dry washes and canyons	GAV, TEM		✓			
Davidson's saltscale	<i>Atriplex sereana</i> var. <i>davidsonii</i>	Alkali vernal plains and pools	SJVAL, Perris Valley, Nichols Rd.	✓				
Englemann oak	<i>Quercus engelmannii</i>	Mesic fans and slopes	SRP, SAMTS, GAV		✓			
Fish's mildwort	<i>Polygala cornuta</i> var. <i>fishiae</i>	Oak riparian woodlands	SRP, SAMTS, Temecula area		✓			
graceful tarplant	<i>Holocarpa virgata</i> <i>elongata</i>	Level grasslands and shrublands	SRP		✓			
Hall's monardella	<i>Monardella macrantha</i> var. <i>hallii</i>	Mountain foothills, dry slopes, ridges	SAMTS, Pine Cove area	✓				
Hammitt's clay-cress	<i>Sibaropsis hammittii</i>	Clay grasslands	SAMTS	✓				
heart-leaved pitcher plant	<i>Lepechinia cardiophylla</i>	Forests	SAMTS	✓				
intermediate mariposa lily	<i>Calochortus weedii</i> var. <i>intermedius</i>	Dry rocky slopes in SS / CHAP, burned	SAMTS, DVA, VAIL		✓			
Jaegar's milk-vetch	<i>Astragalus pachypus</i> var. <i>jaegeri</i>	Dry areas	VAIL, Agunaga area, Protrero area		✓			
Johnston's rock cress	<i>Arabis johnstonii</i>	Upper elevation chaparral, forests	SJMTS		✓			
lemon lily	<i>Lilium parryi</i>	Mountain wet places	SJMTS	✓				
little mousetail	<i>Myosaurus minimum</i> <i>apus</i>	Vernal pools, alkali sinks	SALT, SRP, GAV, MARB	✓				
long-spined spine flower	<i>Chorizanthe polygonoides</i> var. <i>longispina</i>	Rocky clay soils	GAV, TEM, SAMTS, SRP			✓		
many-stemmed dudleya	<i>Dudleya multicaulis</i>	Rocky clay soils, outcrops	GAV, TEM		✓			
Mojave tarplant	<i>Deinandra</i> [<i>Hemizonia</i>] <i>mohavensis</i>	Clay or silty streams	SJMTS and foothills	✓				
mud nama	<i>Nama stenocarpum</i>	Marshes	SJRIV near Gilman	✓				
Munz's mariposa lily	<i>Calochortus palmeri</i> var. <i>munzii</i>	Mountains, chaparral	SJMTS		✓			
Munz's onion	<i>Allium munzii</i>	Clay soils in SS / CHAP / Grasslands	GAV, TEM, SAMTS, SKUNK, SKIN			✓		
Nevin'a barberry	<i>Berberis nevinii</i>	Course soils in chaparral	Varies			✓		
ocellated Humboldt lily	<i>Lilium humboldtii</i> <i>ocellatum</i>	Mountain riparian	SAMTS, Palomar Mts.	✓				
Orcutt's brodiaea	<i>Brodiaea orcuttii</i>	Mesic grasslands and pools	SRP	✓				
Palmer's grapplinghook	<i>Harpagonella palmeri</i>	Clay soils in SS / CHAP / Grasslands	varies		✓			
Palomar monkeyflower	<i>Mimulus diffusus</i>	Sandy soils in upper elev. CHAP, forests	SAMTS, SJMTS		✓			
Parish's brittle-scale	<i>Atriplex parishii</i>	Alkaline soils	SALT, lower SJRIV	✓				
Parish's meadowfoam	<i>Limnanthes gracilis</i> var. <i>parishii</i>	Ephemeral wetlands	SRP	✓				
Parry's spine flower	<i>Chorizanthe parryi</i> var. <i>parryi</i>	Alluvial scrub	Varies		✓			
Payson'r jewelflower	<i>Caulanthus simulans</i>	Pinyon-Juniper, chaparral, sage scrub	Agunaga area			✓		
peninsular spine flower	<i>Chorizanthe leptotheca</i>	Dry open areas	Varies		✓			

APPENDIX B.
 Target Plant Species

Plummer's mariposa lily	<i>Calochortus plummerae</i>	Varies	SJMTS, Jurupa Hills		✓			
prostrate navarretia	<i>Navarretia prostrata</i>	Sage scrub, vernal pools, grasslands	SRP			✓		
prostrate spine flower	<i>Chorizanthe procumbrens</i>	Sandy openings in CHAP / SS	SAMTS		✓			
Rainbow manzanita	<i>Arctostaphylos rainbowensis</i>	Iron rich soils in chaparral	SRP, GAV, TEM, Wildomar area		✓			
round-leaved filaree	<i>Erodium macrophyllum</i>	Grasslands	GAV, DVA, TEM	✓				
San Diego ambrosia	<i>Ambrosia pumila</i>	Grasslands	Alberhill, Lake Street, SKUNK	✓				
San Diego button-celery	<i>Eryngium aristulatum var. parishii</i>	Vernal pools	SRP	✓				
San Jacinto Mountains bedstraw	<i>Galium angustifolium jacinticum</i>	Forests	SJMTS	✓				
San Jacinto Valley crownscale	<i>Atriplex coronatum var. notatior</i>	Floodplains	MYSTIC, SALT	✓				
San Miguel savory	<i>Satureja chandleri</i>	Varies	SRP	✓				
Santa Ana River woollystar	<i>Eriastrum densifolium sanctorum</i>	Alluvial scrub (immature)	SARIV	✓				
shaggy-haired alumroot	<i>Heuchera hirsutissima</i>	Forests	SJMTS	✓				
slender-horned spine flower	<i>Dodecahema leptoceras</i>	Alluvial scrub (mature)	Indian Creek, VAIL area	✓				
small-flowered microserius	<i>Microserius douglasii var. platycarpha</i>	Clay foothills and grasslands	SRP, Bachelor Mt. area	✓				
small-flowered morning-glory	<i>Convolvulus simulans</i>	Clay and serpentine soils in grasslands	Varies	✓				
smooth tarplant	<i>Centromadia pungens (Hemizonia pungens laevis)</i>	Varies	Varies	✓				
spreading navarretia	<i>Navarretia fossalis</i>	Vernal pools and ditches	SALT, SJRIV	✓				
sticky-leaved dudleya	<i>Dudleya viscida</i>	Rocky canyon slopes	SAMTS		✓			
thread-leaved brodiaea	<i>Brodiaea filifolia</i>	Alkali pools, mesic grasslands	SJRIV, SALT, SRP	✓				
Vail Lake ceanothus	<i>Ceanothus ophiochilus</i>	Dry ridgetops in chaparral	VAIL area	✓				
vernal barley	<i>Hordeum intercedens</i>	Vernal pools and mesic grasslands	SALT, SJRIV	✓				
Wright's trichocoronis	<i>Trichocoronis wrightii var. wrightii</i>	Alkali vernal pools and flats	SJRIV, MYSTIC	✓				
Yucaipa onion	<i>Allium marvinii</i>	Clay soils in chaparral	Beaumont area		✓			



APPENDIX - C. ODEGAARD PRPERTY MAP



Appendix - D



Corner of Leo Road and El Ranchito Road looking east.



Northwest corner of reserve looking southeast.