

**INITIAL MANAGEMENT EVALUATION REPORT
(IMER)**

For

SANTOS PROPERTY



**Prepared by
Natural Resources Management Section
Riverside County Parks**

December, 2007

**Riverside County
Multi-Species Habitat Conservation Plan
Initial Management Evaluation Report
Habitat Management Unit: Sage**

RESERVE NAME: **SAGE 3**
ACQUISITION NAME: SANTOS
PROJECT ID NUMBER: RC22000089

1. SITE PHYSICAL DESCRIPTION

1.A. Site Physical Location & Access:

The Santos property consists of four separate parcels. From west to east and north to south they are: SANTOS-A (579-430-002), SANTOS-B (579-430-005), SANTOS-C (579-430-003) and SANTOS-D (579-430-006). All four parcels lie east of the City of Aguanga, south of the Cahuilla Indian Reservation, west of Anza-Borrego Desert State Park and north of State Highway 79.

Parcels A, B, C and D can be accessed from Howard Road, Holly Ann Drive and Becker Road.

The parcels' general locations are:

PARCEL	UTM (NAD-27, meters)	STATE PLAIN (NAD-83, feet)	TOWNSHIP / RANGE (Beauty Mt. Quad)
A	526261E 3703955N	6418900E 2117334N	T8S, R3E, Sec.18, SW, NW
B	526679E 3703970N	6420261E 2117358N	T8S, R3E, Sec. 18, SW, NE
C	526264E 3703765N	6418900E 2116710N	T8S, R3E, Sec. 18, SW, NW
D	526679E 3703786N	6420261E 2116765N	T8S, R3E, Sec. 18, SW, NE

1.B. Acreage:

Parcel A	19.33 Acres
Parcel B	20.11 Acres
Parcel C	18.14 Acres
Parcel D	19.10 Acres
Total	76.95

1.C. Topography:

The majority of the property is comprised of moderately to steeply rolling hills with large rocks and boulders scattered throughout. Given the location and topography of the site, the majority of the property is difficult to fully access.

1.D. Surrounding Land Use:

The area surrounding the Santos property generally supports natural open-space. The surrounding area includes some low-density housing, which primarily consists of modular homes. The majority of the surrounding residents participate in equestrian activities and some OHV activities.

2. BIOLOGICAL ASSESSMENT

2.A. Plant Communities:

All four parcels support dense chaparral, mostly comprised of ribbonwood/redshank (*Adenostoma sparsifolium*) and common sagebrush (*Artemisia tridentata*).

In disturbed areas, species composition changes to non-native annual grasses (e.g., *Bromus spp.*).

2.B. Likely Animal Species:

Given the natural open-space environment and lack of human encroachment, the likelihood of finding species associated with the present habitat is very high. Potential species could include: coyote (*Canis latrans*), bobcat (*Lynx rufus*), mountain lion (*Puma concolor*), mule deer (*Odocoileus hemionus*), spotted skunk (*Spilogale putorius*), woodrats (*Neotoma spp.*), various field mice (*Peromyscus spp.*), brush rabbit (*Sylvilagus bachmani*), side-blotched lizard (*Uta stansburiana*), western fence lizard (*Sceloporus occidentalis*), granite spiny lizard (*Sceloporus orcuttii*), coachwhip (*Masticophis flagellum*), southern Pacific rattlesnake (*Crotalus viridis*), and rosy boa (*Lichanura trivirgata*).

2.C. Other Habitat or Wildlife Features:

The Santos property adds important wildlife habitat to the southern section of the County. The presence of significant rock outcrops and large boulders is considered suitable habitat for several bat species.

2.D. Target Species:

Please see Appendix A for a qualitative checklist of MSHCP target animal species, and Appendix B. for plant species.

3. IMPACTS AND CURRENT CONDITIONS

3.A. Current Uses:

The Santos site is currently not being used and remains in a relatively natural open-space state. Historic use of the site seems to have been minimal based on the current natural condition of the site.

3.B. Fencing & Access Controls:

The Santos property is currently not fenced. Gates and/ or fencing will be needed to control the impacts from OHV activity within the property. Problem areas that will require gates and/or fencing have been identified in Appendix C - Site Map.

3.C. Off-Road Vehicle (OHV) Use / Damage:

Established OHV trails do exist on-site and fencing concerns may need to be addressed if OHV use is shown to have adverse impacts within the conservation area.

3.D. Illegal Dumping:

No illegal dumping was noted in any of the parcels, but illegal dumping has been observed to occur within the area.

3.E. Target Shooting & Hunting:

The site is currently not being used for target shooting or hunting; however, such activities do occur within surrounding properties.

3.F. Weed Abatement:

Weeds along roadsides will most likely be removed through hand work and/or string trimmers. Overall, weed abatement is currently not needed within the reserve.

3.G. Other Recreational Opportunities and Constraints:

None.

3.H. Special Conditions of Purchase:

None reported.

4. RESTORATION OPPORTUNITIES

4.A. Target Species:

Currently, no restoration opportunities are needed or foreseen.

4.B. Multi-Species Aspects:

No aspects foreseen as long as the site remains pristine and there is no increase in human activity or wildfires.

5. RERSERVE DESIGN AND CONNECTIVITY

5.A. Boundary, Edge and Community Location:

Currently, low-density ranchettes are scattered around the property. Little edge effects are foreseen due to the large size of the property and continuity of the habitat in the area.

5.B. Connectivity:

Collectively, the acquired parcels add to the overall goal of preserving habitat and establishing different core areas while ultimately connecting them through corridors. The Santos property will help establish Proposed Core Area 6, which will help develop open-space land continuity towards the Palomar Mountain Range to the west, Anza-Borrego State Park and Reserve to the east and Existing Core Area L to the south.

5.C. Nearby Existing Reserves:

The JPR INC. (6), Walker, DeJesus and the JPR INC. (Silverado) properties are located within a $\frac{3}{4}$ mile radius of the Santos property.

The Walker and DeJesus property are directly adjacent to the Santos property. Collectively the three properties provide 189.11 acres of contiguous open-space habitat.

The Bureau of Land Management (BLM) owns land in the immediate area surrounding the Santos property. The closest BLM property borders the Santos property on the southern border.

5.D. Priority for Future Purchases:

Priority for future purchases should be given to those areas that will most likely be developed in the near future. The areas of most concern are found to the west of the Santos property, where open-space land is being replaced with housing developments. If concerns are to purchase land in the immediate area, then the

parcels between the Santos property and JPR INC. (6), as well as the land between the Santos property and JPR INC. (Silverado), should be a priority. These areas will establish continuity between the parcels and limit the chance of fragmentation from future development.

6. INTERIM MANAGEMENT

6.A. Public Issues:

Given the remoteness of the site and lack of on-site activity there are no public issues.

6.B. Biological Issues:

No biological issues are foreseen.

6.C. Recommended Interim Management Scenario:

- 1) If on-site activity increases install gates and/or fencing along main roads where access into the site is possible (Parcels A, C, & D). The boundary should also be signed with a moderately aggressive sign.
- 2) The areas should be patrolled initially every week to determine any new impacts and the frequency of visitors. If no significant impacts occur, patrols could be relaxed to once a month.
- 3) Maintain fencing and signs as needed.

7. MAPS – Appendix C.

8. SITE PHOTOGRAPHS – Appendix D.

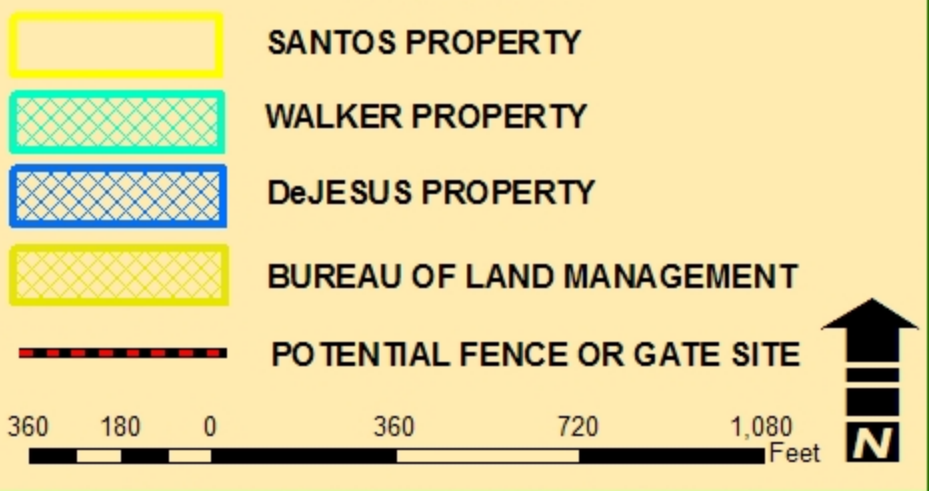
COMMON NAME	SCIENTIFIC NAME	HABITAT	NOT PRESENT	NOT LIKELY PRESENT	POSSIBLY PRESENT	LIKELY PRESENT	CONFIRMED PRESENT
INVERTEBRATES							
RIVERSIDE FAIRY SHRIMP	<i>Streptocephalus woottoni</i>	Vernal Pool	✓				
SANTA ROSA PLATEAU FAIRY SHRIMP	<i>Linderiella santarosae</i>	Vernal Pool	✓				
VERNAL POOL FAIRY SHRIMP	<i>Branchinecta lynchi</i>	Vernal Pool	✓				
INSECTS							
QUINO CHECKERSPOT BUTTERFLY	<i>Euphydryas editha quino</i>	Sage Scrub			✓		
DELHI SANDS FLOWER-LOVING FLY	<i>Rhaphiomidas terminus abdominalis</i>	Delhi Sands	✓				
FISH							
ARROYO CHUB	<i>Gila orcuttii</i>	Aquatic	✓				
SANTA ANA SUCKER	<i>Catostomus santaanae</i>	Aquatic	✓				
AMPHIBIANS							
COAST RANGE NEWT	<i>Taricha torosa tarosa</i>	Riparian / Intermittant Streams		✓			
ARROYO TOAD	<i>Bufo californicus</i>	Riparian / Well-watered Streams	✓				
WESTERN SPADEFOOT TOAD	<i>Scaphiopus hammondi</i>	Temp. Pools / Surrounding Uplands		✓			
CALIFORNIA RED-LEGGED FROG	<i>Rana aurora draytonii</i>	Permanent Streams and Rivers	✓				
MOUNTAIN YELLOW-LEGGED FROG	<i>Rana mucosa</i>	Mountain Streams / Rivers / Lakes	✓				
REPTILES							
WESTERN POND TURTLE	<i>Clemmys marmorata pallida</i>	Aquatic	✓				
SAN DIEGO COAST HORNED LIZARD	<i>Phrynosoma coronatum blainvillii</i>	Sage Scrub / Grasslands			✓		
SOUTHERN SAGEBRUSH LIZARD	<i>Sceloporus graciosus vandenburgianus</i>				✓		
GRANITE SPINY LIZARD	<i>Sceloporus orcuttii</i>	Sage Scrub with Rocks			✓		
GRANITE NIGHT LIZARD	<i>Xantusia henshawi henshawi</i>	Rocky sage scrub & chaparral			✓		
ORANGE-THROATED WHIPTAIL	<i>Cnemidophorus hyperythrus beldingii</i>	Sage Scrub			✓		
SAN DIEGO BANDED GECKO	<i>Coleonyx variegatus abbottii</i>	Sage Scrub / Chaparral			✓		
SAN BERNARDINO MOUNTAIN KINGSSNAKE	<i>Lampropeltis zonata parviruba</i>	Upper Elev. Chaparral & Mountains	✓				
SAN DIEGO MOUNTAIN KINGSSNAKE	<i>Lampropeltis zonata pulchra</i>	Upper Elev. Chaparral & Mountains			✓		
SOUTHERN RUBBER BOA	<i>Charina bottae umbratica</i>	Mountains		✓			
NORTHERN RED DIAMOND RATTLESNAKE	<i>Crotalus ruber ruber</i>	Sage Scrub / Chaparral		✓			
BIRDS							
DOUBLE-CRESTED CORMORANT	<i>Phalacrocorax auritus</i>	Aquatic	✓				
AMERICAN BITTERN	<i>Botaurus lentiginosus</i>	Marsh	✓				
GREAT BLUE HERON	<i>Ardea herodias</i>	Waterways & Surrounding Areas	✓				
BLACK-CROWNED NIGHT HERON	<i>Nycticorax nycticorax</i>	Waterways & Surrounding Areas	✓				
WHITE-FACED IBIS	<i>Plegadis chihi</i>	Waterways & Surrounding Areas	✓				
MOUNTAIN PLOVER	<i>Charadrius montanus</i>	Waterways & Surrounding Areas	✓				
TURKEY VULTURE	<i>Carthartes aura</i>	Cosmopolitan				✓	
GOLDEN EAGLE	<i>Aquila chrysaetos</i>	Cosmopolitan			✓		
BALD EAGLE	<i>Haliaeetus leucocephalus</i>	Lakes	✓				
WHITE-TAILED KITE	<i>Elanus leucurus</i>	Brushy Grassland			✓		
NORTHERN HARRIER	<i>Circus cyaneus</i>	Brushy Grassland			✓		
SHARP-SHINNED HAWK	<i>Accipiter striatus</i>	Woodlands & Surrounding Areas		✓			
COOPER'S HAWK	<i>Accipiter cooperii</i>	Woodlands & Surrounding Areas		✓			
NORTHERN GOSHAWK	<i>Accipiter gentilis</i>	Mountains		✓			
SWAINSON'S HAWK	<i>Buteo swainsoni</i>	Open Country		✓			
FERRUGINOUS HAWK	<i>Buteo regalis</i>	Open Country			✓		
OSPREY	<i>Pandion haliaetus</i>	Lakes	✓				
MERLIN	<i>Falco columbarius</i>	Open Woods & Surrounding Areas		✓			
PRAIRIE FALCON	<i>Falco mexicanus</i>	Open Country		✓			
PEREGRINE FALCON	<i>Falco peregrinus</i>	Open Country Near Wetlands		✓			
MOUNTAIN QUAIL	<i>Oreortyx pictus</i>	Mountains			✓		
WESTERN YELLOW-BILLED CUCKOO	<i>Coccyzus americanus occidentalis</i>	Riparian	✓				
CALIFORNIA SPOTTED OWL	<i>Stryx occidentalis occidentalis</i>	Mountains	✓				
BURROWING OWL	<i>Athene cunicularia hypugaea</i>	Open Country		✓			
BLACK SWIFT	<i>Cypseloides niger</i>	Cliffs Near Water	✓				
WILLIAMSON'S SAPSUCKER	<i>Sphyrapicus thyroideus</i>	Mountains	✓				

DOWNY WOODPECKER	<i>Picoides pubescens</i>	Areas With Trees	✓				
SOUTHWESTERN WILLOW FLYCATCHER	<i>Empidonax traillie extimus</i>	Riparian		✓			
CALIFORNIA HORNED LARK	<i>Eremophila alpestris acta</i>	Open Grasslands & Sage Scrub		✓			
TREE SWALLOW	<i>Tachycineta bicolor</i>	Wooded Areas Near Water	✓				
PURPLE MARTIN	<i>Progne subis</i>	Open Country		✓			
CACTUS WREN	<i>Campylorhynchus brunneicapillus</i>	Sage Scrub With Cactus		✓			
COASTAL CALIFORNIA GNATCATCHER	<i>Poliopitila californica californica</i>	Sage Scrub		✓			
LOGGERHEAD SHRIKE	<i>Lanius lucovicianus</i>	Cosmopolitan				✓	
LEAST BELL'S VIREO	<i>Vireo bellii pusillus</i>	Extensive Riparian	✓				
NASHVILLE WARBLER	<i>Vermivora ruficapilla</i>	Riparian	✓				
YELLOW WARBLER	<i>Dendroica petechia brewsteri</i>	Riparian	✓				
McGILLIVRAY'S WARBLER	<i>Oporornis tolmiei</i>	Riparian	✓				
WILSON'S WARBLER	<i>Wilsonia pusilla</i>	Riparian	✓				
YELLOW-BREASTED CHAT	<i>Icteria virens</i>	Riparian	✓				
GRASSHOPPER SPARROW	<i>Ammodramus savannarum</i>	Grasslands		✓			
BELL'S SAGE SPARROW	<i>Amphispiza bellii bellii</i>	Chaparral				✓	
SO. CAL. RUFOUS-CROWNED SPARROW	<i>Aimophila ruficeps canescens</i>	Sage Scrub / Chaparral Slopes				✓	
LINCOLN'S SPARROW	<i>Melospiza lincolni</i>	Mountain Bogs & Meadows	✓				
TRICOLORED BLACKBIRD	<i>Agelaius tricolor</i>	Marsh	✓				
MAMMALS							
BOBCAT	<i>Lynx rufus</i>	Cosmopolitan				✓	
MOUNTAIN LION	<i>Felis concolor</i>	Remote Mountainous Areas				✓	
LONG-TAILED WEASEL	<i>Mustela frenata</i>	Open Country				✓	
COYOTE	<i>Canis latrans</i>	Cosmopolitan					✓
BRUSH RABBIT	<i>Sylvilagus bachmani</i>	Chaparral					✓
SAN DIEGO BLACK-TAILED JACKRABBIT	<i>Lepus californicus bennettii</i>	Open Country				✓	
LOS ANGELES POCKET MOUSE	<i>Perognathus longimembris brevisus</i>	Streambeds & Sandy Areas		✓			
NORTHWESTERN SAN DIEGO POCKET MOUSE	<i>Chaetodipus fallax fallax</i>	Sage Scrub / Chaparral					✓
AGUNAGA KANGAROO RAT	<i>Dipodomys merriami collinus</i>	Sandy Areas Near Aguanga				✓	
SAN BERNARDINO KANGAROO RAT	<i>Dipodomys merriami parvus</i>	Sandy Areas / San Jacinto River		✓			
DELZURA KANGAROO RAT	<i>Dipodomys simulans</i>	Sage Scrub / Chaparral				✓	
STEPHENS' KANGAROO RAT	<i>Dipodomys stephensi</i>	Open Country				✓	
SAN DIEGO DESERT WOODRAT	<i>Neotoma lepida intermedia</i>	Sage Scrub / Chaparral					✓
SAN BERNARDINO FLYING SQUIRREL	<i>Glaucomys sabrinus californicus</i>	Mountains	✓				

COMMON NAME	SCIENTIFIC NAME	HABITAT(S)	GENERAL LOCATIONS	NOT PRESENT	NOT LIKELY PRESENT	POSSIBLY PRESENT	LIKELY PRESENT	CONFIRMED PRESENT
beautiful hulsea	<i>Hulsea vestita</i> var. <i>callicarpa</i>	Mid-level mountains	SJMTS	✓				
Brand's phacelia	<i>Phacelia stellaris</i>	Sandy benches	SARIV		✓			
California beardtongue	<i>Penstemon californicus</i>	Mid-level mountains	SJMTS, DVA, SRP		✓			
California bedstraw	<i>Galium californicum</i> var. <i>primum</i>	Upper elevation chaparral	SJMTS, DVA, San Timoteo			✓		
California black walnut	<i>Juglans californica</i> var. <i>californica</i>	Streams	SRP, Pedley		✓			
California muhly	<i>Muhlenbergia californica</i>	Riparian / seeps	Sage area, Prado area, GAV, TEM		✓			
California Orcutt grass	<i>Orcuttia californica</i>	Vernal pools	SALT, SRP, SKUNK	✓				
chickweed oxytheca	<i>Oxytheca caryophylloides</i>	Mountains	SJMTS		✓			
Cleveland's bush monkeyflower	<i>Mimulus clevelandii</i>	Upper elevation chaparral	SAMTS			✓		
cliff cinquefoil	<i>Potentilla rimicola</i>	High elevation rocks	SJMTS		✓			
Coulter's goldfields	<i>Lasthenia glabrata</i> var. <i>coulteri</i>	Alkali vernal plains	SJVAL, Perris Valley, Nichols Rd.	✓				
Coulter's matilija poppy	<i>Romneya coulteri</i>	Dry washes and canyons	GAV, TEM			✓		
Davidson's saltscale	<i>Atriplex sereana</i> var. <i>davidsonii</i>	Alkali vernal plains and pools	SJVAL, Perris Valley, Nichols Rd.	✓				
Englemann oak	<i>Quercus engelmannii</i>	Mesic fans and slopes	SRP, SAMTS, GAV		✓			
Fish's mildwort	<i>Polygala comuta</i> var. <i>fishiae</i>	Oak riparian woodlands	SRP, SAMTS, Temecula area		✓			
graceful tarplant	<i>Holocarpa virgata</i> <i>elongata</i>	Level grasslands and shrublands	SRP		✓			
Hall's monardella	<i>Monardella macrantha</i> var. <i>hallii</i>	Mountain foothills, dry slopes, ridges	SAMTS, Pine Cove area			✓		
Hammitt's clay-cress	<i>Sibaropsis hammittii</i>	Clay grasslands	SAMTS		✓			
heart-leaved pitcher plant	<i>Lepechinia cardiophylla</i>	Forests	SAMTS	✓				
intermediate mariposa lily	<i>Calochortus weedii</i> var. <i>intermedius</i>	Dry rocky slopes in SS / CHAP, burned areas	SAMTS, DVA, VAIL			✓		
Jaegar's milk-vetch	<i>Astragalus pachypus</i> var. <i>jaegeri</i>	Dry areas	VAIL, Agunaga area, Protrero area			✓		
Johnston's rock cress	<i>Arabis johnstonii</i>	Upper elevation chaparral, forests	SJMTS		✓			
lemon lily	<i>Lilium parryi</i>	Mountain wet places	SJMTS		✓			
little mouse tail	<i>Myosaurus minimum</i> <i>apus</i>	Vernal pools, alkali sinks	SALT, SRP, GAV, MARB		✓			
long-spined spine flower	<i>Chorizanthe polygonoides</i> var. <i>longispina</i>	Rocky clay soils	GAV, TEM, SAMTS, SRP		✓			
many-stemmed dudleya	<i>Dudleya multicaulis</i>	Rocky clay soils, outcrops	GAV, TEM			✓		
Mojave tarplant	<i>Deinandra</i> [<i>Hemizonia</i>] <i>mohavensis</i>	Clay or silty streams	SJMTS and foothills		✓			
mud nama	<i>Nama stenocarpum</i>	Marshes	SJRIV near Gilman	✓				
Munz's mariposa lily	<i>Calochortus palmeri</i> var. <i>munzii</i>	Mountains, chaparral	SJMTS			✓		
Munz's onion	<i>Allium munzii</i>	Clay soils in SS / CHAP / Grasslands	GAV, TEM, SAMTS, SKUNK, SKIN			✓		
Nevin's barberry	<i>Berberis nevinii</i>	Course soils in chaparral	Varies			✓		
ocellated Humboldt lily	<i>Lilium humboldtii</i> <i>ocellatum</i>	Mountain riparian	SAMTS, Palomar Mts.		✓			
Orcutt's brodiaea	<i>Brodiaea orcuttii</i>	Mesic grasslands and pools	SRP		✓			
Palmer's grapplinghook	<i>Harpagonella palmeri</i>	Clay soils in SS / CHAP / Grasslands	varies			✓		
Palomar monkeyflower	<i>Mimulus diffusus</i>	Sandy soils in upper elev. CHAP, forests	SAMTS, SJMTS			✓		
Parish's brittle scale	<i>Atriplex parishii</i>	Alkaine soils	SALT, lower SJRIV		✓			
Parish's meadowfoam	<i>Limnanthes gracilis</i> var. <i>parishii</i>	Ephemeral wetlands	SRP	✓				

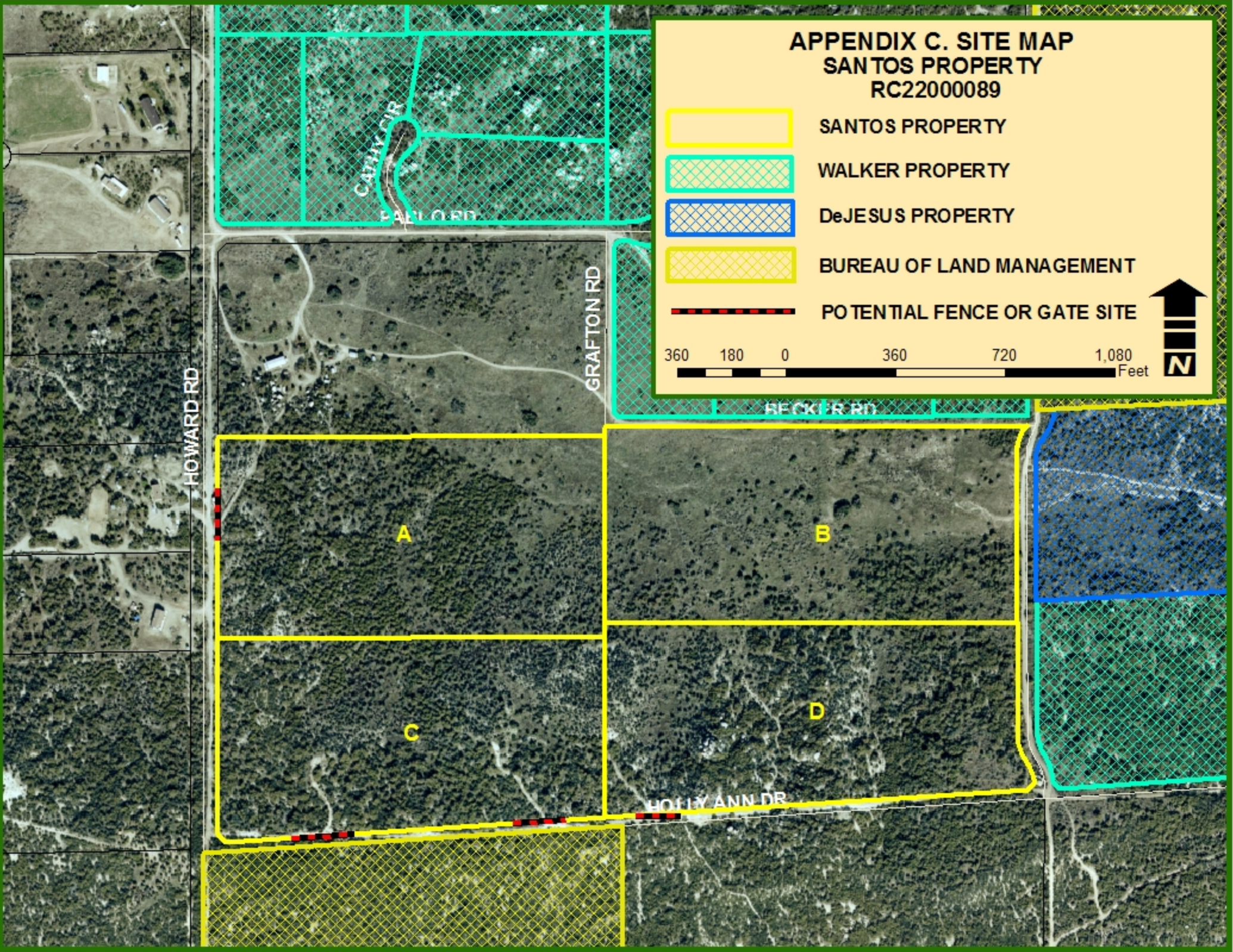

Parry's spine flower	<i>Chorizanthe parryi</i> var. <i>parryi</i>	Alluvial scrub	Varies		✓			
Payson'r jewelflower	<i>Caulanthus simulans</i>	Pinyon-Juniper, chaparral, sage scrub	Agunaga area			✓		
peninsular spine flower	<i>Chorizanthe leptotheca</i>	Dry open areas	Varies			✓		
Plummer's mariposa lily	<i>Calochortus plummerae</i>	Varies	SJMTS, Jurupa Hills			✓		
prostrate navarretia	<i>Navarretia prostrata</i>	Sage scrub, vernal pools, grasslands	SRP			✓		
prostrate spine flower	<i>Chorizanthe procumbrens</i>	Sandy openings in CHAP / SS	SAMTS			✓		
Rainbow manzanita	<i>Arctostaphylos rainbowensis</i>	Iron rich soils in chaparral	SRP, GAV, TEM, Wildomar area			✓		
round-leaved filaree	<i>Erodium macrophyllum</i>	Grasslands	GAV, DVA, TEM		✓			
San Diego ambrosia	<i>Ambrosia pumila</i>	Grasslands	Alberhill, Lake Street, SKUNK		✓			
San Diego button-celery	<i>Eryngium aristulatum</i> var. <i>parishii</i>	Vernal pools	SRP	✓				
San Jacinto Mountains bedstraw	<i>Galium angustifolium jacinticum</i>	Forests	SJMTS	✓				
San Jacinto Valley crownscale	<i>Atriplex coronatum</i> var. <i>notatior</i>	Floodplains	MYSTIC, SALT	✓				
San Miguel savory	<i>Satureja chandleri</i>	Varies	SRP			✓		
Santa Ana River woollystar	<i>Eriastrum densifolium sanctorum</i>	Alluvial scrub (immature)	SARIV		✓			
shaggy-haired alumroot	<i>Heuchera hirsutissima</i>	Forests	SJMTS	✓				
slender-horned spine flower	<i>Dodecahema leptoceras</i>	Alluvial scrub (mature)	Indian Creek, VAIL area		✓			
small-flowered microserius	<i>Microserius douglasii</i> var. <i>platycarpa</i>	Clay foothills and grasslands	SRP, Bachelor Mt. area		✓			
small-flowered morning-glory	<i>Convolvulus simulans</i>	Clay and serpentine soils in grasslands	Varies		✓			
smooth tarplant	<i>Centromadia pungens</i>	Varies	Varies			✓		
spreading navarretia	<i>Navarretia fossalis</i>	Vernal pools and ditches	SALT, SJRIV	✓				
sticky-leaved dudleya	<i>Dudleya viscida</i>	Rocky canyon slopes	SAMTS		✓			
thread-leaved brodiaea	<i>Brodiaea filifolia</i>	Alkali pools, mesic grasslands	SJRIV, SALT, SRP	✓				
Vail Lake ceanothus	<i>Ceanothus ophiochilus</i>	Dry ridgetops in chaparral	VAIL area			✓		
vernal barley	<i>Hordeum intercedens</i>	Vernal pools and mesic grasslands	SALT, SJRIV	✓				
Wright's trichocoronis	<i>Trichocoronis wrightii</i> var. <i>wrightii</i>	Alkali vernal pools and flats	SJRIV, MYSTIC	✓				
Yucaipa onion	<i>Allium marvinii</i>	Clay soils in chaparral	Beaumont area			✓		

**APPENDIX C. SITE MAP
SANTOS PROPERTY
RC22000089**



SANTOS PROPERTY
WALKER PROPERTY
DeJESUS PROPERTY
BUREAU OF LAND MANAGEMENT
POTENTIAL FENCE OR GATE SITE

360 180 0 360 720 1,080 Feet



APPENDIX D.



Southeast corner looking northwest.



Eastern border of parcel B looking west.

APPENDIX D.



Northern border of parcel B looking south.



Western border of parcel C looking east.