

**INITIAL MANAGEMENT EVALUATION REPORT
(IMER)**

For

ELSINORE LAKEVIEW ESTATES PROPERTY



**Prepared by
Natural Resources Management Section
Riverside County Parks**

January, 2009

**Riverside County
Multi-Species Habitat Conservation Plan
Initial Management Evaluation Report
Habitat Management Unit: MENIFEE**

RESERVE NAME: MEN 1
ACQUISITION NAME: ELSINORE LAKEVIEW ESTATES #2 DONATION
PROJECT ID NUMBER: RC21000029

1. SITE PHYSICAL DESCRIPTION

1.A. Site Physical Location & Access:

The Elsinore Lakeview Estates property consists of 2 portioned parcels. From west to east they are: Elsinore Lakeview Estates-A (a.k.a. Elsinore Lakeview Villas, APN 363-190-008) and Elsinore Lakeview Estates-B (APN 363-190-015). Both parcels are located east of Interstate 15, south of Railroad Canyon Road, west of Birchwood drive and north of Malaga Road.

Both parcels can be accessed from Canyon Drive, which terminates at Elsinore Lakeview Estates-A.

The parcels' general locations are:

PARCEL	UTM (NAD-27, meters)	STATE PLANE (NAD-83, feet)	TOWNSHIP/RANGE/SECTION (Elsinore Quad)
A	473418E 3724220N	6245970E 2185983N	T6S, R4E, Section 10, SW1/4
B	473618E 3724481N	6246606E 2185983N	T6S, R4E, Section 10, SW1/4

1.B. Acreage:

Parcel A	76.66 Acres
Parcel B	31.02 Acres
Total	107.68 Acres

1.C. Topography:

The majority of the property is comprised of steeply rolling hills/mountains with large rocks and boulders scattered throughout. A small low-land area exists between two ridge lines. Given the location and topography of the site, the majority of the property is difficult to fully access.

1.D. Surrounding Land Use:

The area surrounding the Elsinore Lakeview Estates property generally supports natural open-space. The surrounding area includes some high-density housing and retail stores. The majority of the surrounding residents participate in OHV activities.

2. BIOLOGICAL ASSESSMENT

2.A. Plant Communities:

Both parcels support a coastal sage scrub plant community, mostly comprised of California buckwheat (*Eriogonum fasciculatum*) and brittlebush (*Encelia fairinosa*).

In disturbed areas, species composition changes to non-native annual grasses (e.g., *Bromus spp.*).

2.B. Likely Animal Species:

Given the natural open-space environment and lack of human encroachment, the likelihood of finding species associated with the present habitat is very high. Potential species could include: coyote (*Canis latrans*), bobcat (*Lynx rufus*), spotted skunk (*Spilogale putorius*), woodrats (*Neotoma spp.*), various field mice (*Peromyscus spp.*), brush rabbit (*Sylvilagus bachmani*), side-blotched lizard (*Uta stansburiana*), western fence lizard (*Sceloporus occidentalis*), southern Pacific rattlesnake (*Crotalus viridis*), and red diamond rattlesnake (*Crotalus ruber*).

2.C. Other Habitat or Wildlife Features:

The Elsinore Lakeview Estates property adds important wildlife habitat to the western section of county. The presence of significant rock outcrops and large boulders may be considered suitable habitat for several bat species.

2.D. Target Species:

Please see Appendix A for a qualitative checklist of MSHCP target animal species, and Appendix B. for plant species.

3. IMPACTS AND CURRENT CONDITIONS

3.A. Current Uses:

The Elsinore Lakeview Estates property is currently being used as an illegal dump site, shooting area and OHV riding area. However, the northern section of the property remains untouched. The majority of the OHV riding is found to occur

in the low-land area. Historic use of the site seems to have been minimal based on the somewhat natural condition of the site. Direct impacts are from OHV use, illegal dumping and target shooting.

3.B. Fencing & Access Controls:

The Elsinore Lakeview Estates property is currently not fenced. Gates and/or fencing will be needed to control the impacts from OHV activity within the property. Problem areas that will require gates and/or fencing have been identified in Appendix C - Site Map.

3.C. Off-Road Vehicle (OHV) Use / Damage:

Established OHV trails exist on-site and fencing concerns will need to be addressed. The majority of the damaged area is found in the low-land flat area between the two major ridges.

3.D. Illegal Dumping:

Illegal dumping is found throughout the majority of the low-land flat area. The majority of the illegal dumping has since been cleaned up by Parks maintenance workers, which was paid for using escrow funds.

3.E. Target Shooting & Hunting:

The site is currently being used for target shooting or hunting.

3.F. Weed Abatement:

Weeds along Railroad Canyon Road will most likely need to be removed through hand work and/or string trimmers. Overall, weed abatement is currently not needed within the property.

3.G. Other Recreational Opportunities and Constraints:

None.

3.H. Special Conditions of Purchase:

None reported.

4. RESTORATION OPPORTUNITIES

4.A. Target Species:

Restoration of the damaged sage scrub in the low-land area may need to be completed to ensure that the non-native grasses do not out-compete surrounding

sage scrub habitat. Minimum restoration efforts would include limiting the growth of non-native grasses with string trimmers or mowing and allowing the sage scrub to grow back naturally. For restoration efforts to be effective, OHV activities will need to be eliminated completely.

4.B. Multi-Species Aspects:

See above.

5. RERSERVE DESIGN AND CONNECTIVITY

5.A. Boundary, Edge and Community Location:

Currently, low-density ranchettes and high-density retail and housing are scattered around the property. Little edge effects are foreseen due to the large size of the property and continuity of the habitat in the area.

5.B. Connectivity:

Collectively, the acquired parcels add to the overall goal of preserving habitat and establishing important links between proposed Core Areas. The Elsinore Lakeview Estates property will help establish Proposed Linkage 8, which will link both Proposed Core Area 1 and 2 to Proposed Core Area 3.

5.C. Nearby Existing Reserves:

The Rullo, Archer, South Shore and the White Rock properties are located within a 2.25 mile radius of the Elsinore Lakeview Estates property.

5.D. Priority for Future Purchases:

Priority for future purchases should be given to those areas that will most likely be developed in the near future. The areas of most concern are found to the east of the Elsinore Lakeview Estates property, where open-space land is being replaced with housing developments. If priorities are to purchase land in the immediate area, then the parcels between the Elsinore Lakeview Estates property and the Archer property should be taken into consideration. If purchased, the parcels will establish continuity between the properties and establish Proposed Linkage 8.

6. INTERIM MANAGEMENT

6.A. Public Issues:

Some public issues are foreseen. The majority of the public issues will have to do with those who are in support of OHV and target shooting on open-space lands.

A conscious effort will need to be made to update those who frequent open-space land to the new rules and regulations imposed by the County. Negative public reaction is expected.

6.B. Biological Issues:

No biological issues are foreseen.

6.C. Recommended Interim Management Scenario:

- 1) If on-site activity increases install gates and/or fencing along main roads where access into the site is possible (Parcel A). The boundary should also be posted with signs that state permitted uses.
- 2) The areas should be patrolled initially every week to determine any new impacts and the frequency of visitors. If no significant impacts occur, patrols could be relaxed to once a month.
- 3) Install and maintain fencing, gates and signs as needed.

7. MAPS – Appendix C.

8. SITE PHOTOGRAPHS – Appendix D.

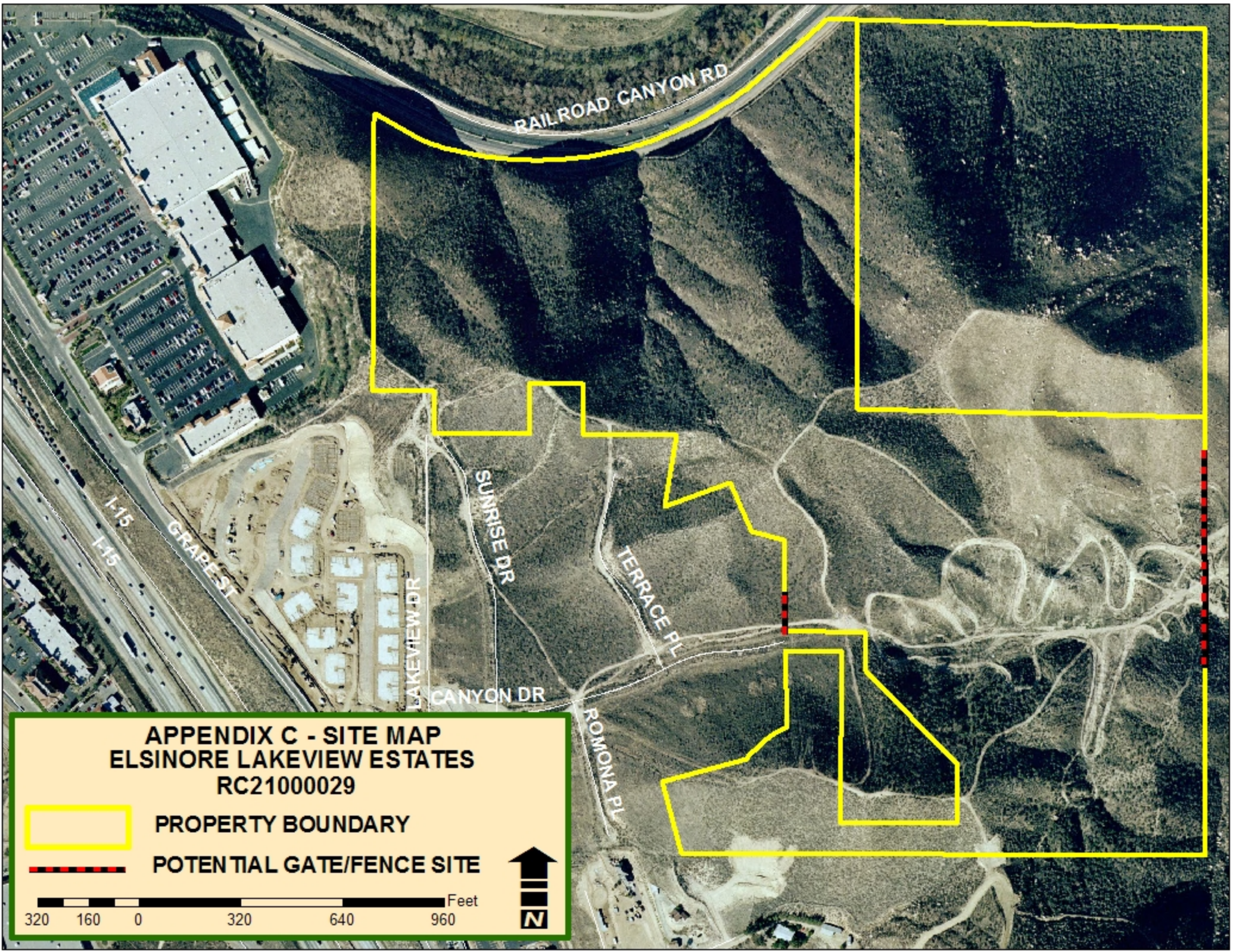
COMMON NAME	SCIENTIFIC NAME	HABITAT	NOT PRESENT	NOT LIKELY PRESENT	POSSIBLY PRESENT	LIKELY PRESENT	CONFIRMED PRESENT
INVERTEBRATES							
RIVERSIDE FAIRY SHRIMP	<i>Streptocephalus woottoni</i>	Vernal Pool	✓				
SANTA ROSA PLATEAU FAIRY SHRIMP	<i>Linderiella santarosae</i>	Vernal Pool	✓				
VERNAL POOL FAIRY SHRIMP	<i>Branchinecta lynchi</i>	Vernal Pool	✓				
INSECTS							
QUINO CHECKERSPOT BUTTERFLY	<i>Euphydryas editha quino</i>	Sage Scrub			✓		
DELHI SANDS FLOWER-LOVING FLY	<i>Rhaphiomidas terminus abdominalis</i>	Delhi Sands	✓				
FISH							
ARROYO CHUB	<i>Gila orcuttii</i>	Aquatic	✓				
SANTA ANA SUCKER	<i>Catostomus santaanae</i>	Aquatic	✓				
AMPHIBIANS							
COAST RANGE NEWT	<i>Taricha torosa tarosa</i>	Riparian / Intermittant Streams	✓				
ARROYO TOAD	<i>Bufo californicus</i>	Riparian / Well-watered Streams	✓				
WESTERN SPADEFOOT TOAD	<i>Scaphiopus hammondi</i>	Temp. Pools / Surrounding Uplands		✓			
CALIFORNIA RED-LEGGED FROG	<i>Rana aurora draytonii</i>	Permanent Streams and Rivers	✓				
MOUNTAIN YELLOW-LEGGED FROG	<i>Rana mucosa</i>	Mountain Streams / Rivers / Lakes	✓				
REPTILES							
WESTERN POND TURTLE	<i>Clemmys marmorata pallida</i>	Aquatic	✓				
SAN DIEGO COAST HORNED LIZARD	<i>Phrynosoma coronatum blainvillii</i>	Sage Scrub / Grasslands				✓	
SOUTHERN SAGEBRUSH LIZARD	<i>Sceloporus graciosus vandenburgianus</i>				✓		
GRANITE SPINY LIZARD	<i>Sceloporus orcuttii</i>	Sage Scrub with Rocks			✓		
GRANITE NIGHT LIZARD	<i>Xantusia henshawi henshawi</i>	Rocky sage scrub & chaparral			✓		
ORANGE-THROATED WHIPTAIL	<i>Cnemidophorus hyperythrus beldingii</i>	Sage Scrub				✓	
SAN DIEGO BANDED GECKO	<i>Coleonyx variegatus abbottii</i>	Sage Scrub / Chaparral			✓		
SAN BERNARDINO MOUNTAIN KINGSSNAKE	<i>Lampropeltis zonata parviruba</i>	Upper Elev. Chaparral & Mountains		✓			
SAN DIEGO MOUNTAIN KINGSSNAKE	<i>Lampropeltis zonata pulchra</i>	Upper Elev. Chaparral & Mountains	✓				
SOUTHERN RUBBER BOA	<i>Charina bottae umbratica</i>	Mountains		✓			
NORTHERN RED DIAMOND RATTLESNAKE	<i>Crotalus ruber ruber</i>	Sage Scrub / Chaparral					✓
BIRDS							
DOUBLE-CRESTED CORMORANT	<i>Phalacrocorax auritus</i>	Aquatic	✓				
AMERICAN BITTERN	<i>Botaurus lentiginosus</i>	Marsh	✓				
GREAT BLUE HERON	<i>Ardea herodias</i>	Waterways & Surrounding Areas	✓				
BLACK-CROWNED NIGHT HERON	<i>Nycticorax nycticorax</i>	Waterways & Surrounding Areas	✓				
WHITE-FACED IBIS	<i>Plegadis chihi</i>	Waterways & Surrounding Areas	✓				
MOUNTAIN PLOVER	<i>Charadrius montanus</i>	Waterways & Surrounding Areas	✓				
TURKEY VULTURE	<i>Carthartes aura</i>	Cosmopolitan				✓	
GOLDEN EAGLE	<i>Aquila chrysaetos</i>	Cosmopolitan		✓			
BALD EAGLE	<i>Haliaeetus leucocephalus</i>	Lakes		✓			
WHITE-TAILED KITE	<i>Elanus leucurus</i>	Brushy Grassland		✓			
NORTHERN HARRIER	<i>Circus cyaneus</i>	Brushy Grassland		✓			
SHARP-SHINNED HAWK	<i>Accipiter striatus</i>	Woodlands & Surrounding Areas		✓			
COOPER'S HAWK	<i>Accipiter cooperii</i>	Woodlands & Surrounding Areas		✓			
NORTHERN GOSHAWK	<i>Accipiter gentilis</i>	Mountains	✓				
SWAINSON'S HAWK	<i>Buteo swainsoni</i>	Open Country		✓			
FERRUGINOUS HAWK	<i>Buteo regalis</i>	Open Country			✓		
OSPREY	<i>Pandion haliaetus</i>	Lakes	✓				
MERLIN	<i>Falco columbarius</i>	Open Woods & Surrounding Areas		✓			
PRAIRIE FALCON	<i>Falco mexicanus</i>	Open Country		✓			
PEREGRINE FALCON	<i>Falco peregrinus</i>	Open Country Near Wetlands	✓				
MOUNTAIN QUAIL	<i>Oreortyx pictus</i>	Mountains		✓			
WESTERN YELLOW-BILLED CUCKOO	<i>Coccyzus americanus occidentalis</i>	Riparian	✓				
CALIFORNIA SPOTTED OWL	<i>Stryx occidentalis occidentalis</i>	Mountains	✓				
BURROWING OWL	<i>Athene cucularia hypugaea</i>	Open Country			✓		
BLACK SWIFT	<i>Cypseloides niger</i>	Cliffs Near Water	✓				
WILLIAMSON'S SAPSUCKER	<i>Sphyrapicus thyroideus</i>	Mountains	✓				

DOWNY WOODPECKER	<i>Picoides pubescens</i>	Areas With Trees	✓				
SOUTHWESTERN WILLOW FLYCATCHER	<i>Empidonax traillie extimus</i>	Riparian	✓				
CALIFORNIA HORNED LARK	<i>Eremophila alpestris acta</i>	Open Grasslands & Sage Scrub			✓		
TREE SWALLOW	<i>Tachycineta bicolor</i>	Wooded Areas Near Water	✓				
PURPLE MARTIN	<i>Progne subis</i>	Open Country		✓			
CACTUS WREN	<i>Campylorhynchus brunneicapillus</i>	Sage Scrub With Cactus		✓			
COASTAL CALIFORNIA GNATCATCHER	<i>Poliopitila californica californica</i>	Sage Scrub				✓	
LOGGERHEAD SHRIKE	<i>Lanius lucovicianus</i>	Cosmopolitan			✓		
LEAST BELL'S VIREO	<i>Vireo bellii pusillus</i>	Extensive Riparian	✓				
NASHVILLE WARBLER	<i>Vermivora ruficapilla</i>	Riparian	✓				
YELLOW WARBLER	<i>Dendroica petechia brewsteri</i>	Riparian	✓				
McGILLIVRAY'S WARBLER	<i>Oporornis tolmiei</i>	Riparian	✓				
WILSON'S WARBLER	<i>Wilsonia pusilla</i>	Riparian	✓				
YELLOW-BREASTED CHAT	<i>Icteria virens</i>	Riparian	✓				
GRASSHOPPER SPARROW	<i>Ammodramus savannarum</i>	Grasslands		✓			
BELL'S SAGE SPARROW	<i>Amphispiza belli belli</i>	Chaparral		✓			
SO. CAL. RUFOUS-CROWNED SPARROW	<i>Aimophila ruficeps canescens</i>	Sage Scrub / Chaparral Slopes			✓		
LINCOLN'S SPARROW	<i>Melospiza lincolni</i>	Mountain Bogs & Meadows	✓				
TRICOLORED BLACKBIRD	<i>Agelaius tricolor</i>	Marsh	✓				
MAMMALS							
BOBCAT	<i>Lynx rufus</i>	Cosmopolitan				✓	
MOUNTAIN LION	<i>Felis concolor</i>	Remote Mountainous Areas			✓		
LONG-TAILED WEASEL	<i>Mustela frenata</i>	Open Country			✓		
COYOTE	<i>Canis latrans</i>	Cosmopolitan					✓
BRUSH RABBIT	<i>Sylvilagus bachmani</i>	Chaparral				✓	
SAN DIEGO BLACK-TAILED JACKRABBIT	<i>Lepus californicus bennettii</i>	Open Country			✓		
LOS ANGELES POCKET MOUSE	<i>Perognathus longimembris breviansus</i>	Streambeds & Sandy Areas			✓		
NORTHWESTERN SAN DIEGO POCKET MOUSE	<i>Chaetodipus fallax fallax</i>	Sage Scrub / Chaparral				✓	
AGUNAGA KANGAROO RAT	<i>Dipodomys merriami collinus</i>	Sandy Areas Near Aguanga		✓			
SAN BERNARDINO KANGAROO RAT	<i>Dipodomys merriami parvus</i>	Sandy Areas / San Jacinto River	✓				
DELZURA KANGAROO RAT	<i>Dipodomys simulans</i>	Sage Scrub / Chaparral			✓		
STEPHENS' KANGAROO RAT	<i>Dipodomys stephensi</i>	Open Country			✓		
SAN DIEGO DESERT WOODRAT	<i>Neotoma lepida intermedia</i>	Sage Scrub / Chaparral					✓
SAN BERNARDINO FLYING SQUIRREL	<i>Glaucomys sabrinus californicus</i>	Mountains	✓				

COMMON NAME	SCIENTIFIC NAME	HABITAT(S)	GENERAL LOCATIONS	NOT PRESENT	NOT LIKELY PRESENT	POSSIBLY PRESENT	LIKELY PRESENT	CONFIRMED PRESENT
beautiful hulsea	<i>Hulsea vestita</i> var. <i>callicarpa</i>	Mid-level mountains	SJMTS	✓				
Brand's phacelia	<i>Phacelia stellaris</i>	Sandy benches	SARIV		✓			
California beardtongue	<i>Penstemon californicus</i>	Mid-level mountains	SJMTS, DVA, SRP		✓			
California bedstraw	<i>Galium californicum</i> var. <i>primum</i>	Upper elevation chaparral	SJMTS, DVA, San Timoteo			✓		
California black walnut	<i>Juglans californica</i> var. <i>californica</i>	Streams	SRP, Pedley		✓			
California muhly	<i>Muhlenbergia californica</i>	Riparian / seeps	Sage area, Prado area, GAV, TEM		✓			
California Orcutt grass	<i>Orcuttia californica</i>	Vernal pools	SALT, SRP, SKUNK	✓				
chickweed oxytheca	<i>Oxytheca caryophylloides</i>	Mountains	SJMTS		✓			
Cleveland's bush monkeyflower	<i>Mimulus clevelandii</i>	Upper elevation chaparral	SAMTS			✓		
cliff cinquefoil	<i>Potentilla rimicola</i>	High elevation rocks	SJMTS		✓			
Coulter's goldfields	<i>Lasthenia glabrata</i> var. <i>coulteri</i>	Alkali vernal plains	SJVAL, Perris Valley, Nichols Rd.	✓				
Coulter's matilija poppy	<i>Romneya coulteri</i>	Dry washes and canyons	GAV, TEM			✓		
Davidson's saltscale	<i>Atriplex sereana</i> var. <i>davidsonii</i>	Alkali vernal plains and pools	SJVAL, Perris Valley, Nichols Rd.	✓				
Englemann oak	<i>Quercus engelmannii</i>	Mesic fans and slopes	SRP, SAMTS, GAV		✓			
Fish's mildwort	<i>Polygala cornuta</i> var. <i>fishiae</i>	Oak riparian woodlands	SRP, SAMTS, Temecula area		✓			
graceful tarplant	<i>Holocarpa virgata</i> <i>elongata</i>	Level grasslands and shrublands	SRP		✓			
Hall's monardella	<i>Monardella macrantha</i> var. <i>hallii</i>	Mountain foothills, dry slopes, ridges	SAMTS, Pine Cove aera			✓		
Hammitt's clay-cress	<i>Sibaropsis hammittii</i>	Clay grasslands	SAMTS		✓			
heart-leaved pitcher plant	<i>Lepechinia cardiophylla</i>	Forests	SAMTS	✓				
intermediate mariposa lily	<i>Calochortus weedii</i> var. <i>intermedius</i>	Dry rocky slopes in SS / CHAP, burned areas	SAMTS, DVA, VAIL			✓		
Jaegar's milk-vetch	<i>Astragalus pachypus</i> var. <i>jaegeri</i>	Dry areas	VAIL, Agunaga area, Protrero area			✓		
Johnston's rock cress	<i>Arabis johnstonii</i>	Upper elevation chaparral, forests	SJMTS		✓			
lemon lily	<i>Lilium parryi</i>	Mountain wet places	SJMTS		✓			
little mousetail	<i>Myosaurus minimum</i> <i>apus</i>	Vernal pools, alkali sinks	SALT, SRP, GAV, MARB		✓			
long-spined spine flower	<i>Chorizanthe polygonoides</i> var. <i>longispina</i>	Rocky clay soils	GAV, TEM, SAMTS, SRP		✓			
many-stemmed dudleya	<i>Dudleya multicaulis</i>	Rocky clay soils, outcrops	GAV, TEM			✓		
Mojave tarplant	<i>Deinandra</i> [<i>Hemizonia</i>] <i>mohavensis</i>	Clay or silty streams	SJMTS and foothills		✓			
mud nama	<i>Nama stenocarpum</i>	Marshes	SJRIV near Gilman	✓				
Munz's mariposa lily	<i>Calochortus palmeri</i> var. <i>munzii</i>	Mountains, chaparral	SJMTS			✓		
Munz's onion	<i>Allium munzii</i>	Clay soils in SS / CHAP / Grasslands	GAV, TEM, SAMTS, SKUNK, SKIN			✓		
Nevin'a barberry	<i>Berberis nevinii</i>	Course soils in chaparral	Varies			✓		
ocellated Humboldt lily	<i>Lilium humboldtii</i> <i>ocellatum</i>	Mountain riparian	SAMTS, Palomar Mts.		✓			
Orcutt's brodiaea	<i>Brodiaea orcuttii</i>	Mesic grasslands and pools	SRP		✓			
Palmer's grapplehook	<i>Harpagonella palmeri</i>	Clay soils in SS / CHAP / Grasslands	varies			✓		
Palomar monkeyflower	<i>Mimulus diffusus</i>	Sandy soils in upper elev. CHAP, forests	SAMTS, SJMTS			✓		
Parish's brittlescale	<i>Atriplex parishii</i>	Alkaine soils	SALT, lower SJRIV		✓			
Parish's meadowfoam	<i>Limnanthes gracilis</i> var. <i>parishii</i>	Ephemeral wetlands	SRP	✓				

APPENDIX B.
Target Plant Species

Parry's spine flower	<i>Chorizanthe parryi</i> var. <i>parryi</i>	Alluvial scrub	Varies		✓		
Payson'r jewelflower	<i>Caulanthus simulans</i>	Pinyon-Juniper, chaparral, sage scrub	Agunaga area			✓	
peninsular spine flower	<i>Chorizanthe leptotheca</i>	Dry open areas	Varies			✓	
Plummer's mariposa lily	<i>Calochortus plummerae</i>	Varies	SJMTS, Jurupa Hills			✓	
prostrate navarretia	<i>Navarretia prostrata</i>	Sage scrub, vernal pools, grasslands	SRP			✓	
prostrate spine flower	<i>Chorizanthe procumbrens</i>	Sandy openings in CHAP / SS	SAMTS			✓	
Rainbow manzanita	<i>Arctostaphylos rainbowensis</i>	Iron rich soils in chaparral	SRP, GAV, TEM, Wildomar area			✓	
round-leaved filaree	<i>Erodium macrophyllum</i>	Grasslands	GAV, DVA, TEM		✓		
San Diego ambrosia	<i>Ambrosia pumila</i>	Grasslands	Alberhill, Lake Street, SKUNK		✓		
San Diego button-celery	<i>Eryngium aristulatum</i> var. <i>parishii</i>	Vernal pools	SRP	✓			
San Jacinto Mountains bedstraw	<i>Galium angustifolium jacinticum</i>	Forests	SJMTS	✓			
San Jacinto Valley crownscale	<i>Atriplex coronatum</i> var. <i>notatior</i>	Floodplains	MYSTIC, SALT	✓			
San Miguel savory	<i>Satureja chandleri</i>	Varies	SRP			✓	
Santa Ana River woollystar	<i>Eriastrum densifolium sanctorum</i>	Alluvial scrub (immature)	SARIV		✓		
shaggy-haired alumroot	<i>Heuchera hirsutissima</i>	Forests	SJMTS	✓			
slender-horned spine flower	<i>Dodecahema leptoceras</i>	Alluvial scrub (mature)	Indian Creek, VAIL area		✓		
small-flowered microserius	<i>Microserius douglasii</i> var. <i>platycarpa</i>	Clay foothills and grasslands	SRP, Bachelor Mt. area		✓		
small-flowered morning-glory	<i>Convolvulus simulans</i>	Clay and serpentine soils in grasslands	Varies		✓		
smooth tarplant	<i>Centromadia pungens</i> (<i>Hemizonia pungens laevis</i>)	Varies	Varies			✓	
spreading navarretia	<i>Navarretia fossalis</i>	Vernal pools and ditches	SALT, SJRIV	✓			
sticky-leaved dudleya	<i>Dudleya viscida</i>	Rocky canyon slopes	SAMTS		✓		
thread-leaved brodiaea	<i>Brodiaea filifolia</i>	Alkali pools, mesic grasslands	SJRIV, SALT, SRP	✓			
Vail Lake ceanothus	<i>Ceanothus ophiocchilus</i>	Dry ridgetops in chaparral	VAIL area			✓	
vernal barley	<i>Hordeum intercedens</i>	Vernal pools and mesic grasslands	SALT, SJRIV	✓			
Wright's trichocoronis	<i>Trichocoronis wrightii</i> var. <i>wrightii</i>	Alkali vernal pools and flats	SJRIV, MYSTIC	✓			
Yucaipa onion	<i>Allium marvinii</i>	Clay soils in chaparral	Beaumont area			✓	



RAILROAD CANYON RD

I-15
I-15

GRAPE ST

LAKEVIEW DR

SUNRISE DR

TERRACE PL

CANYON DR

ROMONA PL

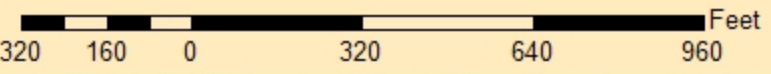
**APPENDIX C - SITE MAP
ELSINORE LAKEVIEW ESTATES
RC21000029**



PROPERTY BOUNDARY



POTENTIAL GATE/FENCE SITE



ATTACHMENT D.



Northern trail looking west.



Northern trail looking north.

ATTACHMENT D.



Northern trail looking south.



Main road into property looking east.