



**Regional
Conservation
Authority**
Western Riverside County

Multiple Species Habitat Conservation Plan Trails

Preserving our open space heritage • Protecting our economy • Building our future



Trails/Public Access in the MSHCP Conservation Area

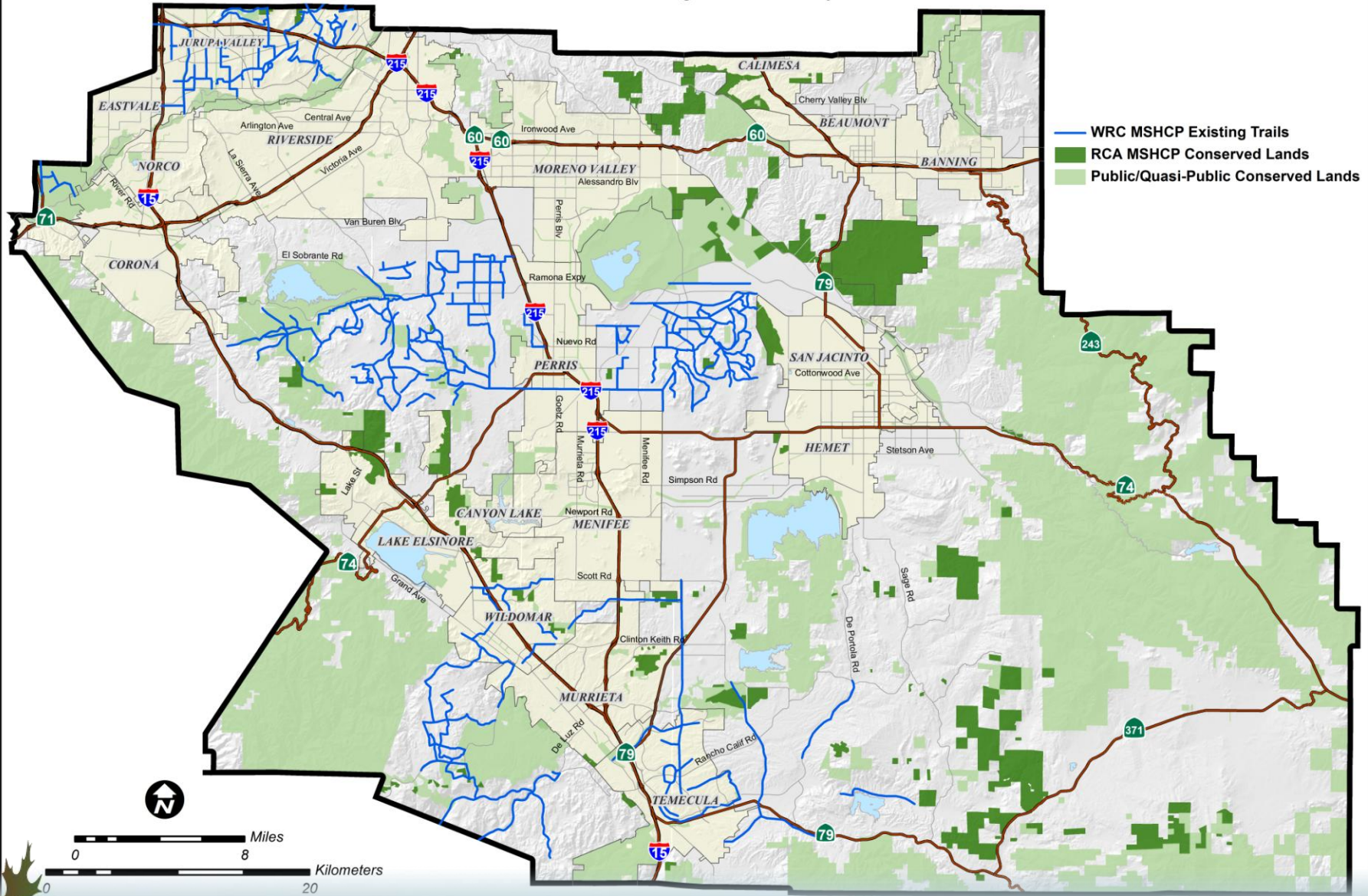
Although the main goal of the MSHCP Conservation Area (Public/Quasi-Public and Additional Reserve Lands) is to protect biological resources, another primary objective is to provide recreational and educational opportunities within the MSHCP.

The covered public access uses within the MSHCP Conservation Area will be comprised of trails, facilities, and passive recreational activities.

The primary public access component within the MSHCP Conservation Area will be trails. There are two types of trails that are expected within the MSHCP Conservation Area.

- Existing community trails, which are primarily used by equestrian users. No impacts associated with existing trails are covered and no improvements are expected.

WRC MSHCP Existing Community Trails



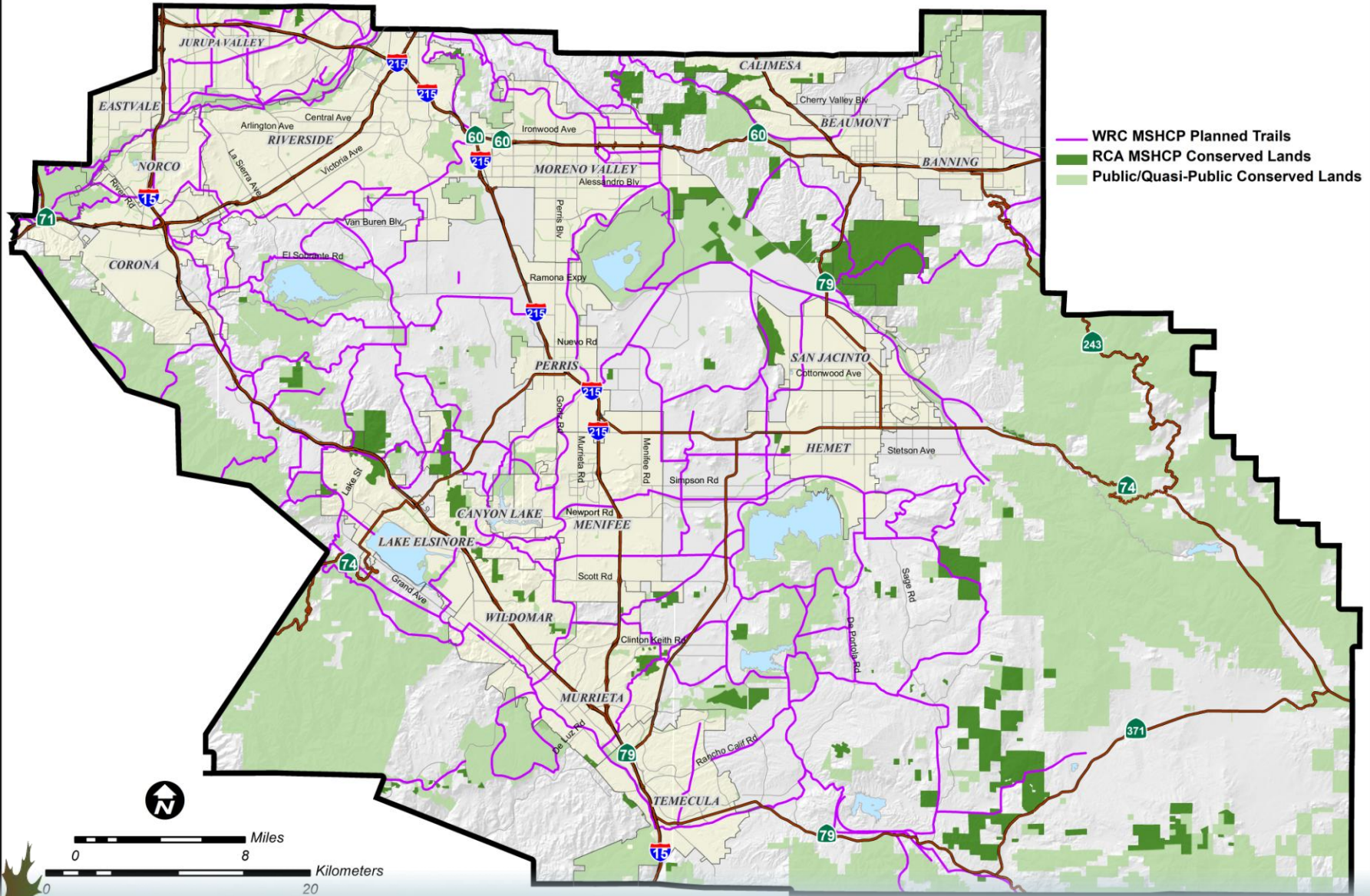
Trails/Public Access in the WR MSHCP Conservation Area

The second type of trail is existing adopted regional trails and future proposed regional trails. Covered uses on these existing and proposed regional trails will include hiking, mountain biking, and equestrian use.

In addition to these trails, three other types of public access facilities will be located in the MSHCP Conservation Area. This includes fourteen trailheads, five interpretive centers, and four maintenance facilities.

Impacts for covered Trails and Facilities	Range of Acres
Regional Trails	810-910
Interpretive Centers	95-120
Trailheads	60-80
Maintenance Facilities	35-45
Total Acres of Authorized Take	1000-1155

WRC MSHCP Planned Trails



Trails/Public Access in the WR MSHCP Conservation Area

Guidelines for the Siting and Design of Trails and Facilities (excerpts)

- Trails and facilities will be sited and designed to be compatible with resource protection and in a manner that minimizes impacts to sensitive resources and Habitat types covered by the MSHCP. All decisions relating to public access will be made in a manner that is most protective of biological resources.
- Trails and facilities will be located in the least sensitive areas of the MSHCP Conservation Area so that they avoid Habitat occupied by species covered by the MSHCP.
- New trails and facilities will be accessible from existing and planned public roads.
- Whenever possible, trail alignments in the MSHCP Conservation Area will use existing dirt roads.

No specific funding is provided for trail/trail facility construction or maintenance