

**INITIAL MANAGEMENT EVALUATION REPORT  
(IMER)**

**For**

**BAEZ PROPERTY**



**Prepared by  
Natural Resources Management Section  
Riverside County Park and Open-Space District**

**April, 2009**

**Riverside County  
Multi-Species Habitat Conservation Plan  
Initial Management Evaluation Report  
Habitat Management Unit: Cactus Valley**

RESERVE NAME: **CAC 1**  
ACQUISITION NAME: BAEZ  
PROJECT ID NUMBER: RC22000013

---

**I. SITE PHYSICAL DESCRIPTION**

**1.A. Site Physical Location & Access:**

The Baez site is located east of Fox Sparrow Road, south of Bit Drive, north of Barranca Road and west of Black Mountain Road. Access to the site can be obtained directly through Black Mountain Road which stems from Bit Drive. Access throughout the property must be done by foot. The site is composed of one parcel totaling 85.34-acres. The approximate center of the site is located at:

State Plane Coordinates: 6335071E, 2174784N (NAD-83, feet)

UTM Coordinates: 500592E, 3721273N (NAD-27, meters)

Township / Range / Section: T6S, R1W, S21, Hemet Quad

**1.B. APNs & Acreage:**

<b>APN</b>	<b>ACRES</b>
470-370-018	20.72
<b>TOTAL</b>	<b>20.72</b>

**1.C. Topography:**

The majority of the property is comprised of gently to steeply rolling hillside with a flatter area near the western half of the property. A relatively large hill and ridgeline is located in the southeastern section of the site.

**1.D. Surrounding Land Use:**

The site is surrounded by low-density rural housing to the east, with many of the surrounding residences participate in equestrian and/or Off-Highway Vehicle (OHV) activities. The property to the northwest, west and southwest of the Baez

site is the Southwestern Riverside County Multi-Species Reserve, which is bordered by Diamond Valley Lake to the north and Lake Skinner to the south.

## **2. BIOLOGICAL ASSESSMENT**

### **2.A. Plant Communities:**

The Baez property is composed of a mixture of annual grassland and coastal sage scrub plant communities. Plant species associated with the current plant community include mustard (*Hirschfeldia incana*), oat (*Avena spp.*), California buckwheat (*Erigonum fasciculatum*), California broom/deer weed (*Lotus scoparius*) and coast live oak (*Quercus agrifolia*).

### **2.B. Likely Animal Species:**

Given the remoteness of the site, the likelihood of finding species associated with the annual grassland/coastal sage scrub habitat is likely. These species could include bobcat (*Lynx rufus*), coyote (*Canis latrans*), long-tailed weasel (*Mustela frenata*), spotted skunk (*Spilogale putorius*), brush rabbit (*Sylvilagus bachmani*), southern Pacific rattlesnake (*Crotalus viridis*), California whipsnake (*Masticophis lateralis*), Baja California lyresnake (*Trimorphodon biscutatus lyrophanes*), coachwhip (*Masticophis flagellum*), rosy boa (*Lichanura trivirgata*), southern sagebrush lizard (*Sceloporous graciosus vandenburgianus*), side-blotched lizard (*Uta stansburiana*), San Diego horned lizard (*Phrynosoma coronatum blainvelleriei*), red-tailed hawk (*Buteo jamaicensis*), California thrasher (*Toxostoma redivivum*), California towhee (*Pipilo fuscus*), wrentit (*Chamaea fasciata*), California quail (*Callipepla californica*), and mourning dove (*Zenaida macroura*). See Appendix A for a quantitative list of target animal species.

### **2.C. Other Habitat or Wildlife Features:**

None.

### **2.D. Target Species:**

Please see Appendix A for a qualitative checklist of MSHCP target animal species, and Appendix B for plant species.

## **3. IMPACTS AND CURRENT CONDITIONS**

### **3.A. Current Uses:**

Currently, the property is not being used.

### **3.B. Fencing & Access Controls:**

Previous access the site use to be gained from a dirt road that stems from Black Mountain Road. Currently there is a temporary field gate, installed by County Parks, that limits vehicle access into the property. The gate was installed to allow the dirt road to establish vegetation and return to a natural state. Access within the property must be done afoot.

**3.C. Off-Road Vehicle (OHV) Use / Damage:**

No OHV use is found to occur within the Baez property, but does occur within the surrounding area.

**3.D. Illegal Dumping:**

Although illegal dumping was not observed to occur within the property boundary it does occur in the area.

**3.E. Target Shooting & Hunting:**

The site is currently not being used for target shooting or hunting.

**3.F. Weed Abatement:**

Weed abatement may need to be seasonally completed along the eastern border of the property, which borders Black Mountain Road. The other borders will not require weed abatement activities. Weed abatement, if needed, should be completed using hand tools or string trimmers.

**3.G. Other Recreational Opportunities and Constraints:**

With proper management and funding, opportunities could exist in the future for hiking and nature study.

**3.H. Special Conditions of Purchase:**

None Reported.

**4. RESTORATION OPPORTUNITIES**

**4.A. Target Species:**

Restoration of the sage scrub communities can best be accomplished by actively removing the non-native grasses and allowing the scrub species to naturally re-establish. This process will be difficult given the amount of non-native grass present on-site and may best be addressed by utilizing prescribed fire burns or other manipulative approaches.

#### **4.B. Multi-Species Aspects:**

The multiple species importance of this site primarily lies in it serving as open-space foraging habitat for a number of species found in the area. Both the coastal sage-scrub habitat and non-native grassland potentially may serve as habitat for more than one MSHCP target species. Please see Appendix A for a qualitative checklist of MSHCP target animal species, and Appendix B for plant species.

### **5. RERSERVE DESIGN AND CONNECTIVITY**

#### **5.A. Boundary, Edge and Community Location:**

Due to its fairly large size, proximity to nearby conserved lands and large open area, the site supports a low degree of edge. The location of the site will help establish designated open-space lands in the area, which will help fulfill the goal of the MSHCP.

#### **5.B. Connectivity:**

The Baez property represents a key “stepping stone” parcel in the establishment of open-space land in an area that may be targeted for development in the future. The property is adjacent to Existing Core J (Southwestern Riverside County Multi-Species Reserve), and may serve as a key parcel in establishing Proposed Linkage 14.

#### **5.C. Nearby Existing Reserves:**

The Greer, Lake Skinner Investors, Betts and Goodhart properties are all located within a ±5.0 mile radius. The Baez property borders the Southwestern Riverside County Multi-Species Reserve (MSR) to the south and the west.

#### **5.D. Priority for Future Purchases:**

Priority should be given to acquire the parcels that exist between the Baez property and Proposed Core 4 to the east due to the high probability that the open-space land will be replaced with irreversible development. The acquisition of these critical parcels would help with the continuity of open-space within the immediate area, which hopefully will lead to further acquisitions that may connect the properties to complete MSHCP Proposed Linkage 14.

### **6. INTERIM MANAGEMENT**

#### **6.A. Public Issues:**

No public issues are foreseen concerning this site.

**6.B. Biological Issues:**

Currently there are a few biological issues. The majority of the issues deal with the removal of non-native invasive plant species. Future concerns may require species composition surveys to better understand the existing biology of the sites. The results of the surveys will provide a better understanding of how to correctly manage the property by being as species specific as possible.

**6.C. Recommended Interim Management Scenario:**

- 1) Maintain fencing to inhibit access of OHV.
- 2) Post low-key signs that identify County ownership and on-site restrictions.
- 3) Maintain signs that surround the site.
- 4) Site visits by District rangers and maintenance crews to establish rapport with the local residences and provide a presence to deter potential would-be trespassers.

**7. MAPS – Appendix C.**

**8. SITE PHOTOGRAPHS – Appendix D.**

COMMON NAME	SCIENTIFIC NAME	HABITAT	NOT PRESENT	NOT LIKELY PRESENT	POSSIBLY PRESENT	LIKELY PRESENT	CONFIRMED PRESENT
<b>INVERTEBRATES</b>							
RIVERSIDE FAIRY SHRIMP	<i>Streptocephalus woottoni</i>	Vernal Pool	✓				
SANTA ROSA PLATEAU FAIRY SHRIMP	<i>Linderiella santarosae</i>	Vernal Pool	✓				
VERNAL POOL FAIRY SHRIMP	<i>Branchinecta lynchi</i>	Vernal Pool	✓				
<b>INSECTS</b>							
QUINO CHECKERSPOT BUTTERFLY	<i>Euphydryas editha quino</i>	Sage Scrub			✓		
DELHI SANDS FLOWER-LOVING FLY	<i>Rhaphiomidas terminus abdominalis</i>	Delhi Sands	✓				
<b>FISH</b>							
ARROYO CHUB	<i>Gila orcuttii</i>	Aquatic	✓				
SANTA ANA SUCKER	<i>Catostomus santaanae</i>	Aquatic	✓				
<b>AMPHIBIANS</b>							
COAST RANGE NEWT	<i>Taricha torosa tarosa</i>	Riparian / Intermittant Streams	✓				
ARROYO TOAD	<i>Bufo californicus</i>	Riparian / Well-watered Streams	✓				
WESTERN SPADEFOOT TOAD	<i>Scaphiopus hammondi</i>	Temp. Pools / Surrounding Uplands	✓				
CALIFORNIA RED-LEGGED FROG	<i>Rana aurora draytonii</i>	Permanent Streams and Rivers	✓				
MOUNTAIN YELLOW-LEGGED FROG	<i>Rana mucosa</i>	Mountain Streams / Rivers / Lakes	✓				
<b>REPTILES</b>							
WESTERN POND TURTLE	<i>Clemmys marmorata pallida</i>	Aquatic	✓				
SAN DIEGO COAST HORNED LIZARD	<i>Phrynosoma coronatum blainvillii</i>	Sage Scrub / Grasslands			✓		
SOUTHERN SAGEBRUSH LIZARD	<i>Sceloporus graciosus vandenburgianus</i>				✓		
GRANITE SPINY LIZARD	<i>Sceloporus orcuttii</i>	Sage Scrub with Rocks		✓			
GRANITE NIGHT LIZARD	<i>Xantusia henshawi henshawi</i>	Rocky sage scrub & chaparral			✓		
ORANGE-THROATED WHIPTAIL	<i>Cnemidophorus hyperythrus beldingii</i>	Sage Scrub			✓		
SAN DIEGO BANDED GECKO	<i>Coleonyx variegatus abbottii</i>	Sage Scrub / Chaparral			✓		
SAN BERNARDINO MOUNTAIN KINGSSNAKE	<i>Lampropeltis zonata parviruba</i>	Upper Elev. Chaparral & Mountains		✓			
SAN DIEGO MOUNTAIN KINGSSNAKE	<i>Lampropeltis zonata pulchra</i>	Upper Elev. Chaparral & Mountains		✓			
SOUTHERN RUBBER BOA	<i>Charina bottae umbratica</i>	Mountains	✓				
NORTHERN RED DIAMOND RATTLESNAKE	<i>Crotalus ruber ruber</i>	Sage Scrub / Chaparral			✓		
<b>BIRDS</b>							
DOUBLE-CRESTED CORMORANT	<i>Phalacrocorax auritus</i>	Aquatic	✓				
AMERICAN BITTERN	<i>Botaurus lentiginosus</i>	Marsh	✓				
GREAT BLUE HERON	<i>Ardea herodias</i>	Waterways & Surrounding Areas	✓				
BLACK-CROWNED NIGHT HERON	<i>Nycticorax nycticorax</i>	Waterways & Surrounding Areas	✓				
WHITE-FACED IBIS	<i>Plegadis chihi</i>	Waterways & Surrounding Areas	✓				
MOUNTAIN PLOVER	<i>Charadrius montanus</i>	Waterways & Surrounding Areas	✓				
TURKEY VULTURE	<i>Carthartes aura</i>	Cosmopolitan				✓	
GOLDEN EAGLE	<i>Aquila chrysaetos</i>	Cosmopolitan			✓		
BALD EAGLE	<i>Haliaeetus leucocephalus</i>	Lakes	✓				
WHITE-TAILED KITE	<i>Elanus leucurus</i>	Brushy Grassland			✓		
NORTHERN HARRIER	<i>Circus cyaneus</i>	Brushy Grassland			✓		
SHARP-SHINNED HAWK	<i>Accipiter striatus</i>	Woodlands & Surrounding Areas		✓			
COOPER'S HAWK	<i>Accipiter cooperii</i>	Woodlands & Surrounding Areas		✓			
NORTHERN GOSHAWK	<i>Accipiter gentilis</i>	Mountains	✓				
SWAINSON'S HAWK	<i>Buteo swainsoni</i>	Open Country		✓			
FERRUGINOUS HAWK	<i>Buteo regalis</i>	Open Country		✓			
OSPREY	<i>Pandion haliaetus</i>	Lakes	✓				
MERLIN	<i>Falco columbarius</i>	Open Woods & Surrounding Areas	✓				
PRAIRIE FALCON	<i>Falco mexicanus</i>	Open Country		✓			
PEREGRINE FALCON	<i>Falco peregrinus</i>	Open Country Near Wetlands		✓			
MOUNTAIN QUAIL	<i>Oreortyx pictus</i>	Mountains	✓				
WESTERN YELLOW-BILLED CUCKOO	<i>Coccyzus americanus occidentalis</i>	Riparian	✓				
CALIFORNIA SPOTTED OWL	<i>Stryx occidentalis occidentalis</i>	Mountains	✓				
BURROWING OWL	<i>Athene cunicularia hypugaea</i>	Open Country		✓			
BLACK SWIFT	<i>Cypseloides niger</i>	Cliffs Near Water	✓				
WILLIAMSON'S SAPSUCKER	<i>Sphyrapicus thyroideus</i>	Mountains	✓				

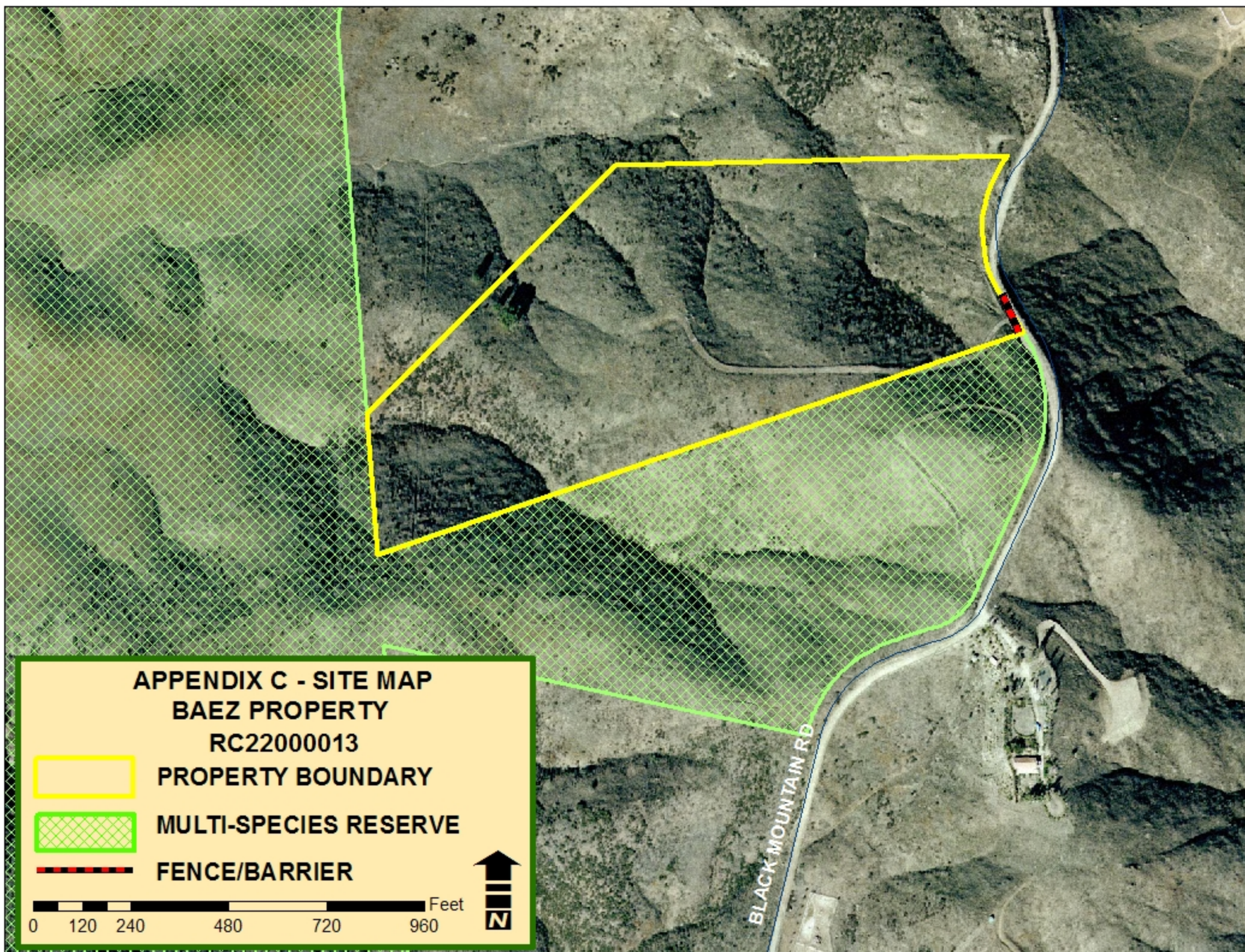
DOWNY WOODPECKER	<i>Picoides pubescens</i>	Areas With Trees	✓				
SOUTHWESTERN WILLOW FLYCATCHER	<i>Empidonax traillie extimus</i>	Riparian	✓				
CALIFORNIA HORNED LARK	<i>Eremophila alpestris acta</i>	Open Grasslands & Sage Scrub			✓		
TREE SWALLOW	<i>Tachycineta bicolor</i>	Wooded Areas Near Water	✓				
PURPLE MARTIN	<i>Progne subis</i>	Open Country		✓			
CACTUS WREN	<i>Campylorhynchus brunneicapillus</i>	Sage Scrub With Cactus		✓			
COASTAL CALIFORNIA GNATCATCHER	<i>Poliopitila californica californica</i>	Sage Scrub			✓		
LOGGERHEAD SHRIKE	<i>Lanius lucovicianus</i>	Cosmopolitan			✓		
LEAST BELL'S VIREO	<i>Vireo bellii pusillus</i>	Extensive Riparian	✓				
NASHVILLE WARBLER	<i>Vermivora ruficapilla</i>	Riparian	✓				
YELLOW WARBLER	<i>Dendroica petechia brewsteri</i>	Riparian	✓				
McGILLIVRAY'S WARBLER	<i>Oporornis tolmiei</i>	Riparian	✓				
WILSON'S WARBLER	<i>Wilsonia pusilla</i>	Riparian	✓				
YELLOW-BREASTED CHAT	<i>Icteria virens</i>	Riparian	✓				
GRASSHOPPER SPARROW	<i>Ammodramus savannarum</i>	Grasslands			✓		
BELL'S SAGE SPARROW	<i>Amphispiza bellii bellii</i>	Chaparral		✓			
SO. CAL. RUFOUS-CROWNED SPARROW	<i>Aimophila ruficeps canescens</i>	Sage Scrub / Chaparral Slopes			✓		
LINCOLN'S SPARROW	<i>Melospiza lincolni</i>	Mountain Bogs & Meadows	✓				
TRICOLORED BLACKBIRD	<i>Agelaius tricolor</i>	Marsh	✓				
<b>MAMMALS</b>							
BOBCAT	<i>Lynx rufus</i>	Cosmopolitan			✓		
MOUNTAIN LION	<i>Felis concolor</i>	Remote Mountainous Areas			✓		
LONG-TAILED WEASEL	<i>Mustela frenata</i>	Open Country			✓		
COYOTE	<i>Canis latrans</i>	Cosmopolitan				✓	
BRUSH RABBIT	<i>Sylvilagus bachmani</i>	Chaparral			✓		
SAN DIEGO BLACK-TAILED JACKRABBIT	<i>Lepus californicus bennettii</i>	Open Country			✓		
LOS ANGELES POCKET MOUSE	<i>Perognathus longimembris breviansus</i>	Streambeds & Sandy Areas	✓				
NORTHWESTERN SAN DIEGO POCKET MOUSE	<i>Chaetodipus fallax fallax</i>	Sage Scrub / Chaparral			✓		
AGUNAGA KANGAROO RAT	<i>Dipodomys merriami collinus</i>	Sandy Areas Near Aguanga		✓			
SAN BERNARDINO KANGAROO RAT	<i>Dipodomys merriami parvus</i>	Sandy Areas / San Jacinto River	✓				
DELZURA KANGAROO RAT	<i>Dipodomys simulans</i>	Sage Scrub / Chaparral			✓		
STEPHENS' KANGAROO RAT	<i>Dipodomys stephensi</i>	Open Country			✓		
SAN DIEGO DESERT WOODRAT	<i>Neotoma lepida intermedia</i>	Sage Scrub / Chaparral			✓		
SAN BERNARDINO FLYING SQUIRREL	<i>Glaucomys sabrinus californicus</i>	Mountains	✓				

APPENDIX B.  
Target Plant Species




COMMON NAME	SCIENTIFIC NAME	HABITAT(S)	GENERAL LOCATIONS	NOT	NOT LIKELY	POSSIBLY	LIKELY	CONFIRMED
				PRESENT	PRESENT	PRESENT	PRESENT	PRESENT
beautiful hulsea	<i>Hulsea vestita</i> var. <i>callicarpa</i>	Mid-level mountains	SJMETS	✓				
Brand's phacelia	<i>Phacelia stellaris</i>	Sandy benches	SARIV	✓				
California beardtongue	<i>Penstemon californicus</i>	Mid-level mountains	SJMETS, DVA, SRP		✓			
California bedstraw	<i>Galium californicum</i> var. <i>primum</i>	Upper elevation chaparral	SJMETS, DVA, San Timoteo		✓			
California black walnut	<i>Juglans californica</i> var. <i>californica</i>	Streams	SRP, Pedley	✓				
California muhly	<i>Muhlenbergia californica</i>	Riparian / seeps	Sage area, Prado area, GAV, TEM	✓				
California Orcutt grass	<i>Orcuttia californica</i>	Vernal pools	SALT, SRP, SKUNK	✓				
chickweed oxytheca	<i>Oxytheca caryophylloides</i>	Mountains	SJMETS	✓				
Cleveland's bush monkeyflower	<i>Mimulus clevelandii</i>	Upper elevation chaparral	SAMTS	✓				
cliff cinquefoil	<i>Potentilla rimicola</i>	High elevation rocks	SJMETS	✓				
Coulter's goldfields	<i>Lasthenia glabrata</i> var. <i>coulteri</i>	Alkali vernal plains	SJVAL, Perris Valley, Nichols Rd.	✓				
Coulter's matilija poppy	<i>Romneya coulteri</i>	Dry washes and canyons	GAV, TEM	✓				
Davidson's saltscare	<i>Atriplex sereana</i> var. <i>davidsonii</i>	Alkali vernal plains and pools	SJVAL, Perris Valley, Nichols Rd.	✓				
Englemann oak	<i>Quercus engelmannii</i>	Mesic fans and slopes	SRP, SAMTS, GAV	✓				
Fish's mildwort	<i>Polygala comuta</i> var. <i>fishiae</i>	Oak riparian woodlands	SRP, SAMTS, Temecula area		✓			
graceful tarplant	<i>Holocarpa virgata</i> elongata	Level grasslands and shrublands	SRP			✓		
Hall's monardella	<i>Monardella macrantha</i> var. <i>hallii</i>	Mountain foothills, dry slopes, ridges	SAMTS, Pine Cove aera		✓			
Hammitt's clay-cress	<i>Sibaropsis hammittii</i>	Clay grasslands	SAMTS			✓		
heart-leaved pitcher plant	<i>Lepechinia cardiophylla</i>	Forests	SAMTS	✓				
intermediate mariposa lily	<i>Calochortus weedii</i> var. <i>intermedius</i>	Dry rocky slopes in SS / CHAP, burned areas	SAMTS, DVA, VAIL			✓		
Jaegar's milk-vetch	<i>Astragalus pachypus</i> var. <i>jaegeri</i>	Dry areas	VAIL, Agunaga area, Protero area		✓			
Johnston's rock cress	<i>Arabis johnstonii</i>	Upper elevation chaparral, forests	SJMETS	✓				
lemon lily	<i>Lilium parryi</i>	Mountain wet places	SJMETS	✓				
little mousetail	<i>Myosaurus minimum</i> apus	Vernal pools, alkali sinks	SALT, SRP, GAV, MARB	✓				
long-spined spine flower	<i>Chorizanthe polygonoides</i> var. <i>longispina</i>	Rocky clay soils	GAV, TEM, SAMTS, SRP		✓			
many-stemmed dudleya	<i>Dudleya multicaulis</i>	Rocky clay soils, outcrops	GAV, TEM		✓			
Mojave tarplant	<i>Deinandra</i> [Hemizonia] <i>mohavensis</i>	Clay or silty streams	SJMETS and foothills	✓				
mud nama	<i>Nama stenocarpum</i>	Marshes	SJRIV near Gilman	✓				
Munz's mariposa lily	<i>Calochortus palmeri</i> var. <i>munzii</i>	Mountains, chaparral	SJMETS	✓				
Munz's onion	<i>Allium munzii</i>	Clay soils in SS / CHAP / Grasslands	GAV, TEM, SAMTS, SKUNK, SKIN			✓		
Nevin'a barberry	<i>Berberis nevinii</i>	Course soils in chaparral	Varies		✓			
ocellated Humboldt lily	<i>Lilium humboldtii</i> ocellatum	Mountain riparian	SAMTS, Palomar Mts.	✓				
Orcutt's brodiaea	<i>Brodiaea orcuttii</i>	Mesic grasslands and pools	SRP		✓			
Palmer's grapplinghook	<i>Harpagonella palmeri</i>	Clay soils in SS / CHAP / Grasslands	varies			✓		
Palomar monkeyflower	<i>Mimulus diffusus</i>	Sandy soils in upper elev. CHAP, forests	SAMTS, SJMETS		✓			
Parish's brittlescale	<i>Atriplex parishii</i>	Alkaine soils	SALT, lower SJRIV		✓			
Parish's meadowfoam	<i>Limnanthes gracilis</i> var. <i>parishii</i>	Ephemeral wetlands	SRP	✓				

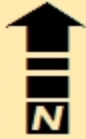
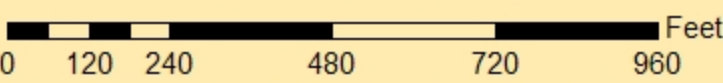
APPENDIX B.  
Target Plant Species

<b>Rainbow manzanita</b>	<i>Arctostaphylos rainbowensis</i>	Iron rich soils in chaparral	SRP, GAV, TEM, Wildomar area		✓			
<b>round-leaved filaree</b>	<i>Erodium macrophyllum</i>	Grasslands	GAV, DVA, TEM		✓			
<b>San Diego ambrosia</b>	<i>Ambrosia pumila</i>	Grasslands	Alberhill, Lake Street, SKUNK		✓			
<b>San Diego button-celery</b>	<i>Eryngium aristulatum</i> var. <i>parishii</i>	Vernal pools	SRP	✓				
<b>San Jacinto Mountains bedstraw</b>	<i>Galium angustifolium jacinticum</i>	Forests	SJMTS	✓				
<b>San Jacinto Valley crownscale</b>	<i>Atriplex coronatum</i> var. <i>notatior</i>	Floodplains	MYSTIC, SALT	✓				
<b>San Miguel savory</b>	<i>Satureja chandleri</i>	Varies	SRP		✓			
<b>Santa Ana River woollystar</b>	<i>Eriastrum densifolium sanctorum</i>	Alluvial scrub (immature)	SARIV		✓			
<b>shaggy-haired alumroot</b>	<i>Heuchera hirsutissima</i>	Forests	SJMTS	✓				
<b>slender-horned spine flower</b>	<i>Dodecahema leptoceras</i>	Alluvial scrub (mature)	Indian Creek, VAIL area	✓				
<b>small-flowered microserius</b>	<i>Microserius douglasii</i> var. <i>platycarpa</i>	Clay foothills and grasslands	SRP, Bachelor Mt. area		✓			
<b>small-flowered morning-glory</b>	<i>Convolvulus simulans</i>	Clay and serpentine soils in grasslands	Varies		✓			
<b>smooth tarplant</b>	<i>Centromadia pungens</i> ( <i>Hemizonia pungens laevis</i> )	Varies	Varies		✓			
<b>spreading navarretia</b>	<i>Navarretia fossalis</i>	Vernal pools and ditches	SALT, SJRIV	✓				
<b>sticky-leaved dudleya</b>	<i>Dudleya viscida</i>	Rocky canyon slopes	SAMTS	✓				
<b>thread-leaved brodiaea</b>	<i>Brodiaea filifolia</i>	Alkali pools, mesic grasslands	SJRIV, SALT, SRP		✓			
<b>Vail Lake ceanothus</b>	<i>Ceanothus ophiochilus</i>	Dry ridgetops in chaparral	VAIL area	✓				
<b>vernal barley</b>	<i>Hordeum intercedens</i>	Vernal pools and mesic grasslands	SALT, SJRIV	✓				
<b>Wright's trichocoronis</b>	<i>Trichocoronis wrightii</i> var. <i>wrightii</i>	Alkali vernal pools and flats	SJRIV, MYSTIC	✓				
<b>Yucaipa onion</b>	<i>Allium marvinii</i>	Clay soils in chaparral	Beaumont area	✓				



**APPENDIX C - SITE MAP  
BAEZ PROPERTY  
RC22000013**

-  **PROPERTY BOUNDARY**
-  **MULTI-SPECIES RESERVE**
-  **FENCE/BARRIER**



## APPENDIX D



Northeast corner looking west, 09-29-06.



Southeast corner looking north, 04-24-08.

**APPENDIX D**



Middle of property looking towards the northeast corner, 09-29-06.



View from dirt road looking north, 04-24-08.